

# Duct Connected (Compact & Flexible) FDUH

**Model No.**  
FDUH22KXE6F  
FDUH28KXE6F  
FDUH36KXE6F



**Drain up kit (option)**  
(600mm)  
**UH-DU-E**

**Filter kit (option)**  
**UH-FL1E**



\*Filter pressure loss:5pa

## Remote control (option)

Wired



**RC-EX3A RC-E5 RCH-E3**

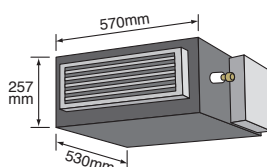
Wireless



**RCN-KIT4-E2**

## Compact and thin size, light weight

Our leading high technology has realized the best solution for air conditioning in hotels with compact and thin size units and high energy efficiency. In addition, weight is only 20kg.

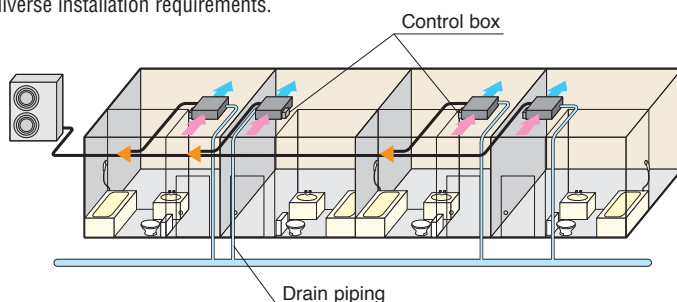


## Quiet operation

The lowest sound level in the industry can ensure comfortable stay and rest in hotels.

## Installation Flexibility

Control box and drain piping can be installed on both side of the unit and air intake to the unit is available from bottom or back side. Our highest technology can satisfy diverse installation requirements.



## Wired remote control



**RCH-E3 (option)**

## Simple remote control

Considering specialized usage in hotel rooms, control buttons are limited only to minimum required functions such as ON/OFF, mode, temperature setting and fan speed. It is really simple and easy to use.

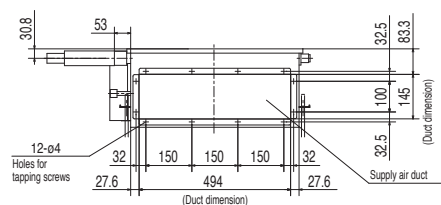
## Specifications

| Item                      | Model               | FDUH22KXE6F                                       | FDUH28KXE6F | FDUH36KXE6F |
|---------------------------|---------------------|---|-------------|-------------|
| Nominal cooling capacity  | kW                  | 2.2   | 2.8         | 3.6         |
| Nominal heating capacity  | kW                  | 2.5   | 3.2         | 4.0         |
| Power source              |                     | 1 Phase 220-240V, 50Hz                            |             |             |
| Power consumption         | Cooling             | 0.05-0.07   |             |             |
|                           | Heating             | 0.05-0.07   |             |             |
| Sound power level         | dB(A)               | 60  |             |             |
| Sound pressure level      | dB(A)               | P-Hi:39 Hi: 33 Me: 30 Lo: 27                      |             |             |
| Exterior dimensions HxWxD | mm                  | 257x570x530                                       |             |             |
| Net weight                | kg                  | 22  |             |             |
| Air flow                  | m <sup>3</sup> /min | P-Hi:85 Hi: 7 Me: 6.5 Lo: 6                       |             |             |
| External static pressure  | Pa                  | 30  |             |             |
| Outside air intake        |                     | Possible from return duct                         |             |             |
| Air filter                |                     | Filter kit:UH-FL1E(option)                        |             |             |
| Remote control(option)    |                     | wired:RC-EX3A, RC-E5, RCH-E3 wireless:RCN-KIT4-E2 |             |             |
| Installation data         | mm(m)               | Liquid line:ø6.35(1/4")                           |             |             |
| Refrigerant piping size   |                     | Gas line:ø9.52(3/8")                              |             |             |
|                           |                     | Gas line:ø12.7(1/2")                              |             |             |

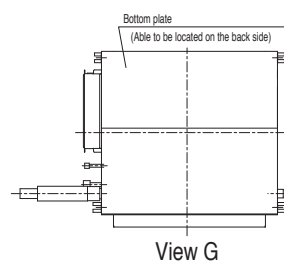
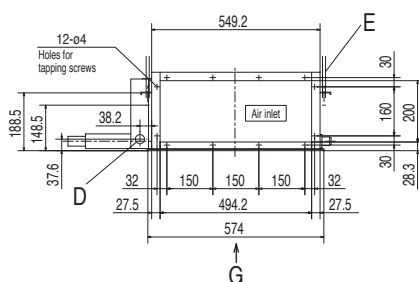
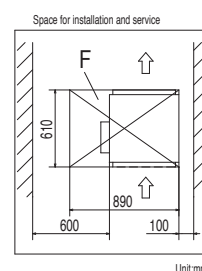
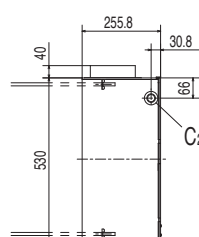
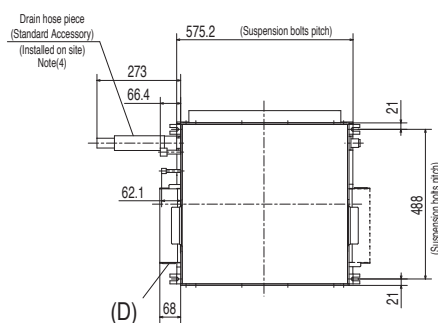
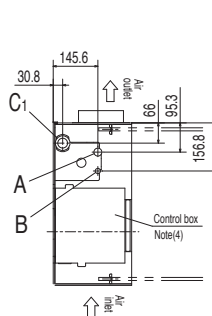
1. The data are measured under the following conditions(ISO-T1). Cooling: Indoor temp. of 27°CDB, 19°CWB, and outdoor temp. of 35°CDB. Heating: Indoor temp. of 20°CDB, and outdoor temp. of 7°CDB, 6°CWB.  
2. Sound pressure level indicates the value in an anechoic chamber. During operation these values are somewhat higher due to ambient conditions.

# Dimensions

All measurements in mm.

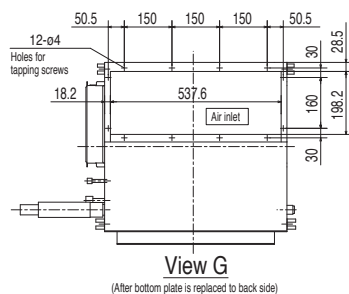


| Symbol                          | Content          |
|---------------------------------|------------------|
|                                 | Model            |
| A                               | Gas piping       |
| B                               | Liquid piping    |
| C <sub>1</sub> , C <sub>2</sub> | Drain piping     |
| D                               | Hole for wiring  |
| E                               | Suspension bolts |
| F                               | Inspection hole  |



View G

In case of Bottom air intake



View G

(After bottom plate is replaced to back side)

## Notes

- (1) The model name label is attached on the fan case inside the air return grille.
- (2) Prepare the connecting socket (VP20) on site. (As for drain piping, it is possible to choose C<sub>1</sub> or C<sub>2</sub>)
- (3) When control box is located on the reverse side, installation space should be modified to new location.
- (4) Control box and Drain hose piece are able to be relocated on the reverse side.

Simple remote control

