

KXZ Heat recovery 3-pipe systems

14, 16, 17, 18, 20, 22, 24HP (40.0kW – 67.0kW)

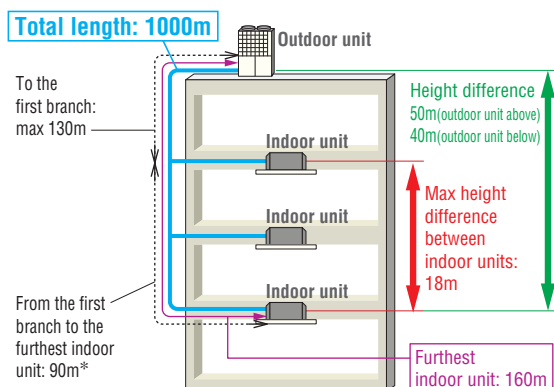
- for simultaneous **heating** and **cooling**

| Model No. | Nominal Cooling Capacity |
|--------------|--------------------------|
| FDC400KXZRE1 | 40.0kW |
| FDC450KXZRE1 | 45.0kW |
| FDC475KXZRE1 | 47.5kW |
| FDC500KXZRE1 | 50.0kW |
| FDC560KXZRE1 | 56.0kW |
| FDC615KXZRE1 | 61.5kW |
| FDC670KXZRE1 | 67.0kW |

- Connect up to 71 indoor units / up to 160% capacity. (400-450KXZRE1:200%)
- High efficiency with COP(in cooling) up to 3.5.
- These units employ DC inverter multiport compressors with concentrated winding motor.
- Industry leading total piping length up to 1000m and a maximum pipe run of 160m.

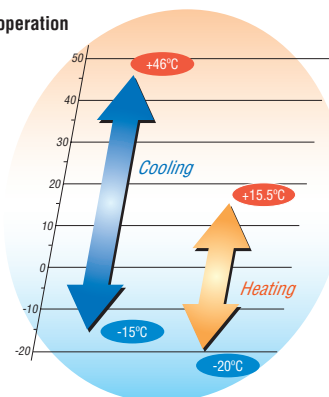


Uniform footprint of all models (from 8HP~24HP) allows continuous side-by-side installation



*The difference between the longest and the shortest indoor unit piping from the first branch must be within 40m.

Range of operation



Specifications

| Item | | | Model | FDC400KXZRE1 | FDC450KXZRE1 | FDC475KXZRE1 | FDC500KXZRE1 | FDC560KXZRE1 | FDC615KXZRE1 | FDC670KXZRE1 |
|------------------------------------|--------------------|-----------------|------------------------|----------------------------|--------------|--------------|--------------|--------------------------|--------------|--------------|
| Nominal horse power | | | | 14HP | 16HP | 17HP | 18HP | 20HP | 22HP | 24HP |
| Power source | | | | 3 Phase 380-415V, 50Hz | | | | | | |
| Starting current | | | A | 5 | | 8 | | | | |
| Max current | | | A | 30.0 | 32.0 | 40.4 | 41.0 | 41.6 | 42.0 | 42.4 |
| Nominal capacity | Cooling | | kW | 40.0 | 45.0 | 47.5 | 50.0 | 56.0 | 61.5 | 67.0 |
| | Heating | | | 40.0 | 45.0 | 47.5 | 50.0 | 56.0 | 61.5 | 63.0 |
| Electrical characteristics | Power consumption | Cooling Heating | kW | 11.55 | 14.45 | 14.82 | 15.19 | 18.31 | 21.35 | 25.51 |
| | | | | 9.76 | 11.38 | 11.58 | 12.7 | 14.33 | 16.15 | 17.47 |
| Exterior dimensions | | HxWxD | mm | 2048x1350x720 | | | | | | |
| Net weight | | | kg | 357 | | 410 | | | | |
| Sound pressure level | | Cooling/Heating | dB(A) | 60/62 | 61/62 | | | 64/65 | 65/66 | |
| Refrigerant | Type / GWP | | | R410A / 2088 | | | | | | |
| | Charge | | kg/TCO ₂ Eq | 11.5 / 24.012 | | | | | | |
| Refrigerant piping size | Liquid line | | mm(in) | ø12.7(1/2") | | | | | | |
| | Suction Gas line | | | ø25.4(1") [ø28.58(1 1/8")] | | | | | | |
| | Discharge Gas line | | | ø22.22(7/8") | | | | ø25.4(1") [ø22.22(7/8")] | | |
| Capacity connection | | | % | 50~200 | | 50~160 | | | | |
| Number of connectable indoor units | | | | 53 | 60 | 50 | 53 | 59 | 65 | 71 |

1. The data are measured under the following conditions (ISO-T1). Cooling: Indoor temp. of 27°CDB, 19°CWB, and outdoor temp. of 35°CDB. Heating: Indoor temp. of 20°CDB, and outdoor temp. of 7°CDB, 6°CWB.

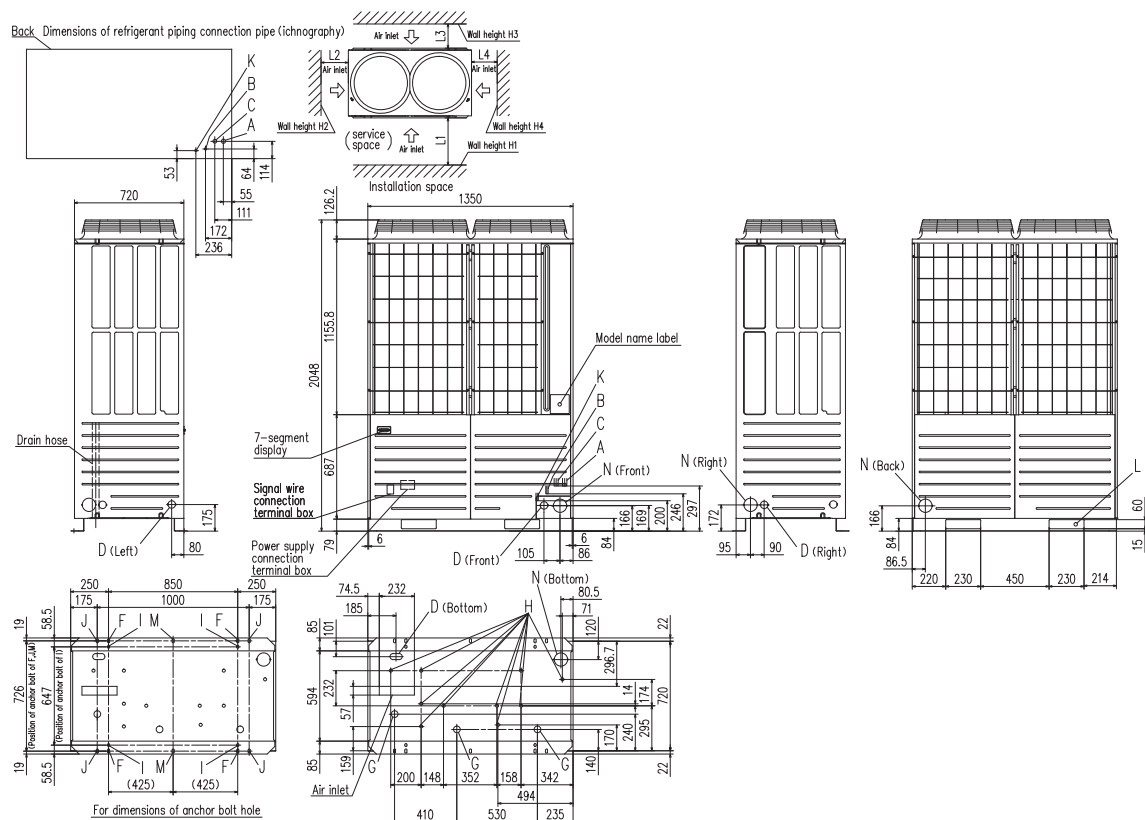
2. Sound pressure level indicates the value in an anechoic chamber. During operation these values are somewhat higher due to ambient conditions.

3. 'tonne(s) of CO₂ equivalent' means a quantity of greenhouse gases- expressed as the product of the weight of the greenhouse gases in metric tonnes and of their global warming potential.

4. [] : Pipe sizes applicable to European installations are shown in parentheses.

Dimensions

All measurements in mm.



| Mark | Content | 400 | 450 | 475 | 500 | 560 | 615 | 670 |
|------|--|---|-----------------|-----|-----|-----|----------------|-----|
| A | Refrigerant suction gas piping connection entrance | ø25.4 (Brazing) | ø28.58(Brazing) | | | | | |
| B | Refrigerant liquid piping connection entrance | ø12.7(Flare) | | | | | | |
| C | Refrigerant discharge gas piping connection entrance | ø22.22(Brazing) | | | | | ø25.4(Brazing) | |
| D | Power supply entry hole | ø50(right · left · front),long hole 40x80(Bottom) | | | | | | |
| F | Anchor bolt hole | M10 x 4 places | | | | | | |
| G | Drain waste water hose hole | ø45 x 3 places | | | | | | |
| H | Drain hole | ø20 x 10 places | | | | | | |
| K | Refrigerant oil equalization piping connection pipe | ø9.52(Flare) | | | | | | |
| L | Carrying in or hole for hanging | 230x60 | | | | | | |
| N | Refrigerant piping exit hole | ø88(or ø100) | | | | | | |

| Installation example | | |
|----------------------|----------|----------|
| Dimensions | 1 | 2 |
| L ₁ | 500 | Open |
| L ₂ | 10(30) | 10(30) |
| L ₃ | 100 | 100 |
| L ₄ | 10(30) | Open |
| H ₁ | 1500 | Open |
| H ₂ | No limit | No limit |
| H ₃ | 1000 | No limit |
| H ₄ | No limit | Open |

() :In case it is the promised installation location that the outdoor unit is used on conditions with the ambient temperature of 43°C or more.