

# Fresh Air DX Assembly

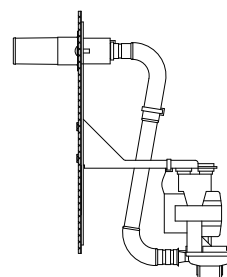
## Model No.

SAF-DX250E6  
SAF-DX350E6  
SAF-DX500E6  
SAF-DX800E6  
SAF-DX1000E6



Drain up kit  
(option, built-in type)  
(600mm)

DXA-DU-E



Remote control  
(option)

Wired



RC-E5



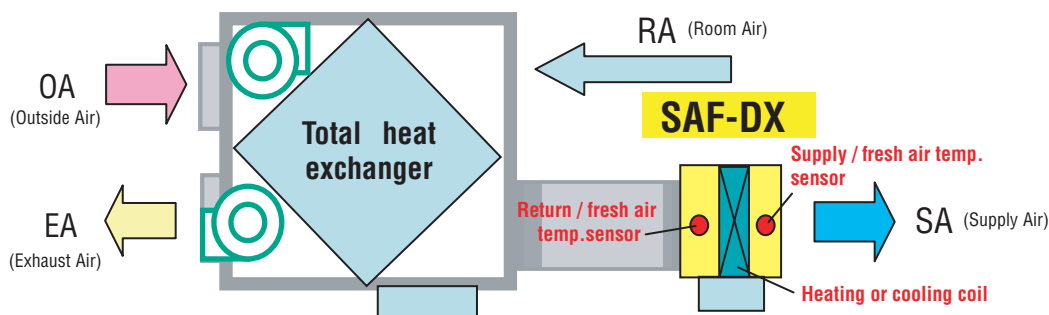
RCH-E3

Wireless



RCN-KIT4-E2

- SAF-DX is a heating or cooling coil incorporating KXZ series controls. It can be used in combination with our SAF series of total heat exchanger.
- Combination of SAF-DX together with other indoor units is possible. The capacity code index of each model is shown below and must be used when making the system selection. Total capacity code index must be within 100% of outdoor unit capacity code index.
- Remote control option is the same as with other indoor units (see above). Connection to all Superlink controls is also possible.
- Optional condensate lift mechanism is also available (600mm height).
- Return air temp. control or supply air temp. control can be selectable.



SAF-DX can provide heating or cooling to the fresh air supplied through a 3rd party air handling unit or total heat exchanger such as our SAF series.

## Specifications

Item	Model	SAF-DX250E6	SAF-DX350E6	SAF-DX500E6	SAF-DX800E6	SAF-DX1000E6
Nominal cooling capacity *1	kW	2.0	2.8	3.6	5.6	6.3
Nominal heating capacity *2	kW	1.8	2.2	2.8	4.5	5.6
Capacity code		22	28	36	56	71
Power source		1 Phase 220-240V, 50Hz				
Power consumption	Cooling	W	7.2-7.2			
	Heating		7.2-7.2			
Running current	Cooling	A	0.05-0.05			
	Heating		0.05-0.05			
Exterior dimensions H x W x D	mm	315 x 452 x 422		315 x 537 x 422	315 x 682 x 422	315 x 822 x 422
Net weight	kg	12.3		13.6	16.1	18.4
Air flow (Standard)	m³/h	250	350	500	800	1000
Internal resistance	Pa	38	66			
Remote control(option)		wired: RC-E5, RCH-E3    wireless: RCN-KIT4-E2				
Installation data Refrigerant piping size	mm(in)	Liquid line:ø6.35(1/4") Gas line:ø9.52(3/8")		Liquid line:ø6.35(1/4") Gas line:ø12.7(1/2")		Liquid line:ø9.52(3/8") Gas line:ø15.88(5/8")

(1) The data are measured at the following conditions.

Item	Return/fresh air temperature		Outdoor air temperature		Standards
Operation	DB	WB	DB	WB	
Cooling *1	27°C	19°C	35°C	24°C	ISO-T1
Heating *2	20°C		7°C	6°C	

(2) This air-conditioner is manufactured and tested in conformity with ISO-T1 "UNITARY AIR-CONDITIONERS".

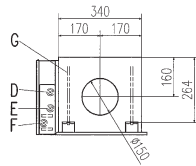
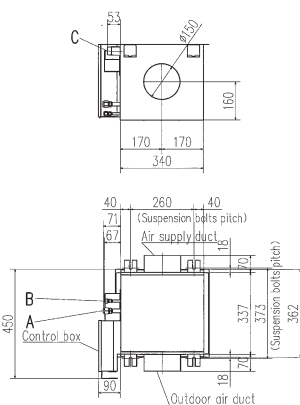
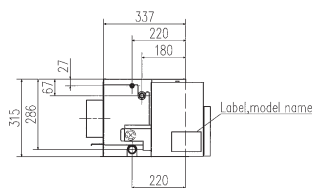
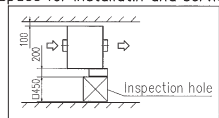
# Dimensions

All measurements in mm.

## SAF-DX250E6,350E6

Symbol	Content
A	Gas piping $\phi 9.52 (3/8")$ (Flare)
B	Liquid piping $\phi 6.35 (1/4")$ (Flare)
C	Drain piping R1
D	Hole for power source line
E	Wiring hole for total enthalpy heat exchanger
F	Hole for communication line
G	Suspension bolts M10

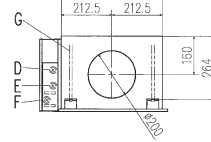
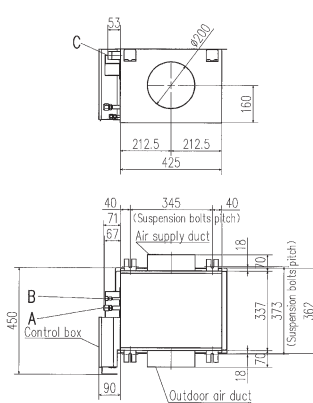
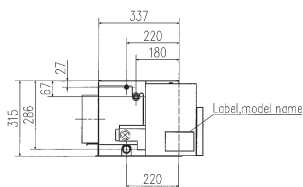
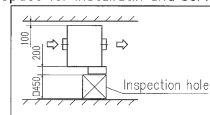
Space for installatin and service



## SAF-DX500E6

Symbol	Content
A	Gas piping $\phi 12.7 (1/2")$ (Flare)
B	Liquid piping $\phi 6.35 (1/4")$ (Flare)
C	Drain piping R1
D	Hole for power source line
E	Wiring hole for total enthalpy heat exchanger
F	Hole for communication line
G	Suspension bolts M10

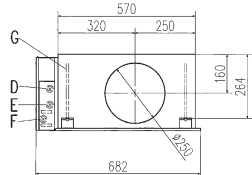
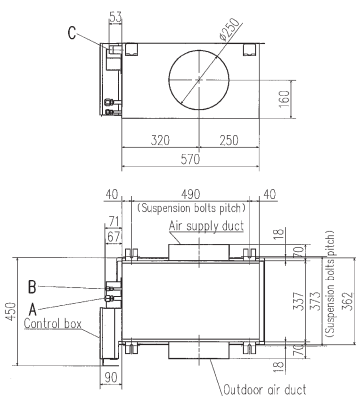
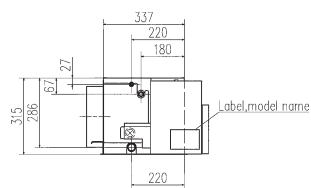
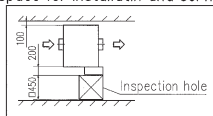
Space for installatin and service



## SAF-DX800E6

Symbol	Content
A	Gas piping $\phi 12.7 (1/2")$ (Flare)
B	Liquid piping $\phi 6.35 (1/4")$ (Flare)
C	Drain piping R1
D	Hole for power source line
E	Wiring hole for total enthalpy heat exchanger
F	Hole for communication line
G	Suspension bolts M10

Space for installatin and service



## SAF-DX1000E6

Symbol	Content
A	Gas piping $\phi 15.88 (5/8")$ (Flare)
B	Liquid piping $\phi 9.52 (3/8")$ (Flare)
C	Drain piping R1
D	Hole for power source line
E	Wiring hole for total enthalpy heat exchanger
F	Hole for communication line
G	Suspension bolts M10

Space for installatin and service

