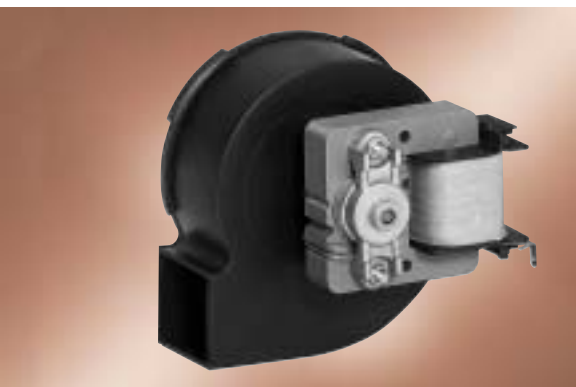


Radial blowers with AC internal-rotor motor

RL 59



- mounting position: shaft horizontal
- insulation class B
- permissible ambient temperature 0 – 60 °C
- housing: plastic PA6 GF
- impeller: forward curved, plastic PA6 GF

ebm-papst • Landshut

Nominal data		characteristic curve	rated voltage	frequency	air flow	max. pressure increase	power input	rated current	speed	mass
motor right*	motor left		V	Hz	m ³ /h	Pa	W	mA	min ⁻¹	kg
RL59/2400-2112	RL59/0024-2112	①	230	50	20	63	6	40	2400	0,30

*) Corresponding to dimensional drawing; Technical data valid at free air flow and rated voltage; bold print = standard type; subject to alterations

Characteristic curves

