

# Tangential blowers

## QLK 45 double housing with EC motor



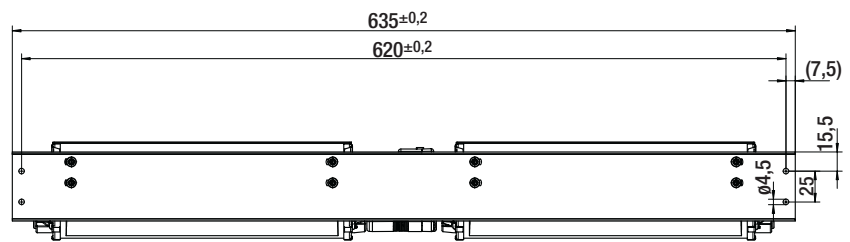
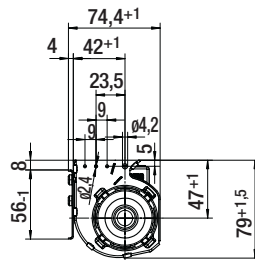
Tangential blowers with electronically commutated EC-motors.

- integrated electronics
- speed setting via 0 - 10 V analogue voltage signal
- speed-adjustable (version) via PWM signal available upon request
- impeller diameter 45 mm
- horizontal or vertical mounting position
- protection class IP20, insulation class F
- permissible ambient temperature 0 – 60 °C

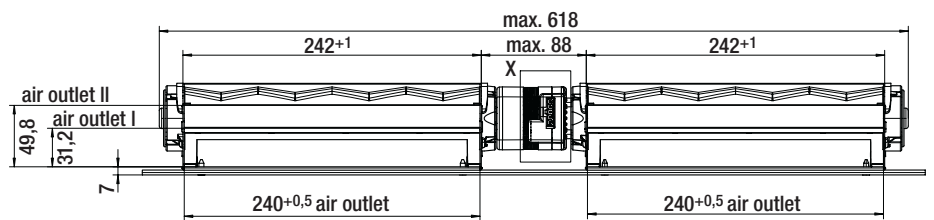
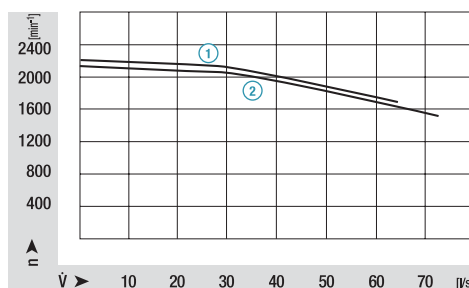
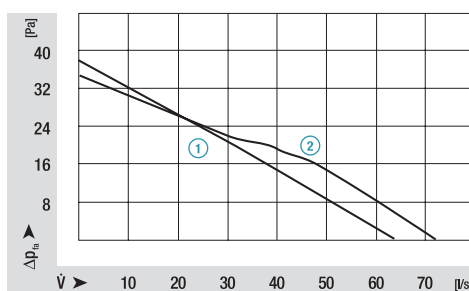
ebm-papst • Landshut

Nominal data	characteristic curve	rated voltage	air flow	max. pressure increase	power input	speed	mass	Dimensions mm									
								type	VDC	m <sup>3</sup> /h	Pa	W	min <sup>-1</sup>	kg	a	b	c
QLK45/2424-2212*	①	24	230	37	8	1650	2,4										
QLK45/3030-2212	②	24	265	34	10	1500	2,6										

\*) Corresponding to dimensional drawing; subject to alterations

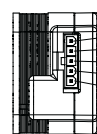


### Characteristic curves



Power supply: 24 DC (10V...26,8V)  
 Hall sensor out: 2 pulses per rotation  
 $U_{H1} = 12V$ ;  $R_1 = 1k\Omega$   
 Input: control voltage: 0...10V  
 input switched to GND: fan off  
 input open: fan off

X



Power supply +  
 Hall Sensor OUT  
 GND  
 PWM Input  
 Power supply - (GND)

suitable for connector housing Mini-Fit, Jr. (Fa. Molex)  
 order number 39-01-4050