

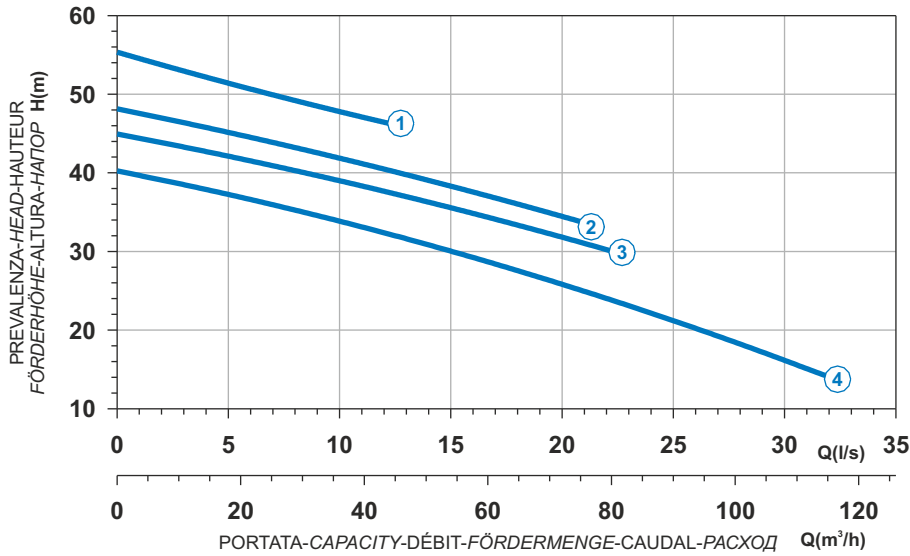

 Ghisa EN-GJL-250
 Fonte EN-GJL-250
 Hierro fundido EN-GJL-250

 Cast Iron EN-GJL-250
 Grauguss EN-GJL-250
 Чугун EN-GJL-250

**Curva caratteristica - Performance curve - Courbe caractéristique
Kennlinie - Curva característica - Характеристическая кривая**

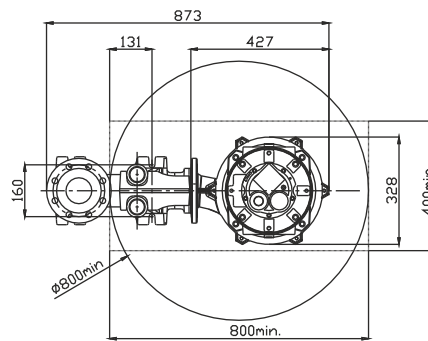
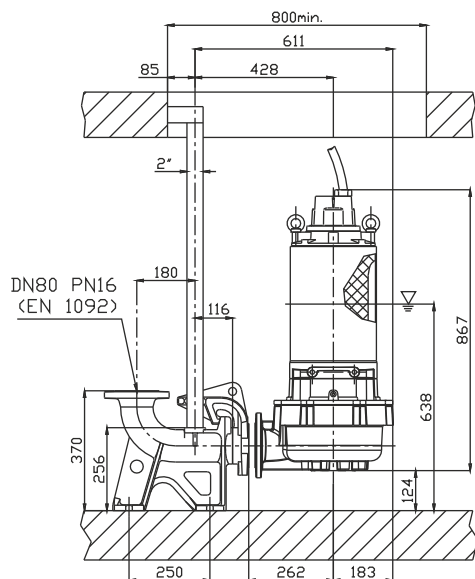


S

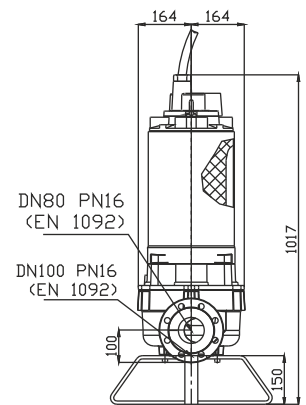
| Curve N° | Code | Type | MOTOR | | | ATEX code  |
|----------|---------|-----------------|---------------------|---------------------|-------------------------|---------------------------------------------------------------------------------------------|
| | | | Rated power P2 (kW) | Rated current I (A) | Starting current Is (A) | |
| 1 | 7000728 | G213R6S1-M35AA2 | 16,6 | 29,8 | 176 | 7008829 |
| 2 | 7001262 | G213R6S2-M35AA2 | 16,6 | 29,8 | 176 | 7009046 |
| 3 | 7001283 | G213R6S3-M35AA2 | 18,2 | 32,6 | 192 | 7009186 |
| 4 | 7001226 | G213R6S4-M35AA2 | 16,6 | 29,8 | 176 | 7009188 |

| | |
|-------------------|-------------------|
| Power supply | 3ph 400/690V 50Hz |
| R.P.M. | 2850 |
| Free passage (mm) | 35 |
| Discharge (mm) | DN 80 |
| Max Weight (Kg) | 191 |

Dimensioni - Dimensions - Dimensions - Abmessungen - Dimensiones - Габариты (mm)



▽ LIVELLO MINIMO DI SOMMERGIBILITÀ
 MINIMUM SUBMERSIBLE LEVEL
 NIVEAU MINIMUM D'IMMERSION
 MINDESTWASSERSTAND
 NIVEL SUMERGIBLE MÍNIMO
 МИНИМАЛЬНАЯ ГЛУБИНА ПОГРУЖЕНИЯ



Versione disponibile con mantello di raffreddamento - Type available also with cooling jacket
 Version disponible avec chemise de refroidissement - Ausführung auch mit Kühlmantel lieferbar
 Disponible también con camisa de refrigeración - Вариант доступен с рубашкой охлаждения