

Slim Duct / Slim Concealed Floor

Models (With drain pump)

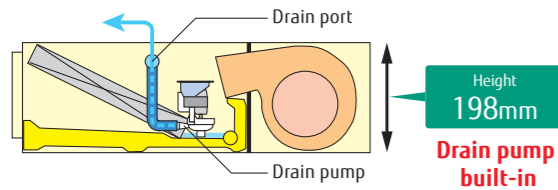
- ARXD04GALH
- ARXD007GLEH
- ARXD009GLEH
- ARXD012GLEH
- ARXD014GLEH
- ARXD018GLEH
- ARXD024GLEH



Feature

Slim design

With a slim indoor design, this indoor can be installed in narrow ceiling spaces.



Selectable with a wide range of static pressure

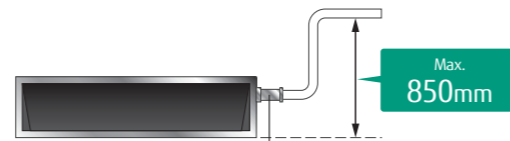
By using DC fan motor, it is possible to change of static pressure range 0 to 90Pa. The change of static pressure range is possible by remote controller.



Static pressure range
0 to 90 Pa

*024 model is 0 to 50Pa

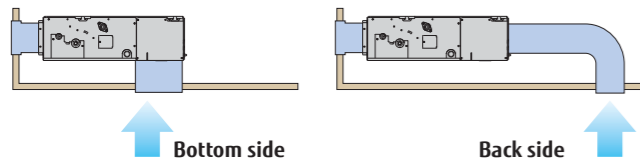
High lift drain pump



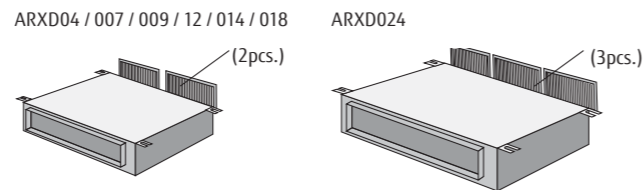
Drain hose is standard accessory

Air-intake

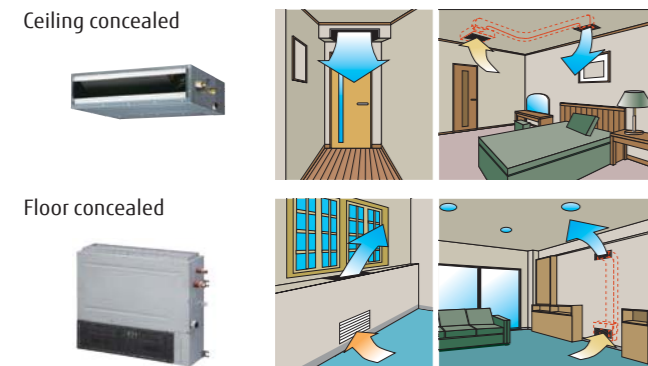
Air intake direction can be selected to match the installation site.



Filter (Accessory)

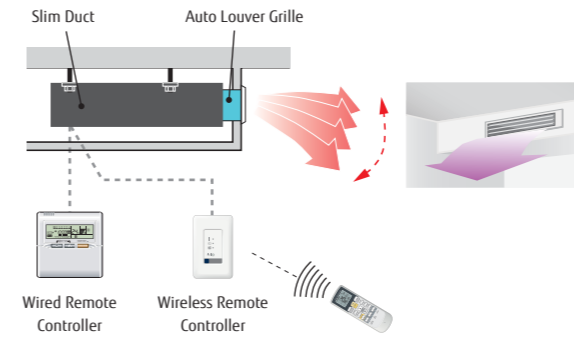


Flexible installation



Auto Louver Grille Kit (Option)

Simple flat Auto Louver will provide comfort airflow and harmonize with luxury interior.



Optional parts

- Remote Sensor Unit : UTY-XSZX
- IR Receiver Unit : UTB-YWC
- Auto Louver Grille Kit : UTD-GXTA-W (for ARXD04/007/009/012/014)
UTD-GXTB-W (for ARXD018)
UTD-GXTC-W (for ARXD024)
- External Power Supply Unit : UTZ-GXXA

Specifications

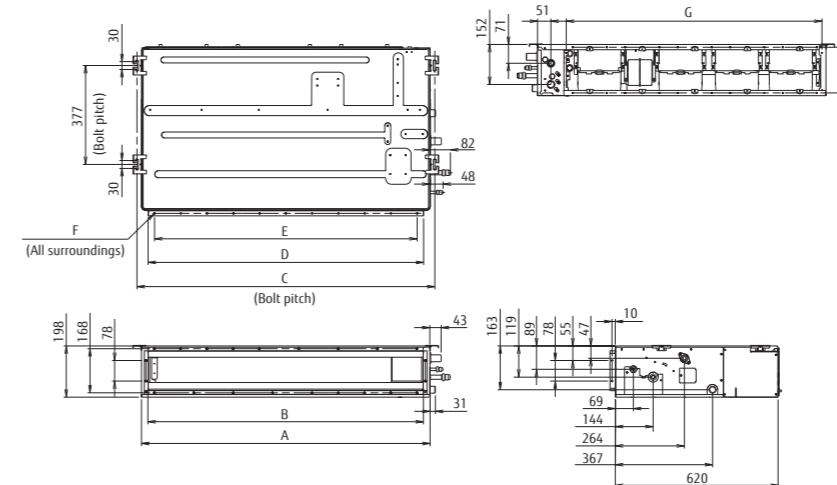
Model name	ARXD04GALH	ARXD007GLEH	ARXD009GLEH	ARXD012GLEH	ARXD014GLEH	ARXD018GLEH	ARXD024GLEH
Power source	Single - phase, ~230V, 50Hz						
Capacity	Cooling	1.1	2.2	2.8	3.6	4.5	5.6
	Heating	1.3	2.8	3.2	4.0	5.0	6.3
Input power	kW						
Airflow rate	High	510	550	600	600	800	1,330
	Med-H	-	480	510	530	680	820
	Med	400/470*1	440	460	490	600	730
	Med-L	-	410	420	450	520	630
	Low	320/440*1	370	370	410	440	540
	Quiet	-	320	320	340	340	470
Static pressure range	Pa						
Standard static pressure	Pa						
Sound pressure level	High	26	28	29	30	34	35
	Med-H	-	26	27	28	32	31
	Med	21/25*1	25	25	27	30	29
	Med-L	-	24	24	26	28	27
	Low	20/22*1	22	22	24	25	25
	Quiet	-	21	21	22	22	23
Dimensions (H × W × D)	mm	198 × 700 × 620	198 × 700 × 620	198 × 700 × 620	198 × 700 × 620	198 × 700 × 620	198 × 900 × 620
Weight	kg	17	17	17	18	18	22
Connection pipe diameter	Liquid (Flare)	6.35	6.35	6.35	6.35	6.35	6.35
	Gas (Flare)	12.70	9.52	9.52	12.70	12.70	12.70
Drain hose diameter (I.D./O.D.)	mm						
	25 / 32						

Note : Specifications are based on the following conditions.
Cooling : Indoor temperature of 27°CDB / 19°CWB, and outdoor temperature of 35°CDB / 24°CWB.
Heating : Indoor temperature of 20°CDB / (15°CWB), and outdoor temperature of 7°CDB / 6°CWB.
Pipe length : 7.5 m; Height difference between outdoor unit and indoor unit : 0 m. Voltage : 230 [V].

*1: This value is under cooling operation.

Dimensions (Unit: mm)

*Service accessibility must be allowed for when installing the product. Please consult the installation manual for the necessary service access size.



	ARXD04-014	ARXD018	ARXD024
A	700	900	1100
B	650	850	1050
C	734	934	1134
D	650	850	1050
E	P100x6=600	P100x8=800	P100x10=1000
F	18xØ5	22xØ5	26xØ5
G	574	774	974