

COMPRESSOR MODEL NUMBER SYSTEM

H 2 9 B 18 U A B C A
 Mounting Feet Dim A = 7.5 x 7.5 B = 4.8 x 8.0 C = 8.4 x 9.8 D = 6.12 x 8.0 E = 9.5 x 9.5
 F = 10.5 x 10.5 H = 7.5 x 21.5 J = 7.5 x 22.5 X = 8.8 x 6.1

Electrical Characteristics A = 115-1-60
 B = 230-1-60
 C = 230/208-1-60
 D = 230/208-3-60 (220/200-3-50)
 E = 460-3-60 (380/415-3-50)
 F = 575-3-60 (500-3-50)
 G = 200-1-60
 H = 265-1-60 (220/240-1-50)
 J = 230/208-1-50
 K = 220/240-1-50
 L = 230/200-3-60 (220/200-3-50)

Motor Protector B = Internal Line Break
 P = Pilot Duty - Solid State
 R = Pilot Duty - Solid State (2nd Generation)
 T = Pilot Duty - Internal Thermostat and External Sensing Elements

Motor Type A = PSC Permanent Split Capacitor
 B = CSR Capacitor Start/Cap. Run
 C = RSCR Resistance Start/Cap. Run
 D = AI 3 Phase-Across the Line
 E = CSIR Cap. Start/Induction Run

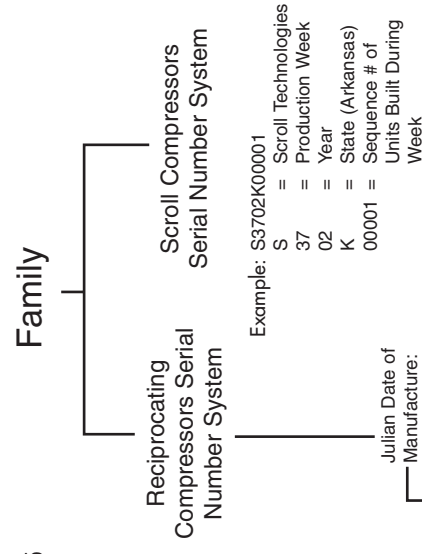
Capacity 183 = 18+3-0's = 18,000; 244 = 24+4-0's = 240,000 BTU/HR
 18U = 18+3-0's = 18,000 BTU/HR

Family A = Model A Reciprocating
 B = Model B Reciprocating
 C = Scroll (≤42K)
 D = Dual Compressor Application
 G = Model G Reciprocating
 R = Scroll (>42K)

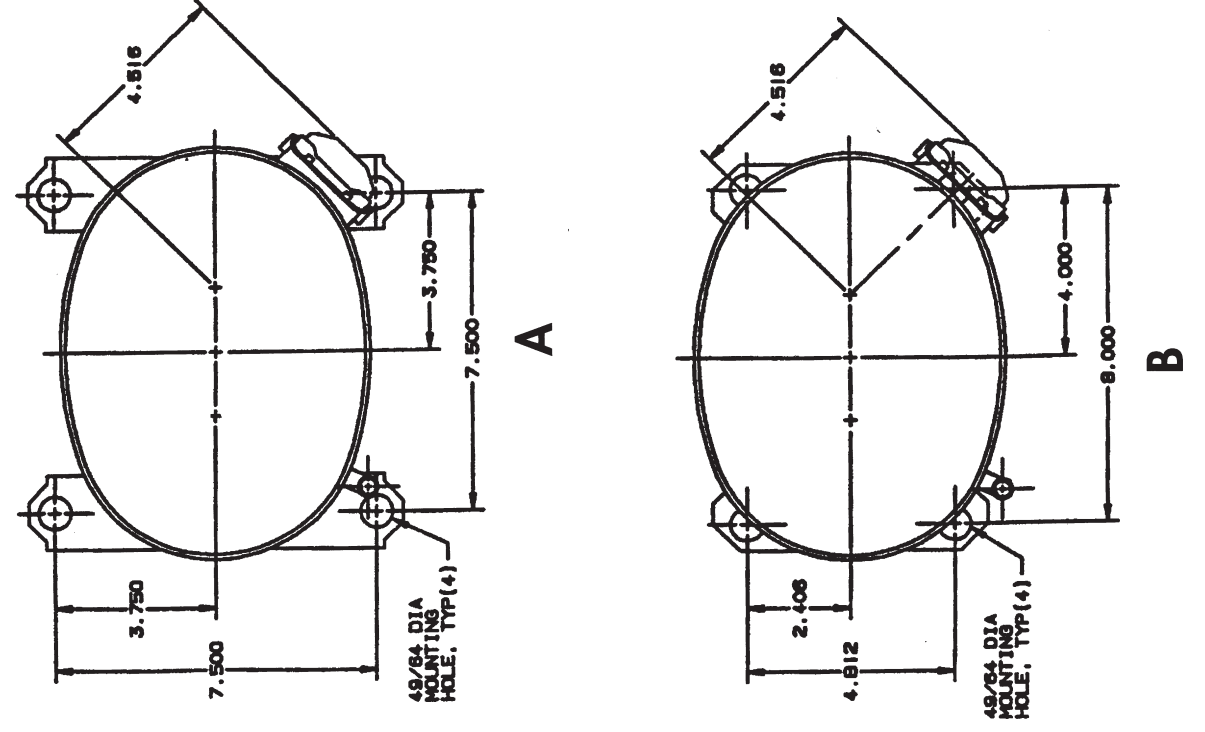
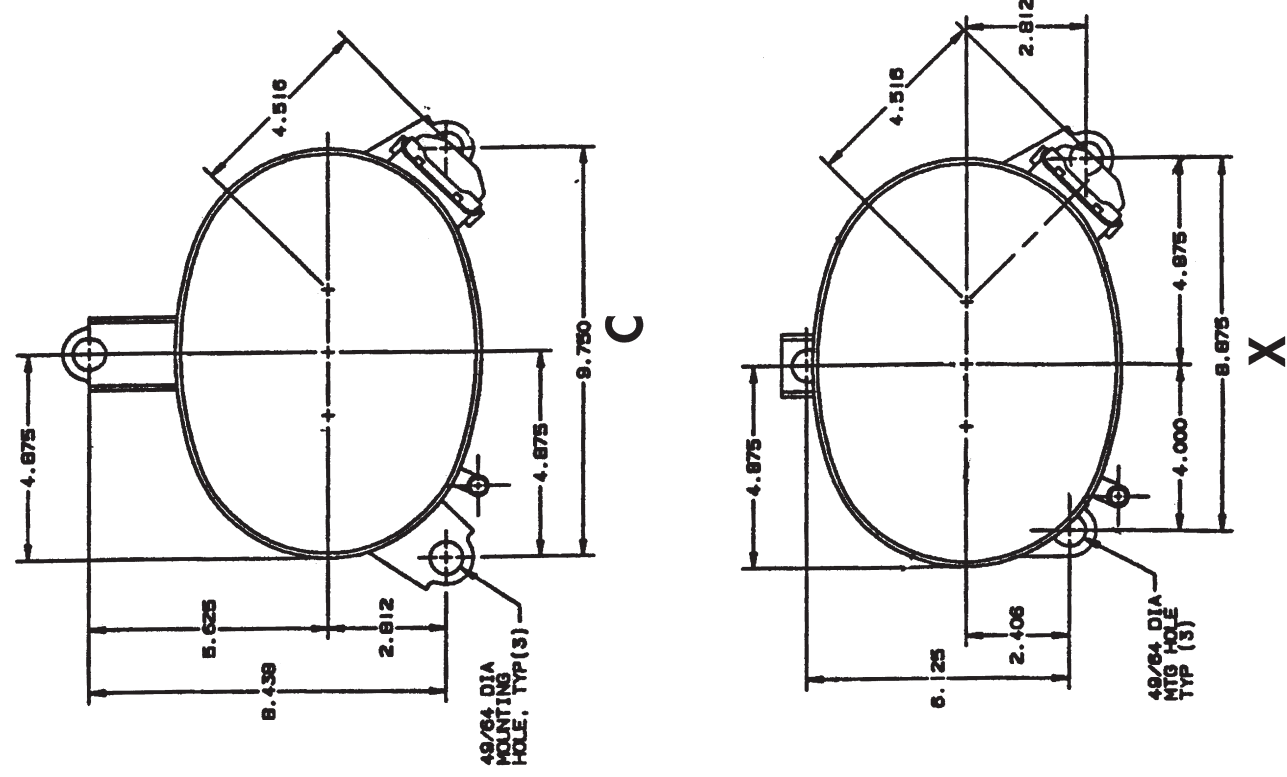
Generation B = Second Generation- No PRV (Except G series)
 D = Dual Compressor Application (Single & Interconnected)
 E = High Efficiency
 M = Alternate Pressure Relief Valve
 N = No Pressure Relief Valve (Except G series)
 O = Basic Standard Model
 P = Basic Standard Model- Upgrade Plus
 T = Second Generation - Basic Standard Model

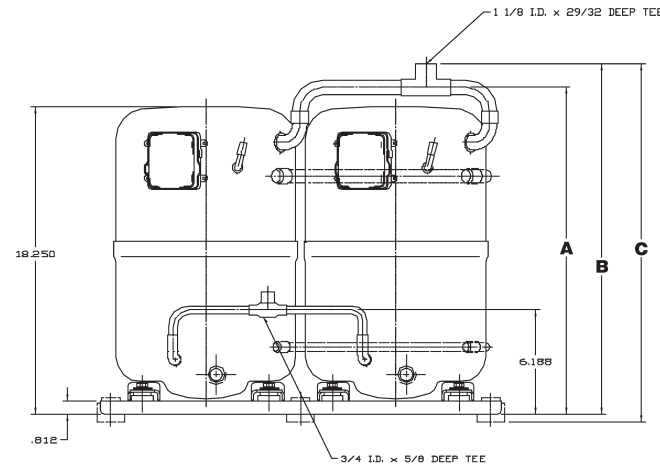
Type of Refrigerant 1 = R12
 2 = R22
 4 = R134a
 5 = R502 or Alt. Replacement Refrigerant SUVA-HP-81 (Refrigerant R402B)
 6 = R404A (SUVA HP62)
 7 = R407C (SUVA AC9000 or KLEA 66) 8 = R410A

Refrigeration Application H = High Temperature
 M = Medium Temperature
 L = Low Temperature
 S = High Temperature (One Capacity / 1,2,3, or 4 cylinder) Half/Single
 T = High Temperature (Two Capacities / 2 or 4 cylinder)- Twin/Single

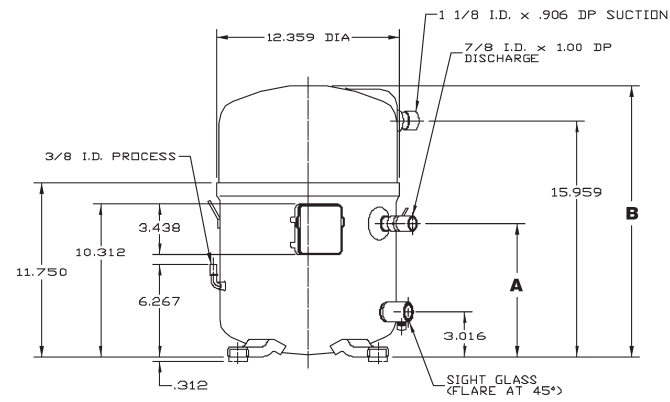


MOUNTING FEET CONFIGURATION

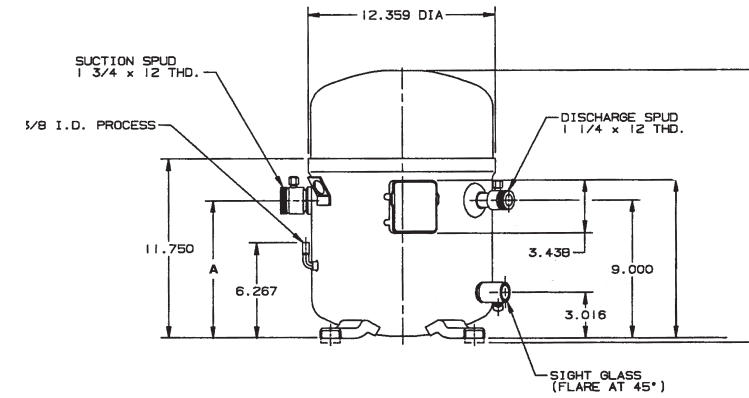




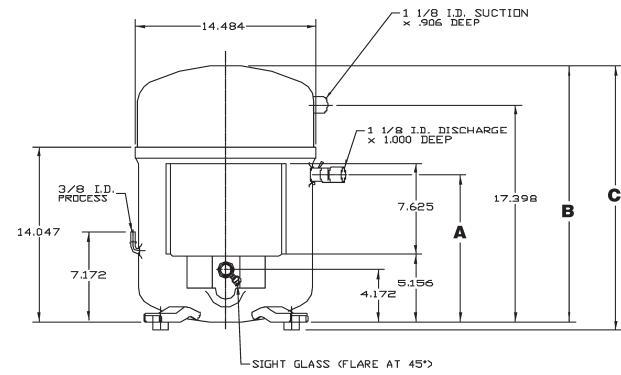
H25D



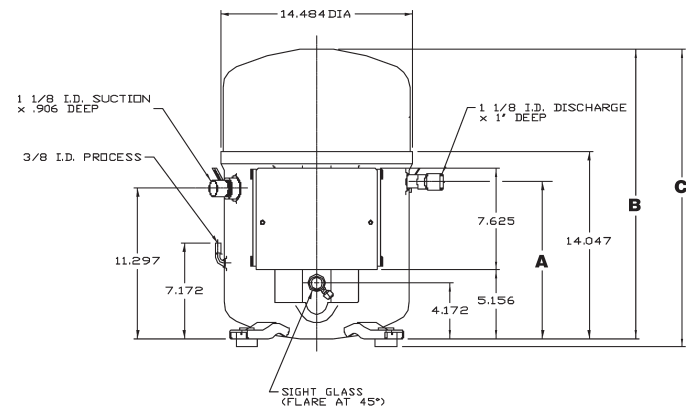
H25G & H75G
(094-144)



H2BG & H7BG



H25G & H75G
(184-294)



H2NG & H7NG
(184-294)