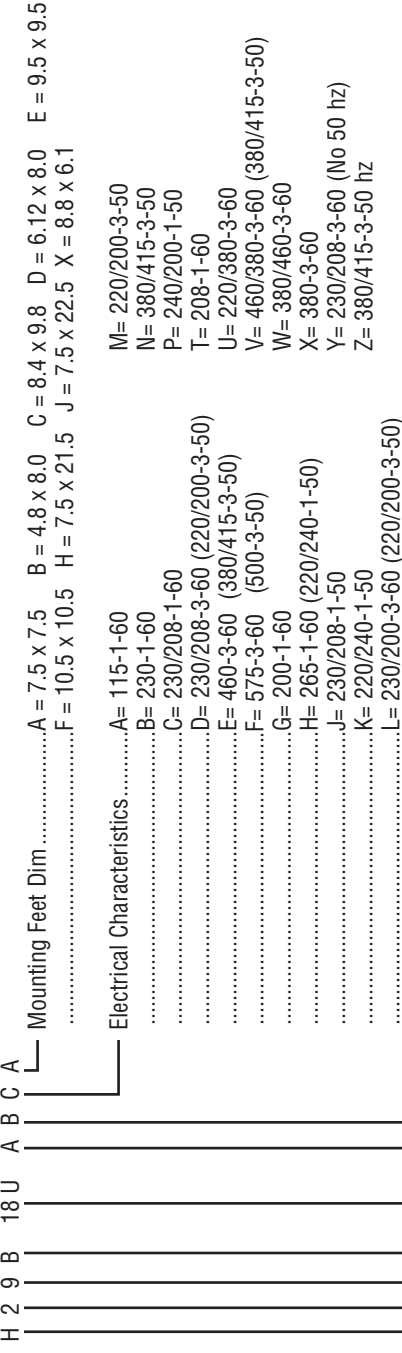


COMPRESSOR MODEL NUMBER SYSTEM



- Mounting Feet Dim A = 7.5 x 7.5 B = 4.8 x 8.0 C = 8.4 x 9.8 D = 6.12 x 8.0 E = 9.5 x 9.5
 F = 10.5 x 10.5 H = 7.5 x 21.5 J = 7.5 x 22.5 X = 8.8 x 6.1
- Electrical Characteristics M= 220/200-3-50
 N= 380/415-3-50
 P= 240/200-1-50
 T= 208-1-60
 U= 220/380-3-60
 V= 460/380-3-60 (380/415-3-50)
 W= 380/460-3-60
 X= 380-3-60
 Y= 230/208-3-60 (No 50 Hz)
 Z= 380/415-3-50 Hz

- Motor Protector B= Internal Line Break
 P= Pilot Duty - Solid State
 R= Pilot Duty - Solid State (2nd Generation)
 T= Pilot Duty - Internal Thermostat and External Sensing Elements

- Motor Type A= PSC Permanent Split Capacitor
 B= CSR Capacitor Start/Cap. Run
 C= RSCR Resistance Start/Cap. Run
 D= AI 3 Phase-Across the Line
 E= CSIR Cap. Start/Induction Run

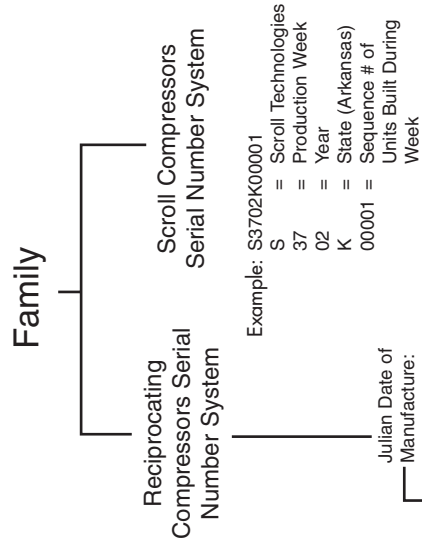
- Capacity 183= 18+3-0's = 18,000; 244 = 24+4-0's = 240,000 BTU/HR
 18U= 18+3-0's = 18,000 BTU/HR

- Family A= Model A Reciprocating
 B= Model B Reciprocating
 C= Scroll (≤42K)
 D= Dual Compressor Application
 G= Model G Reciprocating
 R= Scroll (>42K)

- Generation B= Second Generation- No PRV (Except G series)
 D= Dual Compressor Application (Single & Interconnected)
 E= High Efficiency
 M= Alternate Pressure Relief Valve
 N= No Pressure Relief Valve (Except G series)
 O= Basic Standard Model
 P= Basic Standard Model- Upgrade Plus
 T= Second Generation - Basic Standard Model

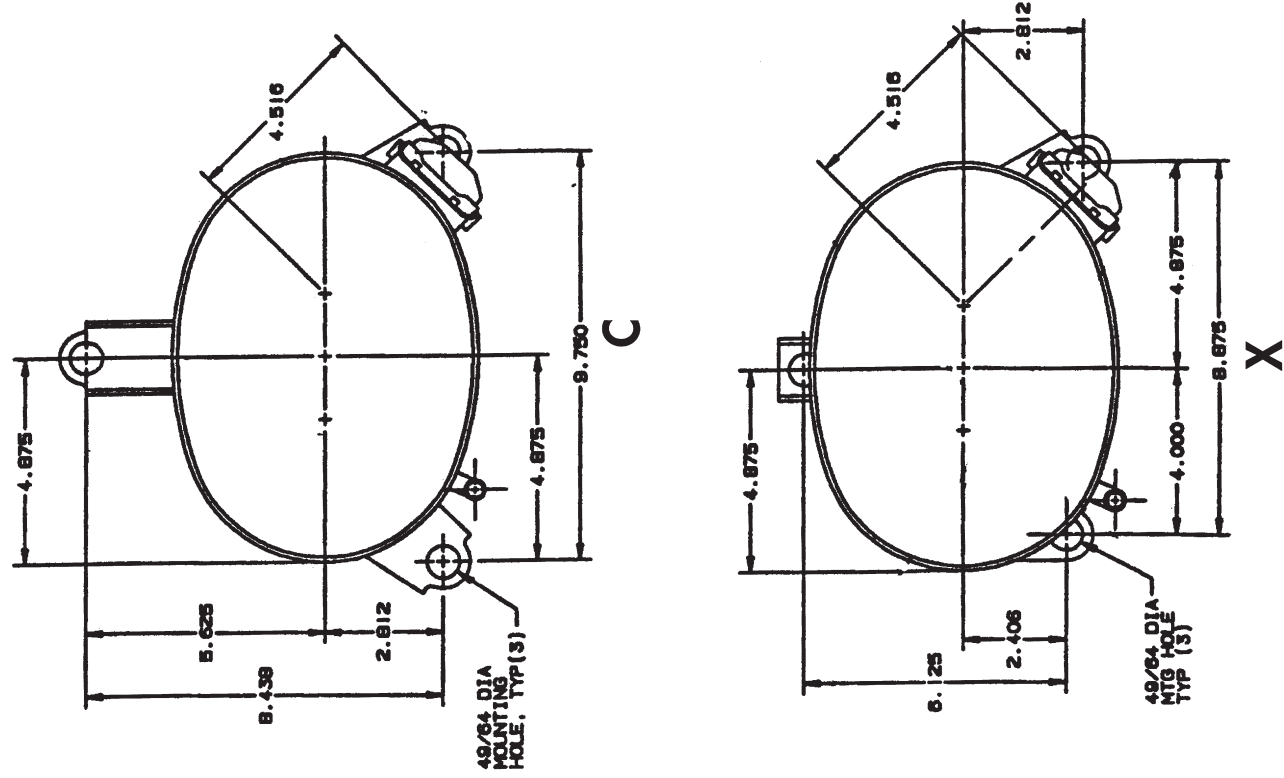
- Type of Refrigerant 1= R12
 2= R22
 4= R134a

- Refrigeration Application H= High Temperature
 M= Medium Temperature
 L= Low Temperature



- Julian Date of Manufacture:
 Year Manufactured: 02
 Mfg. Location: 2
 Daily Unit Manufactured: 00235
 Example: S3702K00001
 S = Scroll Technologies
 37 = Production Week
 02 = Year
 K = State (Arkansas)
 00001 = Sequence # of Units Built During Week

MOUNTING FEET CONFIGURATION



H20C SERIES

60 HZ

Model	@45/130					@45/100			@45/110			Electrical Data			Displacement	
	Capacity		Motor Input	EER/COP		Capacity	Motor Input	EER	Capacity	Motor Input	EER	RLA	LRA	MCC	IN/REV	CM/REV
	BTU/H	WATTS	WATTS	BTU/WH	W/W	BTU/H	WATTS	BTU/WH	BTU/H	WATTS	BTU/WH					
230/208 VOLTS - 1 Phase																
H20C233ABC	22800	6690	2100	10.9	3.2	27215	1499	18.2	25700	1700	15.1	11.5	64	18.0	1.76	28.83
H20C303ABC	29800	8744	2700	11.0	3.2	35209	1970	17.9	33500	2190	15.3	14.7	83	23.0	2.30	37.67
H20C343ABC	33700	9888	3080	10.9	3.2	40348	2198	18.4	38200	2490	15.3	16.7	95	26.0	2.80	45.86
H20C373ABC	36700	10769	3350	11.0	3.2	43929	2390	18.4	41600	2710	15.4	18.0	105	28.0	3.10	50.78
H20C403ABC	39700	11649	3620	11.0	3.2	47467	2584	18.4	45000	2930	15.4	19.9	115	31.0	3.32	54.38
H20C423ABC	41700	12236	3800	11.0	3.2	49841	2710	18.4	47200	3070	15.4	20.5	115	32.0	3.49	57.17
230/208 VOLTS - 3 Phase																
H20C343DBY	33700	9888	3030	11.1	3.3	39542	2148	18.4	37600	3030	12.4	10.6	75	16.5	2.80	45.86
H20C373DBY	36600	10739	3290	11.1	3.3	43031	2336	18.4	41000	2620	15.6	11.4	90	17.8	3.10	50.78
H20C403DBY	39600	11619	3560	11.1	3.3	46407	2529	18.3	44300	3180	13.9	12.4	90	19.4	3.30	54.05
H20C423DBY	41600	12206	3740	11.1	3.3	48846	2653	18.4	46500	2980	15.6	12.4	90	19.4	3.50	57.33
380 VOLTS - 3 Phase																
H20C373DBX	36680	10762	3290	11.1	3.3	43410	2350	18.5	41300	2635	15.7	8.3	50	13.0	3.10	50.78
H20C423DBX	41600	12206	3740	11.1	3.3	49300	2670	18.5	46900	2990	15.7	8.5	50	13.5	3.50	57.34
460 VOLTS - 3 Phase																
H20C343DBE	33700	9888	3040	11.1	3.3	39903	2161	18.5	37900	2430	15.6	5.3	38	8.3	2.80	45.86
H20C373DBE	36700	10769	3310	11.1	3.3	43424	2351	18.5	41300	2640	15.6	6.2	45	9.7	3.10	50.78
H20C403DBE	39700	11649	3580	11.1	3.3	46945	2542	18.5	44600	2860	15.6	6.2	45	9.7	3.30	54.05
H20C423DBE	41300	12118	3650	11.3	3.3	49377	2594	19.0	46765	2868	16.3	6.7	45	10.5	3.49	57.17
575 VOLTS - 3 Phase																
H20C373DBF	36700	10769	3370	10.9	3.2	42759	2330	18.4	40803	2676	15.2	5.0	36	7.8	3.08	50.45
H20C423DBF	41650	12221	3790	11.0	3.2	48568	2552	19.0	46468	2914	15.9	5.7	36	9.0	3.49	57.17

H20C SERIES

50 HZ

220/240 VOLTS - 1 Phase																
H20C343ABK	27600	8098	2550	10.8	3.2	32655	1819	18.0	31000	2040	15.2	11.5	75	18.0	2.80	45.86
H20C373ABK	30600	8979	2820	10.9	3.2	36596	2031	18.0	34700	2300	15.1	12.5	85	21.5	3.10	50.78
H20C403ABK	32500	9536	3000	10.8	3.2	38418	2142	17.9	36500	2400	15.2	13.8	85	21.5	3.30	54.05
400 VOLTS - 3 Phase																
H20C343DBE	28100	8245	2590	10.8	3.2	32950	1807	18.2	31400	2040	15.4	5.3	38	8.3	2.80	45.86
H20C373DBE	30500	8949	2820	10.8	3.2	35858	1967	18.2	34100	2220	15.4	6.2	45	9.7	3.10	50.78
H20C403DBE	33000	9683	3040	10.9	3.2	38765	2123	18.3	36900	2400	15.4	6.2	45	9.7	3.30	54.05
H20C423DBE	34400	10094	3120	11.0	3.2	41657	2201	18.9	39571	2475	16.0	6.7	45	10.5	3.49	57.17

H70C SERIES (R407C)

50 HZ

220/240 VOLTS - 1 Phase																
H70C343ABK	26678	7828	2579	10.3	3.0	32475	1776	18.3	30597	2036	15.0	11.5	75	22.0	2.80	45.86
H70C373ABK	30198	8861	2935	10.3	3.0	36777	2024	18.2	34999	2246	15.6	13.8	85	22.0	3.10	50.78
H70C403ABK	31388	9210	3012	10.4	3.1	38214	2121	18.0	35993	2398	15.0	13.8	85	24.0	3.30	54.05
400 VOLTS - 3 Phase																
H70C343DBE	27076	7945	2622	10.3	3.0	32769	1781	18.4	30924	2028	15.2	6.0	38	9.0	2.80	45.86
H70C373DBE	29467	8646	2855	10.3	3.0	35663	1921	18.6	33653	2205	15.3	7.1	45	11.0	3.10	50.78
H70C403DBE	31900	9360	3080	10.4	3.0	38600	2090	18.5	36400	2400	15.2	7.1	45	11.0	3.30	54.06

*Data Subject to Revision

H20C SERIES

60 HZ

Model	Oil Charge		Weight				ELECTRICAL START COMPONENTS			DIMENSIONS								
	OZ	L	Net	Ship	Lbs	Kg	Run Capacitor	Start Capacitor	G.E. Relay	*DIAGRAMS FOUND ON PAGE 12								
							MFD/VOLTS	MFD/VOLTS		IN	A	MM	IN	B	MM	IN	C	MM
230/208 VOLTS - 1 Phase																		
H20C233ABC	36	1.1	57.3	26.0	60.1	27.3	35/370	88-108/320	3ARR3*9P*	9.4	239.8	14.3	362.4	15.8	401.5			
H20C303ABC	36	1.1	58.5	26.6	61.3	27.9	35/440	88-108/250	3ARR3*10S*	9.4	239.8	14.3	362.4	15.8	401.5			
H20C343ABC	36	1.1	61.5	28.0	64.3	29.2	35/440	88-108/250	3ARR3*25S*	10.2	258.1	15.2	384.5	16.7	423.6			
H20C373ABC	36	1.1	63.0	28.6	65.8	29.9	35/440	88-108/250	3ARR3*6S*	10.2	258.1	15.2	384.5	16.7	423.6			
H20C403ABC	36	1.1	64.0	29.1	66.8	30.4	40/440	88-108/250	3ARR3*6S*	10.2	258.1	15.2	384.5	16.7	423.6			
H20C423ABC	36	1.1	64.5	29.3	67.3	30.6	40/440	88-108/250	3ARR3*6S*	10.2	258.1	15.2	384.5	16.7	423.6			
230/208 VOLTS - 3 Phase																		
H20C343DBY	36	1.1	61.5	28.0	64.3	29.2	-Not Req'd	-Not Req'd	-Not Req'd	10.2	258.1	15.2	384.5	16.7	423.6			
H20C373DBY	36	1.1	63.0	28.6	65.8	29.9	-Not Req'd	-Not Req'd	-Not Req'd	10.2	258.1	15.2	384.5	16.7	423.6			
H20C403DBY	36	1.1	64.0	29.1	66.8	30.4	-Not Req'd	-Not Req'd	-Not Req'd	10.2	258.1	15.2	384.5	16.7	423.6			
H20C423DBY	36	1.1	64.5	29.3	67.3	30.6	-Not Req'd	-Not Req'd	-Not Req'd	10.2	258.1	15.2	384.5	16.7	423.6			
380 VOLTS - 3 Phase																		
H20C373DBX	36	1.0	68.0	30.9	78.0	35.5	-Not Req'd	-Not Req'd	-Not Req'd	10.2	258.0	15.2	384.4	16.7	423.4			
H20C423DBX	36	1.0	69.0	31.4	74.0	33.7	-Not Req'd	-Not Req'd	-Not Req'd	10.2	258.0	15.2	384.4	16.7	423.4			
460 VOLTS - 3 Phase																		
H20C343DBE	36	1.1	61.5	28.0	64.3	29.2	-Not Req'd	-Not Req'd	-Not Req'd	10.2	258.1	15.2	384.5	16.7	423.6			
H20C373DBE	36	1.1	63.0	28.6	65.8	29.9	-Not Req'd	-Not Req'd	-Not Req'd	10.2	258.1	15.2	384.5	16.7	423.6			
H20C403DBE	36	1.1	64.0	29.1	66.8	30.4	-Not Req'd	-Not Req'd	-Not Req'd	10.2	258.1	15.2	384.5	16.7	423.6			
H20C423DBE	36	1.1	65.5	29.8	68.3	31.0	-Not Req'd	-Not Req'd	-Not Req'd	10.2	258.1	15.2	384.5	16.7	423.6			
575 VOLTS - 3 Phase																		
H20C373DBF	36	1.1	65.5	29.8	68.3	31.0	-Not Req'd	-Not Req'd	-Not Req'd	10.2	258.1	15.2	384.5	16.7	423.6			
H20C423DBF	36	1.1	65.5	29.8	70.0	31.8	-Not Req'd	-Not Req'd	-Not Req'd	10.2	258.1	15.2	384.5	16.7	423.6			

H20C SERIES

50 HZ

220/240 VOLTS - 1 Phase																		
H20C343ABK	36	1.1	61.5	28.0	64.3	29.2	55/440	88-108/250	3ARR3*24AP*	10.2	258.1	15.2	384.5	16.7	423.6			
H20C373ABK	36	1.1	61.5	28.0	64.3	29.2	55/440	88-108/250	3ARR3*24AP*	10.2	258.1	15.2	384.5	16.7	423.6			
H20C403ABK	36	1.1	64.0	29.1	69.0	31.4	55/440	88-108/250	3ARR3*24AP*	10.2	258.1	15.2	384.5	16.7	423.6			
400 VOLTS - 3 Phase																		
H20C343DBE	36	1.1	61.5	28.0	64.3	29.2	-Not Req'd	-Not Req'd	-Not Req'd	10.2	258.1	15.2	384.5	16.7	423.6			
H20C373DBE	36	1.1	61.5	28.0	64.3	29.2	-Not Req'd	-Not Req'd	-Not Req'd	10.2	258.1	15.2	384.5	16.7	423.6			
H20C403DBE	36	1.1	61.5	28.0	64.3	29.2	-Not Req'd	-Not Req'd	-Not Req'd	10.2	258.1	15.2	384.5	16.7	423.6			
H20C423DBE	36	1.1	61.5	28.0	64.3	29.2	-Not Req'd	-Not Req'd	-Not Req'd	10.2	258.1	15.2	384.5	16.7	423.6			

H70C SERIES (R407C)

50 HZ

220/240 VOLTS - 1 Phase																		
H70C343ABK	36	1.1	63.0	28.6	65.5	29.8	55/440	88-108/250	3ARR3*24AP*	10.2	258.0	15.2	384.5	16.7	423.6			
H70C373ABK	36	1.1	63.0	28.6	65.5	29.8	55/440	88-108/250	3ARR3*24AP*	10.2	258.1	15.2	384.5	16.7	423.6			
H70C403ABK	36	1.1	65.5	29.8	68.0	29.8	55/440	88-108/250	3ARR3*24AP*	10.2	258.0	15.2	384.5	16.7	423.6			
400 VOLTS - 3 Phase																		
H70C343DBE	36	1.1	65.5	29.8	68.0	30.9	-Not Req'd	-Not Req'd	-Not Req'd	10.2	258.0	15.2	384.5	16.7	423.6			
H70C373DBE	36	1.1	65.5	29.8	68.0	30.9	-Not Req'd	-Not Req'd	-Not Req'd	10.2	258.0	15.2	384.5	16.7	423.6			
H70C403DBE	36	1.0	65.5	29.8	68.0	30.9	-Not Req'd	-Not Req'd	-Not Req'd	10.2	257.9	15.2	384.4	16.7	423.4			

H21R SERIES

60 HZ

Model	@45/130				@45/100			@45/110			Electrical Data RLA LRA MCC			Displacement IN ³ /REV CM ³ /REV		
	Capacity BTU/H WATTS		Motor Input WATTS	EER/COP BTU/WH W/W	Capacity BTU/H	Motor Input WATTS	EER BTU/WH	Capacity BTU/H	Motor Input WATTS	EER BTU/WH						
230/208 VOLTS - 1 Phase																
H21R453ABC	44800	13145	3950	11.3	3.3	52731	2753	19.2	50169	3116	16.1	23.4	126	36.5	3.70	60.61
H21R483ABC	48500	14231	4250	11.4	3.3	56962	2928	19.5	54088	3320	16.3	24.4	150	38.0	3.96	64.86
H21R543ABC	54100	15874	4800	11.3	3.3	63615	3312	19.2	60521	3705	16.3	26.9	175	42.0	4.30	70.43
H21R583ABC	57900	16989	5120	11.3	3.3	68509	3569	19.2	65099	4116	15.8	26.9	175	45.0	4.77	78.13
H21R603ABC	60700	17811	5390	11.3	3.3	71442	3685	19.4	67974	4209	16.1	28.9	175	45.0	4.94	80.92
230/208 VOLTS - 3 Phase																
H21R453DBY	44057	12927	3942	11.2	3.3	52103	2671	19.5	49580	3056	16.2	13.0	93	20.2	3.70	60.61
H21R483DBY	46900	13761	4300	10.9	3.2	54982	2904	18.9	49879	3347	14.9	14.1	105	22.0	3.96	64.86
H21R513DBY	49600	14554	4440	11.2	3.3	58813	3025	19.4	52646	3433	15.3	15.4	105	24.0	4.20	68.80
H21R543DBY	53619	15733	4721	11.4	3.3	63280	3261	19.4	60222	3672	16.4	16.7	115	26.0	4.50	73.71
H21R583DBY	56500	16578	5020	11.3	3.3	66946	3314	20.2	63614	3829	16.6	15.5	125	26.5	4.77	78.13
460 VOLTS - 3 Phase																
H21R483DBE	47000	13791	4230	11.1	3.3	55589	2848	19.5	52811	3259	16.2	7.4	55	11.5	3.96	64.86
H21R543DBE	53619	15733	4721	11.4	3.3	63280	3261	19.4	60222	3672	16.4	8.9	62	13.0	4.50	73.71
H21R583DBE	56600	16608	5040	11.2	3.3	67110	3422	19.6	63880	3905	16.4	8.9	67	13.9	4.77	78.13
H21R603DBE	58400	17136	5200	11.2	3.3	69028	3504	19.7	65607	3998	16.4	9.1	67	14.2	4.94	80.92
575 VOLTS - 3 Phase																
H21R583DBF	56671	16628	4967	11.4	3.3	66951	3368	19.9	63619	3824	16.6	7.1	50	11.0	4.90	80.26

H21R SERIES

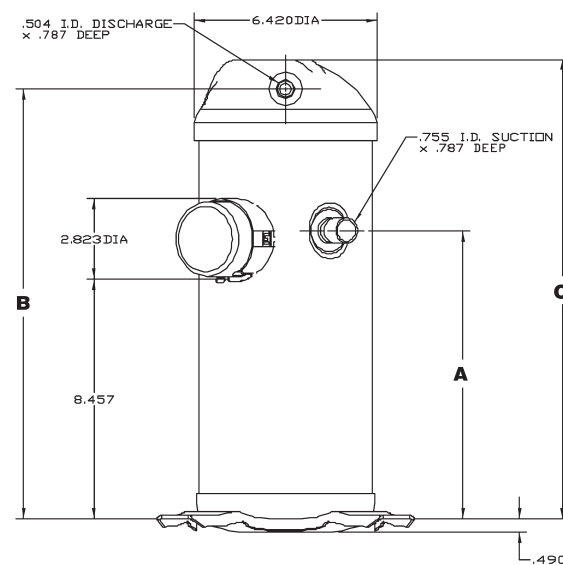
50 HZ

400 VOLTS - 3 Phase																
H21R483DBE	39900	11708	3630	11.0	3.2	47594	2415	19.7	45285	2752	16.5	7.4	55	11.5	3.96	64.86
H21R583DBE	48100	14114	4340	11.1	3.3	57541	2873	20.0	51601	3296	15.7	8.9	67	13.9	4.80	78.62
H21R603DBE	49600	14554	4440	11.2	3.3	59004	2980	19.8	56039	3882	14.4	9.1	67	14.2	5.00	81.90

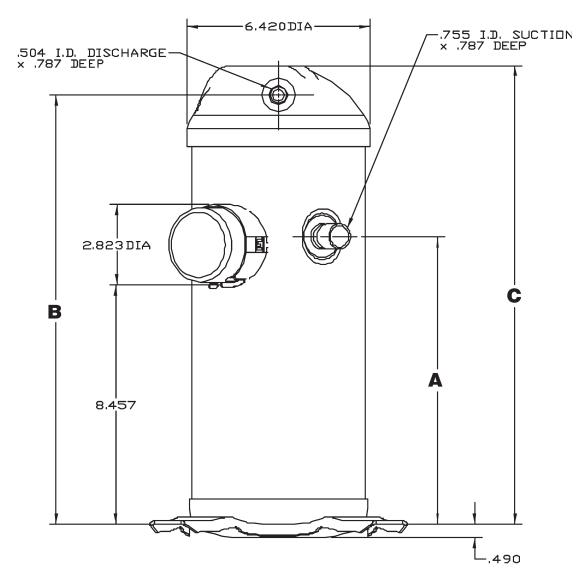
*Data Subject to Revision

C & R FAMILY

Diagrams



H20C & H70C



H21C

H21R SERIES

60 HZ

Model	Oil Charge OZ L		Weight Net Ship Lbs Kg Lbs Kg				ELECTRICAL START COMPONENTS			DIMENSIONS *DIAGRAMS FOUND ON PAGE 13					
							Run Capacitor MFD/VOLTS	Start Capacitor MFD/VOLTS	G.E. Relay	A		B		C	
										IN	MM	IN	MM	IN	MM
230/208 VOLTS - 1 Phase															
H21R453ABC	65	1.9	86.0	39.1	88.8	40.4	70/370	88-108/250	3ARR3*3L*	12.2	310.9	17.2	437.0	18.8	476.1
H21R483ABC	65	1.9	86.0	39.1	88.8	40.4	60/370	161-193/250	3ARR3*3L*	12.2	310.9	17.2	437.0	18.8	476.1
H21R543ABC	65	1.9	88.0	40.0	93.0	42.3	80/370	145-175/330	3ARR3*3P*	12.2	310.9	17.2	437.0	18.8	476.1
H21R583ABC	65	1.9	88.5	40.2	91.3	41.5	80/370	145-175/330	3ARR3*3P*	12.2	310.9	17.5	444.7	19.1	483.7
H21R603ABC	65	1.9	89.0	40.5	91.8	41.7	80/370	145-175/330	3ARR3*3P*	12.2	310.9	17.5	444.7	19.1	483.7
230/208 VOLTS - 3 Phase															
H21R453DBY	70	2.1	72.2	32.8	74.7	34.0	-Not Req'd	-Not Req'd	-Not Req'd	12.2	310.9	17.2	437.0	18.8	476.1
H21R483DBY	70	2.1	73.0	33.2	75.8	34.5	-Not Req'd	-Not Req'd	-Not Req'd	12.2	310.9	17.2	437.0	18.8	476.1
H21R513DBY	70	2.1	74.0	33.6	76.8	34.9	-Not Req'd	-Not Req'd	-Not Req'd	12.2	310.9	17.2	437.0	18.8	476.1
H21R543DBY	76	2.2	82.0	37.3	87.0	39.5	-Not Req'd	-Not Req'd	-Not Req'd	12.2	310.9	17.2	437.0	18.8	476.1
H21R583DBY	76	2.2	77.5	35.2	80.3	36.5	-Not Req'd	-Not Req'd	-Not Req'd	12.2	310.9	17.5	444.7	19.1	483.7
460 VOLTS - 3 Phase															
H21R483DBE	70	2.1	73.3	33.3	76.1	34.6	-Not Req'd	-Not Req'd	-Not Req'd	12.2	310.9	17.2	437.0	18.8	476.1
H21R543DBE	76	2.2	81.0	36.8	86.0	39.1	-Not Req'd	-Not Req'd	-Not Req'd	12.2	310.9	17.2	437.0	18.8	476.1
H21R583DBE	76	2.2	78.5	35.7	81.3	37.0	-Not Req'd	-Not Req'd	-Not Req'd	12.2	310.9	17.5	444.7	19.1	483.7
H21R603DBE	76	2.2	78.5	35.7	81.3	37.0	-Not Req'd	-Not Req'd	-Not Req'd	12.2	310.9	17.5	444.7	19.1	483.7
575 VOLTS - 3 Phase															
H21R583DBF	72	2.1	92.0	41.8	95.0	43.2	-Not Req'd	-Not Req'd	-Not Req'd	12.2	310.9	17.5	444.7	19.1	483.7

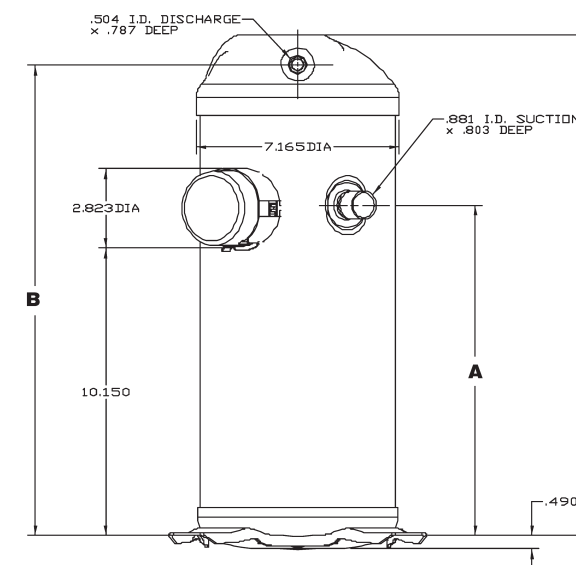
H21R SERIES

50 HZ

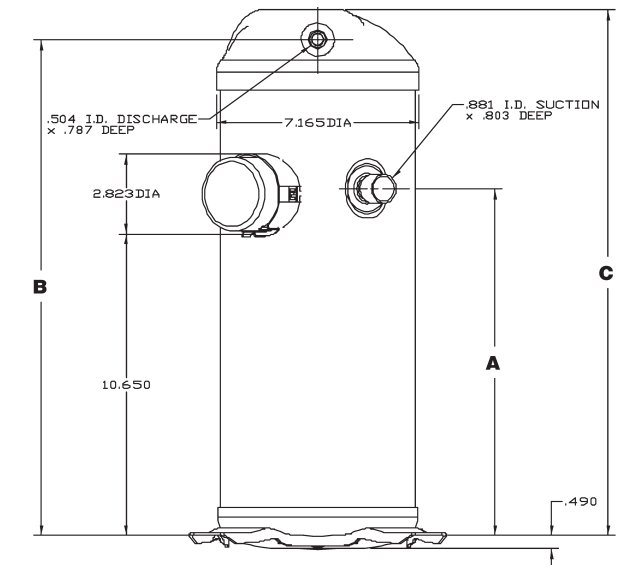
400 VOLTS - 3 Phase															
H21R483DBE	70	2.1	79.0	35.9	81.8	37.2	-Not Req'd	-Not Req'd	-Not Req'd	12.2	310.9	17.2	437.0	18.8	476.1
H21R583DBE	76	2.2	79.0	35.9	81.8	37.2	-Not Req'd	-Not Req'd	-Not Req'd	12.2	310.9	17.5	444.7	19.1	483.7
H21R603DBE	76	2.2	79.0	35.9	81.8	37.2	-Not Req'd	-Not Req'd	-Not Req'd	12.2	310.9	17.5	444.7	19.1	483.7

C & R FAMILY

Diagrams



H20R & H70R



H21R