

COMPRESSOR MODEL NUMBER SYSTEM

H 2 9 B 18 U A B C A

Mounting Feet Dim A = 7.5 x 7.5 B = 4.8 x 8.0 C = 8.4 x 9.8 D = 6.12 x 8.0 E = 9.5 x 9.5
 F = 10.5 x 10.5 H = 7.5 x 21.5 J = 7.5 x 22.5 X = 8.8 x 6.1

Electrical Characteristics A = 115-1-60
 B = 230-1-60
 C = 230/208-1-60
 D = 230/208-3-60 (220/200-3-50)
 E = 460-3-60 (380/415-3-50)
 F = 575-3-60 (500-3-50)
 G = 200-1-60
 H = 265-1-60 (220/240-1-50)
 J = 230/208-1-50
 K = 220/240-1-50
 L = 230/200-3-60 (220/200-3-50)

Motor Protector B = Internal Line Break
 P = Pilot Duty - Solid State
 R = Pilot Duty - Solid State (2nd Generation)
 T = Pilot Duty - Internal Thermostat and External Sensing Elements

Motor Type A = PSC Permanent Split Capacitor
 B = CSR Capacitor Start/Cap. Run
 C = RSCR Resistance Start/Cap. Run
 D = AI 3 Phase-Across the Line
 E = CSIR Cap. Start/Induction Run

Capacity 183 = 18+3-0's = 18,000; 244 = 24+4-0's = 240,000 BTU/HR
 18U = 18+3-0's = 18,000 BTU/HR

Family A = Model A Reciprocating
 B = Model B Reciprocating
 C = Scroll (≤42K)
 D = Dual Compressor Application
 G = Model G Reciprocating
 R = Scroll (>42K)

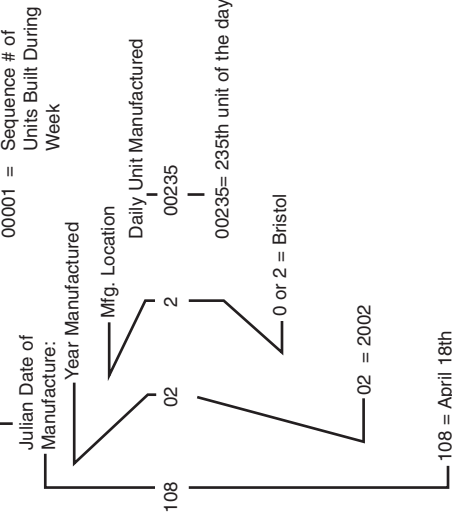
Generation B = Second Generation- No PRV (Except G series)
 D = Dual Compressor Application (Single & Interconnected)
 E = High Efficiency
 M = Alternate Pressure Relief Valve
 N = No Pressure Relief Valve (Except G series)
 O = Basic Standard Model
 P = Basic Standard Model- Upgrade Plus
 T = Second Generation - Basic Standard Model

Type of Refrigerant 1 = R12
 2 = R22
 4 = R134a

Refrigeration Application H = High Temperature
 M = Medium Temperature
 L = Low Temperature

Reciprocating Compressors Serial Number System
 Family
 Scroll Compressors Serial Number System

Example: S3702K00001
 S = Scroll Technologies
 37 = Production Week
 02 = Year
 K = State (Arkansas)
 00001 = Sequence # of Units Built During Week



00235 = 235th unit of the day
 0 or 2 = Bristol

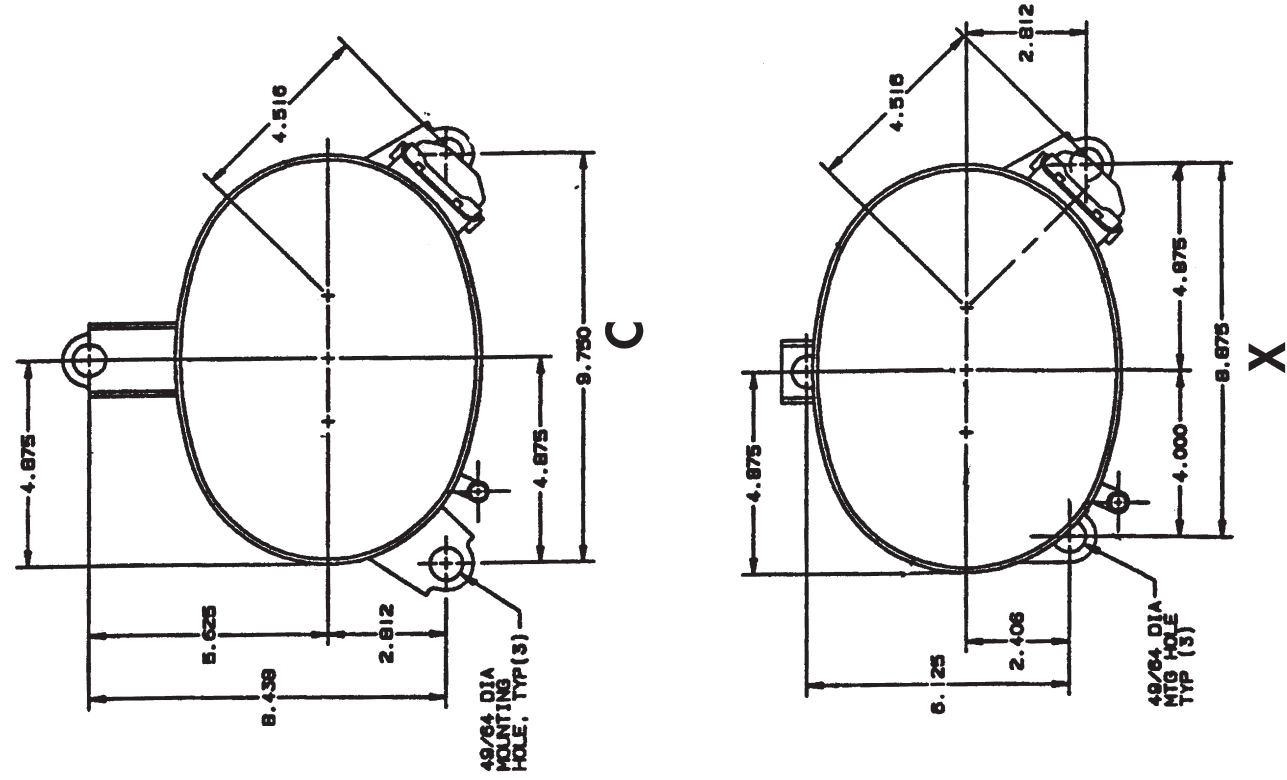
108 = April 18th

2 = Third Generation - Basic Standard Model
 3 = Fourth Generation - Basic Standard Model
 4 = Basic Standard Model - Improved Sound
 5 = Inertia Series - Standard Model
 6 = Inertia Series - Hi Efficiency Model
 7 = Inertia Series - Second Generation Hi Efficiency Model
 8 = Fifth Generation- Basic Standard Model Upgrade
 9 = Sixth Generation- Basic Standard Model Upgrade

5 = R502 or Alt. Replacement Refrigerant SUVA-HP-81 (Refrigerant R402B)
 6 = R404A (SUVA HP62)
 7 = R407C (SUVA AC9000 or KLEA 66) 8 = R410A

S = High Temperature (One Capacity / 1,2,3, or 4 cylinder) Half/Single
 T = High Temperature (Two Capacities / 2 or 4 cylinder)- Twin/Single

MOUNTING FEET CONFIGURATION



H89B SERIES (R410A)

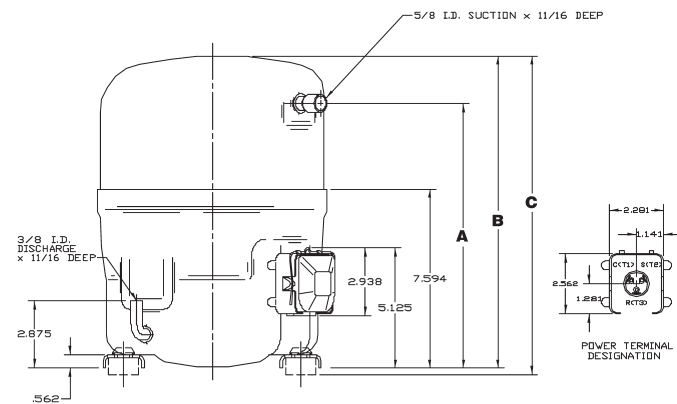
50 HZ

Model	@45/130				@45/100				@45/110				Electrical Data			Displacement	
	Capacity		Motor Input		Capacity		Motor Input		Capacity		Motor Input						
	BTU/H	WATTS	BTU/WH	W/W	BTU/H	WATTS	BTU/WH	W/W	BTU/H	WATTS	BTU/WH	W/W	RLA	LRA	MCC	IN ³ /REV	CM ³ /REV
220/200 VOLTS - 3 Phase																	
H89B183DBL	14900	4372	1610	9.3	2.7	22100	1310	16.9	19680	1439	13.7	6.5	60	11.0	1.56	25.47	
H89B243DBL	20675	6066	2225	9.3	2.7	29300	1715	17.1	26400	1915	13.8	7.7	60	13.0	1.91	31.29	
H89B283DBL	24650	7233	2590	9.5	2.8	33900	1985	17.1	31050	2180	14.2	9.7	82	16.0	2.18	35.71	
220/240 VOLTS - 1 Phase																	
H89B223ABH	18570	5449	1970	9.4	2.8	26540	1530	17.3	24020	1690	14.2	9.1	58	15.0	1.82	29.81	
H89B323ABH	27300	8010	2880	9.5	2.8	37375	2210	16.9	33950	2448	13.9	13.9	85	23.5	2.40	39.37	
H89B343ABH	29100	8538	3040	9.6	2.8	39500	2310	17.1	36000	2560	14.1	15.1	85	25.5	2.53	41.45	
380/415 VOLTS - 3 Phase																	
H89B183DBV	14900	4372	1610	9.3	2.7	22100	1310	16.9	19680	1439	13.7	6.5	60	11.0	1.56	25.47	
H89B203DBV	16800	4929	1775	9.5	2.8	24425	1385	17.6	22073	1533	14.4	3.3	31	5.7	1.68	27.55	
H89B243DBV	20675	6066	2225	9.3	2.7	29300	1715	17.1	26400	1915	13.8	3.8	31	6.5	1.91	31.29	
H89B283DBV	24650	7233	2590	9.5	2.8	33900	1985	17.1	31050	2180	14.2	4.3	42	8.0	2.18	35.71	
H89B303DBV	26300	7717	2760	9.5	2.8	35800	2100	17.0	32700	2300	14.2	4.7	42	8.4	2.30	37.63	
H89B343DBV	29125	8546	3070	9.5	2.8	39850	2350	17.0	36200	2610	13.9	5.4	42	9.5	2.53	41.45	
H89B363DBV	30430	8928	3190	9.5	2.8	41060	2430	16.9	37650	2671	14.1	5.8	42	9.5	2.62	42.92	

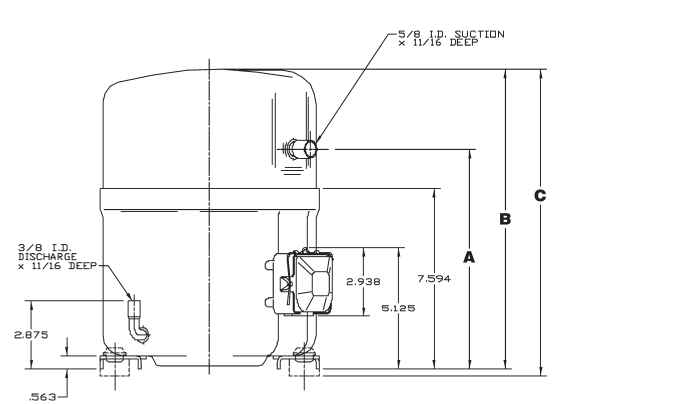
*Data Subject to Revision

B FAMILY

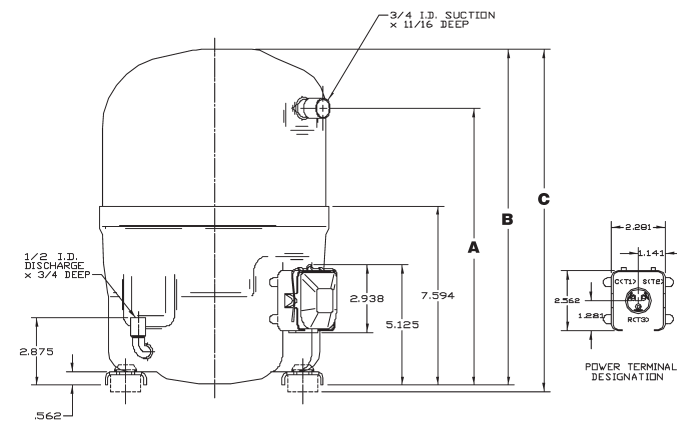
Diagrams



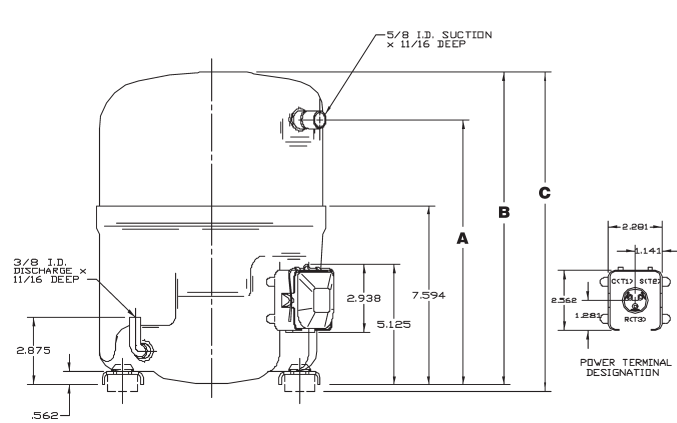
H23 & H73B



H24B



H25B, H26B, H27B



H29B & H79B

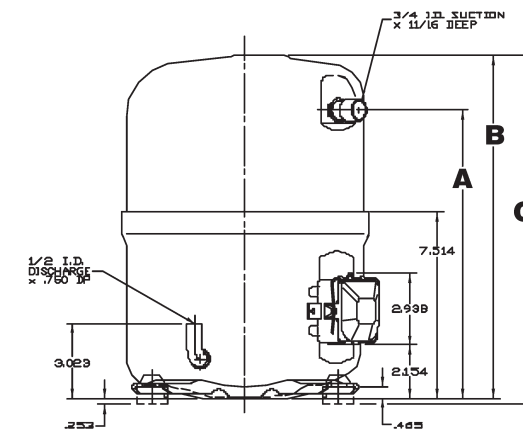
H89B SERIES (R410A)

50 HZ

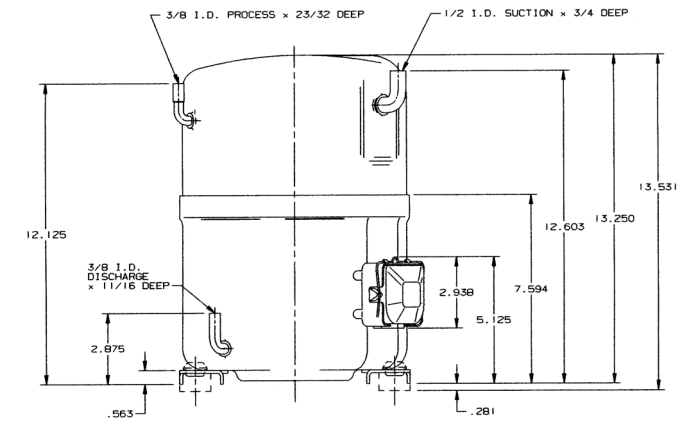
Model	Oil Charge		Weight				ELECTRICAL START COMPONENTS			DIMENSIONS						
							Run Capacitor	Start Capacitor	G.E. Relay	*DIAGRAMS FOUND ON PAGE 36						
	OZ	L	Net Lbs	Net Kg	Ship Lbs	Ship Kg	MFD/VOLTS	MFD/VOLTS	Relay	A IN	A MM	B IN	B MM	C IN	C MM	
220/200 VOLTS - 3 Phase																
H89B183DBL	40	1.2	67.0	30.5	70.0	31.8	-Not Req'd	-Not Req'd	-Not Req'd	11.1	282.6	13.3	338.4	13.6	344.8	
H89B243DBL	40	1.2	67.0	30.5	70.0	31.8	-Not Req'd	-Not Req'd	-Not Req'd	11.6	295.3	13.8	351.1	14.1	357.5	
H89B283DBL	40	1.2	73.5	33.4	76.5	34.8	-Not Req'd	-Not Req'd	-Not Req'd	11.6	295.3	13.8	351.1	14.1	357.5	
220/240 VOLTS - 1 Phase																
H89B223ABH	40	1.2	72.0	32.7	77.1	35.0	40/370	161-193/250	3ARR3*10AS*	11.6	295.4	13.8	351.3	14.1	357.6	
H89B323ABH	40	1.2	76.0	34.6	79.0	35.9	45/370	270-324/250	3ARR3*10AU*	12.1	308.0	14.3	363.8	14.6	370.1	
H89B343ABH	40	1.2	77.5	35.3	82.6	37.6	45/370	270-324/250	3ARR3*10AU*	12.1	308.0	14.3	363.8	14.6	370.1	
380/415 VOLTS - 3 Phase																
H89B183DBV	40	1.2	67.0	30.5	70.0	31.8	-Not Req'd	-Not Req'd	-Not Req'd	11.1	282.6	13.3	338.4	13.6	344.8	
H89B203DBV	40	1.2	67.0	30.5	70.0	31.8	-Not Req'd	-Not Req'd	-Not Req'd	11.1	282.6	13.3	338.4	13.6	344.8	
H89B243DBV	40	1.2	67.0	30.5	70.0	31.8	-Not Req'd	-Not Req'd	-Not Req'd	11.6	295.3	13.8	351.1	14.1	357.5	
H89B283DBV	40	1.2	73.5	33.4	76.5	34.8	-Not Req'd	-Not Req'd	-Not Req'd	11.6	295.3	13.8	351.1	14.1	357.5	
H89B303DBV	40	1.2	73.5	33.4	76.5	34.8	-Not Req'd	-Not Req'd	-Not Req'd	12.1	308.0	14.3	363.8	14.6	370.1	
H89B343DBV	40	1.2	73.5	33.4	76.5	34.8	-Not Req'd	-Not Req'd	-Not Req'd	12.1	308.0	14.3	363.8	14.6	370.1	
H89B363DBV	40	1.2	73.5	33.4	76.5	34.8	-Not Req'd	-Not Req'd	-Not Req'd	12.1	308.0	14.3	363.8	14.6	370.1	

B FAMILY

Diagrams



H89B



H2EB