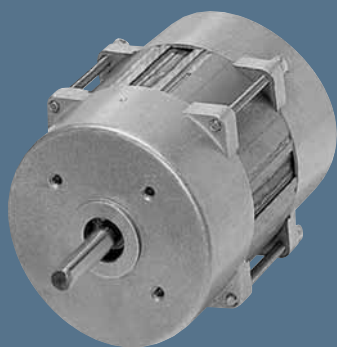


Capacitor motors

KM 43 closed



Standard version:

- Direction of rotation clockwise (see connection diagram)
symmetric winding, also suitable for counter-clockwise rotation
- Continuous operation S1
- Ball bearings
- Insulation class F(VDE/EN)

Nominal data	Number of poles	Output power	Input power	Nominal voltage	Frequency	Nominal speed	Nominal current	Rated torque	Capacitor	Mass	Dimensions (mm)		Curve
Type		W	W	V	Hz	rpm	mA	Ncm	μF*)	kg	a	b	
KM 4320/2-2..	2	26	55	230	50	2650	230	9	1,4	1,2	20	77	1
KM 4330/2-2..	2	32	70	230	50	2700	260	11	1,6	1,5	30	87	2
KM 4340/2-2..	2	42	80	230	50	2750	320	14	2,0	1,8	40	97	3
KM 4350/2-2..	2	56	100	230	50	2750	380	19	2,5	2,1	50	107	4
KM 4360/2-2..	2	77	120	230	50	2750	530	27	2,5	2,4	60	117	5
KM 4320/4-2..	4	12	35	230	50	1300	140	8	1,0	1,1	20	77	6
KM 4330/4-2..	4	17	40	230	50	1300	170	12	1,2	1,4	30	87	7
KM 4340/4-2..	4	18	45	230	50	1350	200	13	1,4	1,8	40	97	8
KM 4350/4-2..	4	22	50	230	50	1350	220	16	1,6	2,1	50	107	9
KM 4360/4-2..	4	28	70	230	50	1350	290	20	1,8	2,4	60	117	10

*) not supplied

