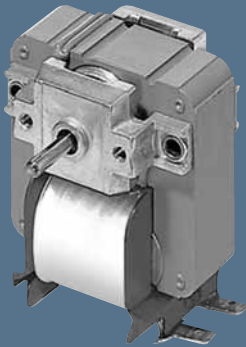


Shaded-pole motors

EM 25



Standard version:

- Direction of rotation clockwise
- Mounting position with horizontal shaft
- Mode of operation S1
- Sintered sleeve bearings with additional lubricant depot
- Permissible ambient temperature 0 – 60° C.

Nominal data	Output power	Input power	Nominal voltage	Frequency	Nominal speed	Nominal current	Rated torque	With/without cooling blades	Mass	Dimensions (mm)			Curve
	W	W	V	Hz	rpm	mA	Ncm		kg	a	b	c	
EM 2513	1,4	14	230	50	2300	135	0,55	without	0,40	13	42	35	1
EM 2513	1,8	16	230	50	2500	185	0,70	with	0,40	13	42	35	2
EM 2518	2,7	16	230	50	2500	150	1,05	without	0,50	18	47	40	3
EM 2518	3,7	23	230	50	2500	260	1,45	with	0,50	18	47	40	4
EM 2524	4,0	22	230	50	2600	200	1,55	without	0,60	24	53	46	5
EM 2524	6,2	30	230	50	2500	350	2,40	with	0,60	24	53	46	6

