

External-rotor motor

for agitating machines, size 068

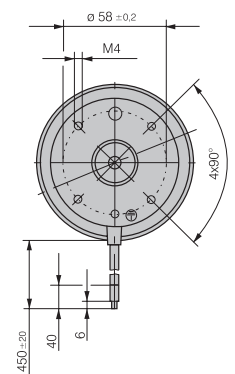
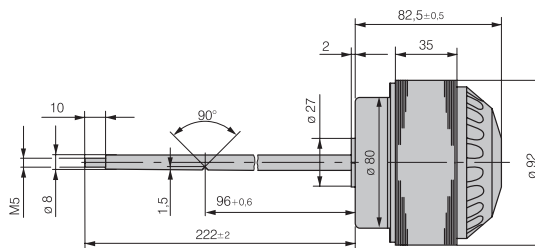
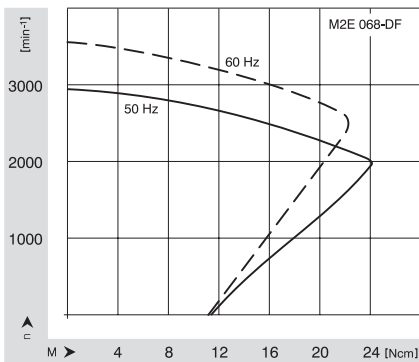


- Mounting flange in diecast aluminium
- Rotor stove-enamelled in black
- Shaft in stainless steel
- Maintenance-free ball bearings
- Direction of rotation clockwise, viewed on rotor
- Type of protection IP 44 when installed
(final evaluation has to be carried out in customer's application)
- CE Approval

ebm-papst • Mulfingen

Nominal Data	Voltage	Frequency	Speed	Power output	Power input	Input current	Capacitor	Starting torque	Torque	Temperature rise	approx. Mass
Type	VAC	Hz	min ⁻¹	W	W	A	mF/VDB	Ncm	Ncm	K	kg
M2E 068-DF 65 -03	230	50	2500	50	92	0.45	2.0 / 400	11.0	19.0	60	2.0
		60	3100	54	85	0.37	2.0 / 400	10.7	16.6	40	2.0
M4S 068-BF 08 -08	230	50	1200	5.8	28	0.18	—	2.5	4.6	55	1.1
		60	1400	5.3	25	0.16	—	1.5	3.6	45	1.1

Type M2E 068 -DF



Type M4S 068-BF

