

Caratteristiche tecniche

Technical features

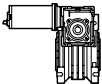
Le caratteristiche principali dei motoriduttori a corrente continua della serie ECMM sono:

The main features of ECMM DC gearmotor range are:

- Alimentazione in bassa tensione 12/24Vcc
- Possibilità di montaggio encoder
- Potenze motore disponibili da 100 a 800W S2
- Magneti in ferrite
- Carcasa in pressofusione di alluminio nelle grandezze 026, 030, 040, 050, 063, 075, 090 e 110. La grandezza 130 è costruita con carcassa in ghisa
- Lubrificazione permanente con olio sintetico
- Low voltage power supply 12/24Vdc
- Suitable for encoder assembly
- Motor power ratings available from 100 up to 800W S2
- Ferrite magnets
- Die cast aluminium housing on sizes 026, 030, 040, 050, 063, 075, 090 and 110. Cast iron housing on size 130
- Permanent synthetic oil long life lubrication

Designazione

Classification

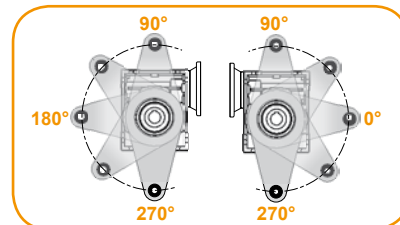
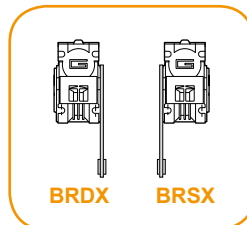
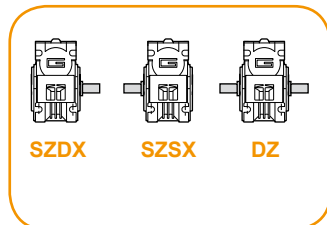
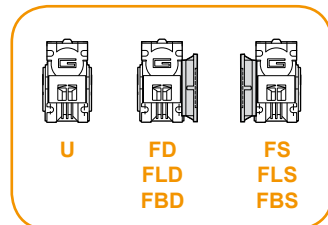
MOTORIDUTTORE / GEARMOTOR														
ECMM	100/026/026					U	150	SZDX	BRSX	90	B3	UB1	120	VS1
Tipo Type	Grandezza Size					Versione Version	Rapporto Ratio	Albero di uscita Output shaft	Braccio di reazione Torque arm	Angolo Angle	Pos. di montaggio Mounting position	Esecuzione di montaggio Mounting execution	Versione motore Motor version	Opzioni Options
	070/026/026	100/026/026	180/026/040	250/030/040	350/030/040	U	vedi tabelle	SZDX SZSX DZ	BRDX BRSX	0° 90° 180° 270°	B3 B8 B6 B7 V5 V6	UB1 UB2 US1 US2 UV1 UV2 UC1 UC2	120 240 24E	VS1 VS2
	070/026/030	100/026/030	180/026/050	250/030/050	350/030/050	FD								
	070/026/040	100/026/040	180/030/040	250/030/063	350/030/063	FS								
	070/026/050	100/026/050	180/030/050	250/040/075	350/040/075	FLD								
	070/030/040	100/030/040	180/030/063	250/040/090	350/040/090	FLS								
	070/030/050	100/030/050	180/040/075	250/050/110	350/050/110	FBD								
	070/030/063	100/030/063	180/040/090		350/063/130	FBS								
	070/040/075	100/040/075	180/050/110											
	070/040/090	100/040/090												
					600/040/075									
				600/040/090										
				600/050/110										
				600/063/130										

Versione Riduttore
Gearbox Version

Albero di uscita
Output shaft

Braccio di reazione
Torque arm

Angolo
Angle



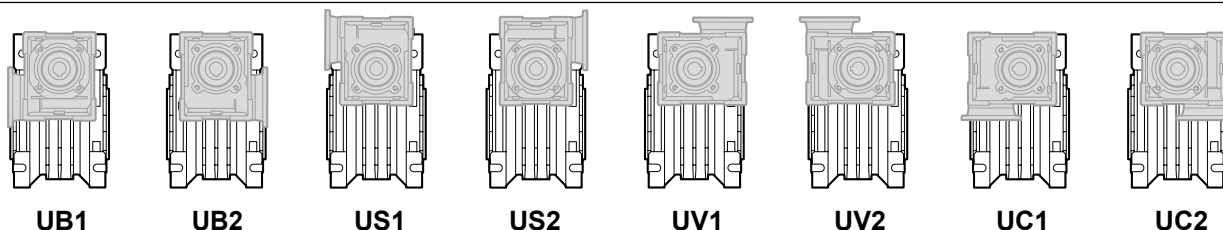
Simbologia

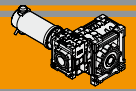
Symbols

n_1 [min ⁻¹]	Velocità in ingresso / Input speed	M_2 [Nm]	Coppia in uscita in funzione di P_1 / Output torque referred to P_1
n_2 [min ⁻¹]	Velocità in uscita / Output speed	sf	Fattore di servizio / Service factor
i	Rapporto di riduzione / Ratio	R_2 [N]	Carico radiale ammissibile in uscita / Permitted output radial load
P_1 [kW]	Potenza in entrata / Input power	A_2 [N]	Carico assiale ammissibile in uscita / Permitted output axial load

Esecuzioni di montaggio

Mounting executions





Combinazioni rapporti

Combination ratio

CMM 026/026 - CMM 026/030 - CMM 026/040 - CMM 026/050												
i (i ₁ x i ₂)												
	150	225	300	450	600	900	1200	1500	1800	2400	3000	3600
i ₁	10	15	10	15	20	30	40	50	60	60	60	60
i ₂	15	15	30	30	30	30	30	30	30	40	50	60

CMM 030/040 - CMM 030/050 - CMM 030/063 - CMM 040/075 - CMM 040/090 - CMM 050/110 - CMM 063/130																
i (i ₁ x i ₂)																
	75	100	150	200	250	300	400	500	600	750	900	1200	1500	1800	2400	3000
i ₁	7.5	10	10	10	10	10	10	10	20	25	30	40	50	60	60	60
i ₂	10	10	15	20	25	30	40	50	30	30	30	30	30	30	40	50

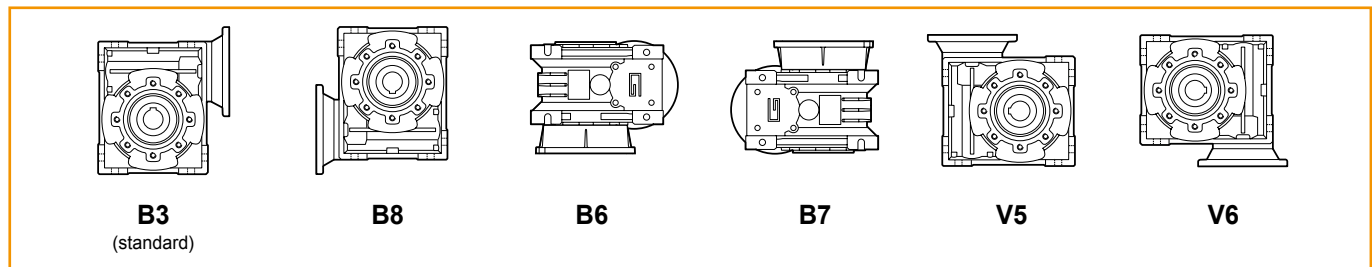
Lubrificazione

Lubrication

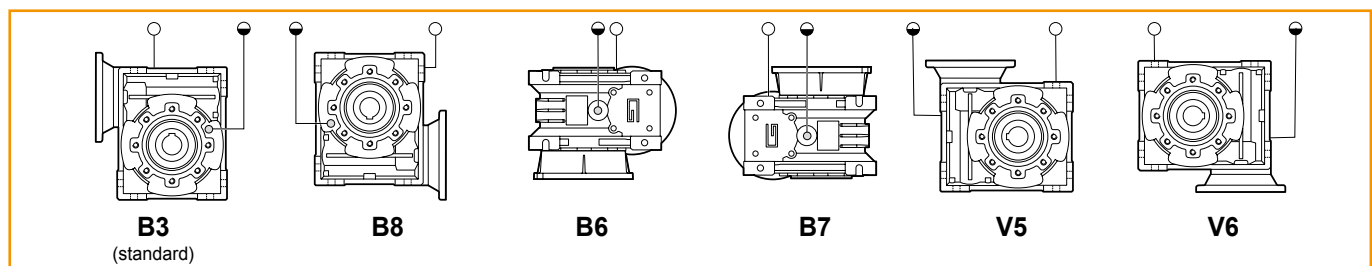
	CMM											
	026/026	026/030	026/040	026/050	030/040	030/050	030/063	040/075	040/090	050/110	063/130	
①	026			030			040		050		063	
Lubrificazione a vita / Life lubricated												
②	026	030	040	050	040	050	063	075	090	110	130	
Lubrificazione a vita / Life lubricated												

Posizioni di montaggio / Mounting positions

CM 026-030-040-050-063-075-090-110



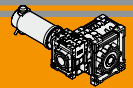
CM 130



○ Sfiato e tappo di riempimento / Breather and filling plug
● Livello olio / Oil level plug

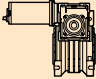
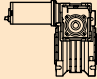
	Quantità di olio (litri) / Oil quantity (litres)					
	B3	B8	B6	B7	V5	V6
CM026				0.02		
CM030				0.03		
CM040				0.07		
CM050				0.1		
CM063				0.25		
CM075				0.4		
CM090				0.7		
CM110				1.1		
CM130	4.5	3.3	3.5	3.5	4.5	3.3

Lubrificati a vita
Life Lubrication

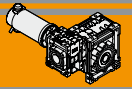


Dati tecnici per servizio S2

Technical data for S2 duty

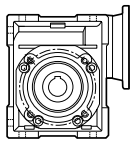
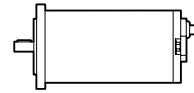
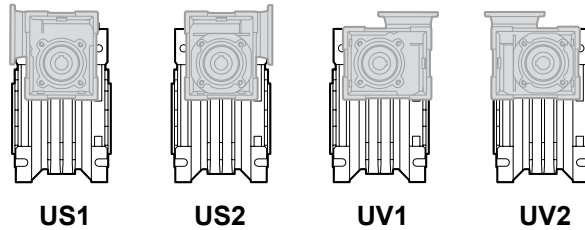
P_1 [W]	n_2 [min ⁻¹]	M_2 [Nm]	sf	i		Versione motore Motor version	P_1 [W]	n_2 [min ⁻¹]	M_2 [Nm]	sf	i		Versione motore Motor version		
350							350								
(3000 min ⁻¹)	7.5	204	0.7	400	ECMM 250/030/050	120/240	(3000 min ⁻¹)	6.0	301	3.8	500	ECMM 250/050/110	120/240		
	6.0	125	1.0	500											
	5.0	162	1.0	600											
	4.0	162	1.0	750											
	3.3	162	1.0	900											
	2.5	135	1.0	1200											
	2.00	162	1.0	1500											
	30.0	74	3.9	100			ECMM 250/030/063	120/240		5.0	378			3.9	600
	20.0	103	3.0	150											
	15.0	129	2.0	200											
	12.0	152	1.5	250											
	10.0	173	1.8	300											
	7.5	208	1.2	400											
	6.0	241	1.0	500											
	5.0	327	0.9	600											
	4.0	393	0.8	750											
	3.3	448	0.7	900											
	2.5	260	1.0	1200											
	2.00	310	1.0	1500											
	15.0	134	3.2	200	ECMM 250/040/075	120/240				4.0	393	0.8	750		
	12.0	161	2.4	250											
	10.0	184	2.8	300											
	7.5	222	1.9	400											
	6.0	258	1.5	500											
	5.0	351	1.5	600											
	4.0	423	1.2	750											
	3.3	489	1.0	900											
	2.5	590	0.7	1200											
	2.0	730	0.7	1500											
	1.7	511	1.0	1800											
	1.3	432	1.0	2400											
	1.0	378	1.0	3000											
	12.0	168	3.9	250			ECMM 250/040/090	120/240		3.3	448	0.7	900		
	10.0	193	4.6	300											
	7.5	238	3.2	400											
	6.0	278	2.3	500											
	5.0	368	2.4	600											
	4.0	444	2.0	750											
	3.3	512	1.7	900											
	2.5	631	1.2	1200											
	2.00	765	1.1	1500											
	1.67	878	1.0	1800											
	1.25	1082	0.7	2400											
	1.00	635	1.0	3000											
										40.0	78	1.1	75	ECMM 350/030/040	120/240
										30.0	101	0.8	100		
										20.0	87	1.0	150		
								15.0	74	1.0	200				
								12.0	67	1.0	250				
								10.0	90	1.0	300				
								7.5	74	1.0	400				
								40.0	79	2.0	75	ECMM 350/030/050	120/240		
								30.0	103	1.5	100				
								20.0	146	1.1	150				
								15.0	184	0.7	200				
								12.0	216	0.6	250				
								10.0	235	0.7	300				
								7.5	135	1.0	400				
								6.0	125	1.0	500				
								5.0	162	1.0	600				
								4.0	162	1.0	750				
								3.3	162	1.0	900				
								40.0	80	3.6	75			ECMM 350/030/063	120/240
								30.0	104	2.8	100				
								20.0	144	2.1	150				
								15.0	181	1.4	200				
								12.0	213	1.1	250				
								10.0	243	1.3	300				
								7.5	292	0.9	400				
								6.0	338	0.7	500				
								5.0	458	0.7	600				
								4.0	310	1.0	750				
								3.3	310	1.0	900				
								2.5	260	1.0	1200				
								2.0	310	1.0	1500				

Nota: Verificare sempre che la coppia M2 utilizzata non ecceda il valore indicato nelle caselle in grigio
Note: Please check that the output torque M2 does not exceed the value into the grey areas



Motori applicabili

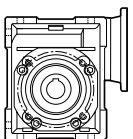
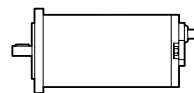
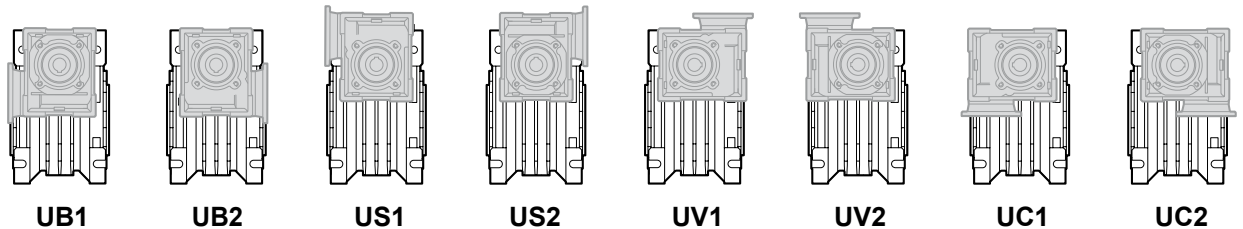
IEC Motor adapters



		EC			
		070.120 070.240	100.120 100.240	100.24E	180.120 180.240
CMM	026/026	150 - 3600	150 - 3600	150 - 3600	150 - 3600

150 - 3600

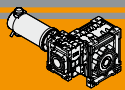
Rapporti di riduzione i
Ratio i



		EC							
		070.120 070.240	100.120 100.240	100.24E	180.120 180.240	180.24E	250.120 250.240	350.120 350.240	600.120 600.240
CMM	026/030	150 - 3600	150 - 3600	150 - 3600	150 - 3600				
	026/040	150 - 3600	150 - 3600	150 - 3600	150 - 3600				
	026/050	150 - 3600	150 - 3600	150 - 3600	150 - 3600				
	030/040	75 - 3000	75 - 3000	75 - 3000	75 - 3000	75 - 1500	75 - 1500	75 - 1500	
	030/050	75 - 3000	75 - 3000	75 - 3000	75 - 3000	75 - 1500	75 - 1500	75 - 1500	
	030/063	75 - 3000	75 - 3000	75 - 3000	75 - 3000	75 - 1500	100 - 1500	75 - 1500	
	040/075	75 - 3000	75 - 3000	75 - 3000	75 - 3000	75 - 3000	200 - 3000	75 - 3000	75 - 1200
	040/090	75 - 3000	75 - 3000	75 - 3000	75 - 3000	75 - 3000	250 - 3000	75 - 3000	75 - 1200
	050/110				1200 - 3000	75 - 3000	500 - 3000	75 - 3000	75 - 3000
	063/130							75 - 3000	75 - 3000

150 - 3600

Rapporti di riduzione i
Ratio i

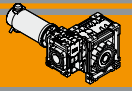


Dimensioni

Dimensions

CMM..U - CMM..F - CMM..FB - CMM..FL																	
	A	C	D _{H8}	E	F	G	G1	H	H1	I	I1	K	L	M	N _{H8}	N1	N2
030/040	70	100	18	121.5	43	55	78	50	40	40	30	60	71	75	60	36.5	29
030/050	80	120	25	144	49	55	92	60	40	50	30	70	85	85	70	43.5	29
030/063	100	144	25	174	67	55	112	72	40	63	30	85	104	95	80	53	29
040/075	120	172	28	205	72	70	120	86	50	75	40	90	112	115	95	57	36.5
040/090	140	208	35	238	74	70	140	103	50	90	40	100	130	130	110	67	36.5
050/110	170	252.5	42	295	—	80	155	127.5	60	110	50	115	144	165	130	74	43.5
063/130	200	292.5	45	335	—	95	170	147.5	72	130	63	120	155	215	180	81	53

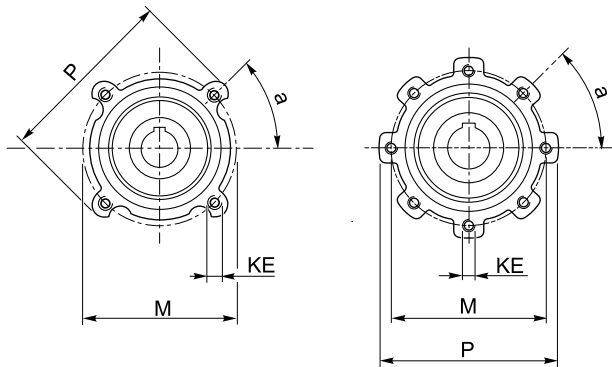
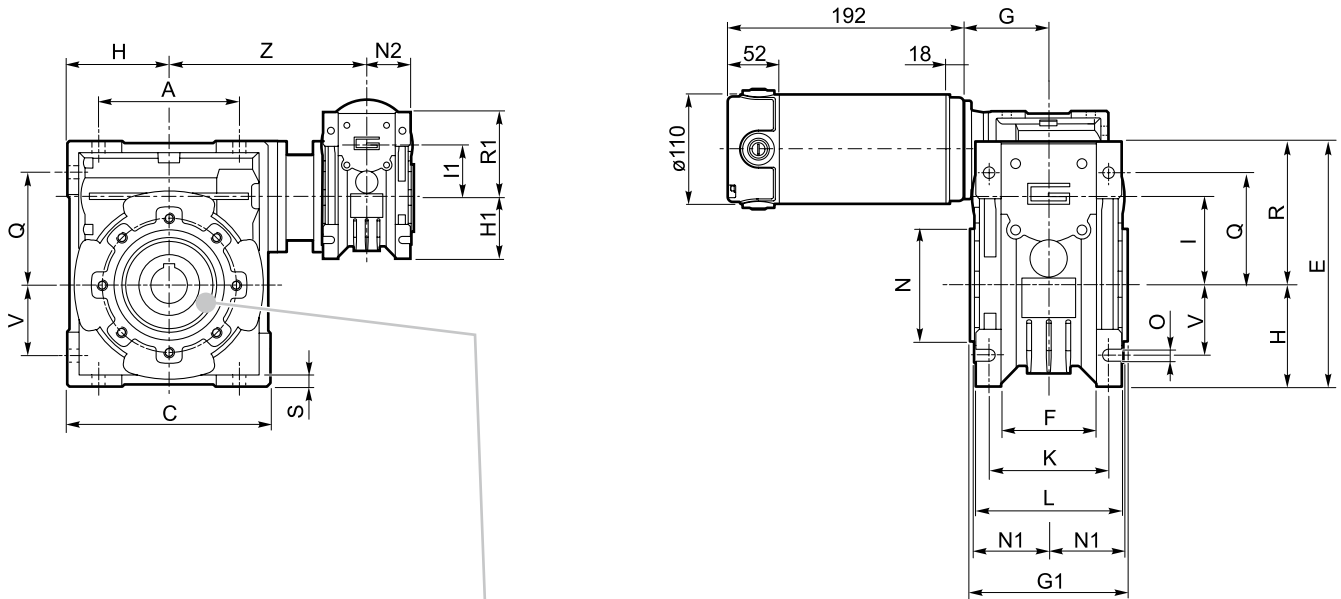
CMM..U - CMM..F - CMM..FB - CMM..FL															
	O	P	Q	R	R1	S	T	V	Z	KE	a	b	t	Kg	
030/040	6.5	87	55	71.5	57	6.5	26	35	122	M6x8(n.4)	45°	6	20.8	9.2	
030/050	8.5	98	64	84	57	7	30	40	132	M8x10(n.4)	45°	8	28.3	10.3	
030/063	8.5	110	80	102	57	8	36	50	145	M8x10(n.8)	45°	8	28.3	12.3	
040/075	11	140	93	119	71.5	10	40	60	165	M8x14(n.8)	45°	8	31.3	17.3	
040/090	13	160	102	135	71.5	11	45	70	182	M10x18(n.8)	45°	10	38.3	20.9	
050/110	14	200	125	167.5	84	14	50	85	225	M10x18(n.8)	45°	12	45.3	35.5	
063/130	16	250	140	187.5	102	15	60	100	245	M12x21(n.8)	45°	14	48.8	60.3	



Dimensioni

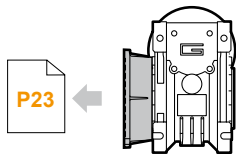
Dimensions

ECMM350/...U

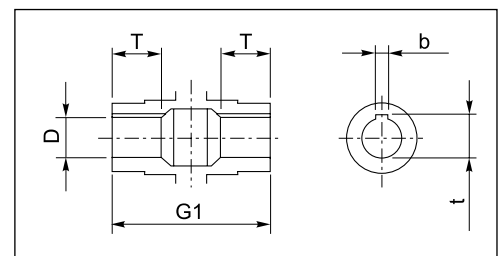


..030/040 ..030/050

..030/063 ..040/075
..040/090 ..050/110
..063/130



ECMM350/... F
ECMM350/... FL
ECMM350/... FB



Albero lento cavo / Hollow output shaft