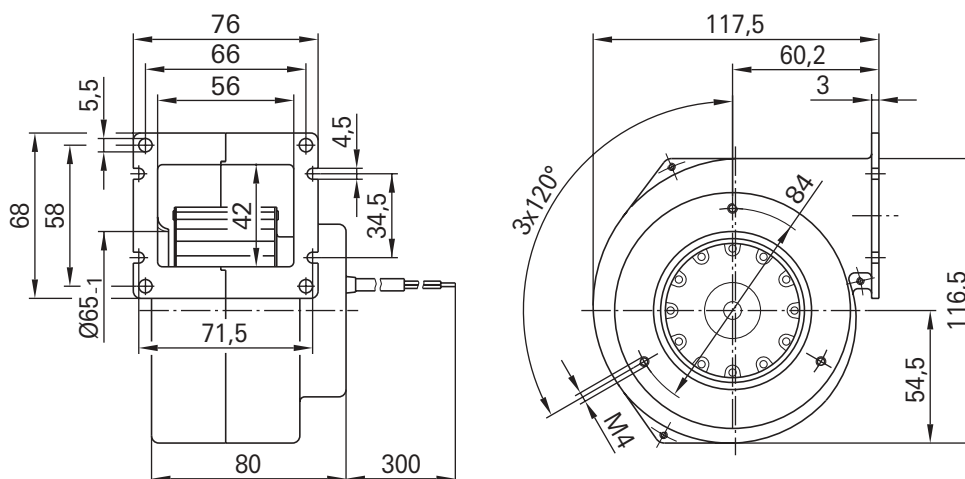


Radialgebläse Ø 076 / 085, einseitig saugend

Centrifugal blowers Ø 076 / 085, single inlet



| Typ / type | Motor / motor |
|-------------|---------------|
| G2S 076 -AA | M2S040 -BE |
| G2E 085 -AA | M2E042 -CA |
| G2S 085 -AA | M2S040 -BE |

Material material

Spiralgehäuse:
Aluminium Druckguss
Lüfterrad:
sendzimirverzinktes Stahlblech

scroll housing:
die-cast aluminium
impeller:
galvanised sheet steel

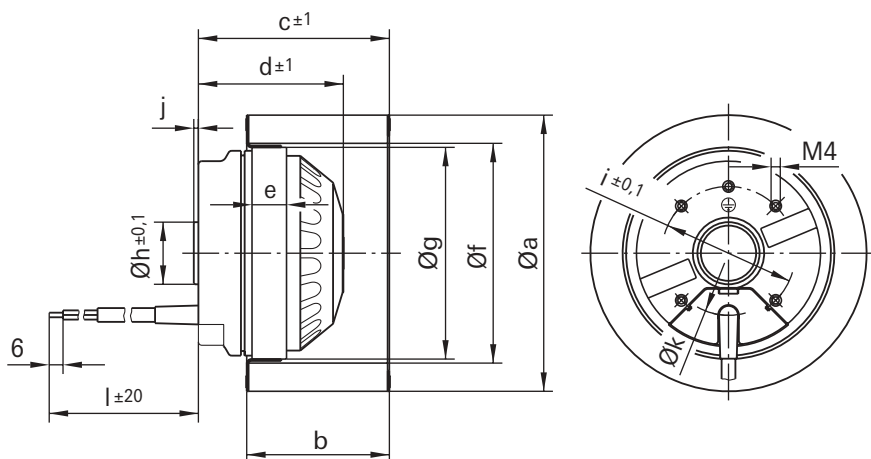
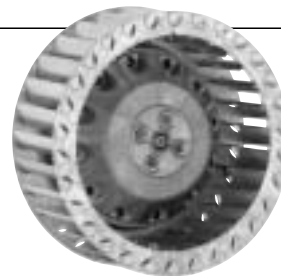
| Typ type | Spannung voltage VAC | Frequenz frequency Hz | Luftfördermenge air volume m³/h | Drehzahl speed min ⁻¹ | Leistungsaufnahme power input W | Stromaufnahme current draw A | Kondensator capacitor µF/VDB | Geräuschpegel noise level dBA | Einsetzbar ab operating from Pa | Zul. Umgeb. temp. perm. amb. temp. °C | Masse ca. approx. mass kg |
|--|----------------------------|-----------------------------|---------------------------------------|--|---------------------------------------|------------------------------------|------------------------------------|-------------------------------------|---------------------------------------|---|---------------------------------|
| G2S 076 -AA03-01 R2S 076 -AA03-05⁽²⁾ | 230 | 50 60 | 65 48 | 2100 1550 | 24 22 | 0,13 0,12 | --- --- | 47 39 | 0 0 | 40 40 | 0,7 0,5 |
| G2E 085 -AA01-01⁽¹⁾ R2E 085 -AA01-05⁽¹⁾ | 230 | 50 60 | 80 95 | 2350 2800 | 32 30 | 0,15 0,14 | 1,0 / 400 1,0 / 400 | 53 57 | 0 0 | 60 70 | 0,9 0,7 |
| G2S 085 -AA03-01 R2S 085 -AA03-05⁽²⁾ | 230 | 50 60 | 62 45 | 1800 1400 | 25 23 | 0,14 0,13 | --- --- | 51 38 | 0 0 | 40 40 | 0,8 0,6 |

⁽¹⁾ FPU (P2) Kondensator vorgeschrieben nach IEC 252 / FPU (P2) capacitor in keeping with IEC 252 regulation

⁽²⁾ Schutzart IP 20 / type of protection IP 20

Radialventilatoren Ø 076 / 085, einseitig saugend

Centrifugal fans Ø 076 / 085, single inlet



| Typ / type | Motor / motor | a | b | c | d | e | f | g | h | i | j | k | l |
|------------|---------------|----|----|----|----|-----|----|-----|-----|----|-----|----|-----|
| R2S 076-AA | M2S040-BE | 78 | 34 | 68 | 40 | --- | 62 | --- | --- | 47 | --- | 35 | 300 |
| R2E 085-AA | M2E042-CA | 85 | 42 | 68 | 57 | 20 | 67 | 59 | 17 | 47 | 2 | 30 | 300 |
| R2S 085-AA | M2S040-BE | 85 | 42 | 68 | 40 | --- | 67 | --- | --- | 47 | --- | 35 | 300 |

| Typ type | [Hz] | n [min ⁻¹] | P ₁ [W] |
|-------------|------|---------------------------|-----------------------|
| *2S 076-AA | 50 | 1 2320 | 23 |
| | | 2 2590 | 20 |

| Typ type | [Hz] | n [min ⁻¹] | P ₁ [W] |
|-------------|------|---------------------------|-----------------------|
| *2E 085-AA | 50 | 1 2430 | 32 |
| | | 2 2590 | 30 |
| *2S 085-AA | 50 | 1 2050 | 24 |
| | | 2 2460 | 20 |

