



# H7BG SERIES (R407C)

## 60 HZ

Model	@45/130				@45/100			@45/110			Electrical Data RLA LRA MCC			Displacement IN <sup>3</sup> /REV CM <sup>3</sup> /REV		
	Capacity BTU/H WATTS		Motor Input WATTS	EER/COP BTU/WH W/W	Capacity BTU/H	Motor Input WATTS	EER BTU/WH	Capacity BTU/H	Motor Input WATTS	EER BTU/WH						
	<b>230/208 VOLTS - 3 Phase</b>															
H7BG104DBD	91948	26979	9154	10.0	2.9	130835	7632	17.1	114207	8218	13.9	29.3	166	45.0	11.63	190.50
H7BG124DBD	107491	31540	10982	9.8	2.9	156617	9400	16.7	135056	9993	13.5	36.0	205	56.0	13.40	219.51
<b>460 VOLTS - 3 Phase</b>																
H7BG094DBE	79985	23469	7792	10.3	3.0	125015	6555	19.1	107878	7286	14.8	12.3	72	19.0	10.22	167.40
H7BG104DBE	93469	27426	9337	10.0	2.9	141961	7637	18.6	123011	8556	14.4	14.6	87	22.0	11.63	190.50
H7BG124DBE	109026	31991	11261	9.7	2.8	165599	9294	17.8	143328	10359	13.8	17.8	85	25.0	13.40	219.51

# H7BG SERIES (R407C)

## 50 HZ

<b>220/200 VOLTS - 3 Phase</b>																
H7BG104DBD	74678	21912	7444	10.0	2.9	114589	6353	18.0	97065	6761	14.4	29.0	170	42.6	11.63	190.50
H7BG124DBD	88455	25955	9056	9.8	2.9	130496	7735	16.9	112295	8250	13.6	36.0	215	51.0	13.40	219.51
<b>380/415 VOLTS - 3 Phase</b>																
H7BG094DBE	66654	19558	6493	10.3	3.0	104179	5463	19.1	89898	6072	14.8	12.0	72	18.0	10.22	167.40
H7BG104DBE	77891	22855	7781	10.0	2.9	118301	6364	18.6	102509	7130	14.4	14.2	77	20.2	11.63	190.50
H7BG124DBE	90855	26659	9385	9.7	2.8	137999	7745	17.8	119440	8632	13.8	16.5	80	25.0	13.40	219.51

# H7NG SERIES (R407C)

## 60 HZ

<b>230/208 VOLTS - 3 Phase</b>																
H7NG204FRD	187976	55156	18999	9.9	2.9	274859	16163	17.0	239731	17287	13.9	60.0	282	98.0	23.26	380.98
H7NG294FPD	254374	74639	27710	9.2	2.7	364648	24286	15.0	320596	25415	12.6	87.7	400	138	31.02	508.11
<b>460 VOLTS - 3 Phase</b>																
H7NG184DPE	165689	48617	15963	10.4	3.0	253217	13084	19.4	221958	14650	15.2	25.9	117	40.0	20.44	334.79
H7NG204DRE	190256	55825	18651	10.2	3.0	289648	15403	18.8	254942	17213	14.8	30.0	141	49.0	23.26	380.98
H7NG244DRE	223238	65503	22398	10.0	2.9	329836	18801	17.5	287970	20737	13.9	36.6	180	56.0	26.80	439.00
H7NG294DPE	254374	74639	27710	9.2	2.7	364648	24286	15.0	320596	25415	12.6	43.9	200	69.0	31.02	508.11

# H7NG SERIES (R407C)

## 50 HZ

<b>220/200 VOLTS - 3 Phase</b>																
H7NG204FRD	153689	45096	15305	10.0	2.9	234250	13046	18.0	200881	13919	14.4	62.0	225	98.0	23.30	381.65
H7NG294FPD	210620	61800	23090	9.1	2.7	312674	19861	15.7	268957	21096	12.7	90.5	450	138	31.02	508.11
<b>380/415 VOLTS - 3 Phase</b>																
H7NG184DPE	138074	40514	13303	10.4	3.0	211014	10904	19.4	184965	12208	15.2	26.0	125	40.0	20.44	334.79
H7NG204DRE	158547	46521	15542	10.2	3.0	241373	12836	18.8	212452	14344	14.8	30.0	150	49.0	23.26	380.98
H7NG244DRE	186032	54586	18665	10.0	2.9	274864	15668	17.5	239975	17281	13.9	36.5	190	56.0	26.80	439.00
H7NG294DPE	211978	62199	23092	9.2	2.7	303873	20239	15.0	267163	21179	12.6	44.0	215	69.0	31.02	508.11

\*Data Subject to Revision

# H7BG SERIES (R407C)

## 60 HZ

Model	Oil Charge OZ L		Weight Net Ship Lbs Kg Lbs Kg				ELECTRICAL START COMPONENTS			DIMENSIONS *DIAGRAMS FOUND ON PAGE 88					
							Run Capacitor MFD/VOLTS	Start Capacitor MFD/VOLTS	G.E. Relay	A		B		C	
	IN	MM	IN	MM	IN	MM									
<b>230/208 VOLTS - 3 Phase</b>															
H7BG104DBD	96	2.8	144	65.5	153	69.5	-Not Req'd	-Not Req'd	-Not Req'd	9	228.4	18.3	465.5	18.7	473.6
H7BG124DBD	96	2.8	146	66.4	155	70.5	-Not Req'd	-Not Req'd	-Not Req'd	9	228.4	18.3	465.5	18.7	473.6
<b>460 VOLTS - 3 Phase</b>															
H7BG094DBE	96	2.8	128	58.2	138	62.7	-Not Req'd	-Not Req'd	-Not Req'd	9	228.4	17.6	446.4	17.9	454.6
H7BG104DBE	96	2.8	144	65.5	153	69.5	-Not Req'd	-Not Req'd	-Not Req'd	9	228.4	18.3	465.5	18.7	473.6
H7BG124DBE	96	2.8	146	66.4	155	70.5	-Not Req'd	-Not Req'd	-Not Req'd	9	228.4	18.3	465.5	18.7	473.6

# H7BG SERIES (R407C)

## 50 HZ

<b>220/200 VOLTS - 3 Phase</b>															
H7BG104DBD	96	2.8	144	65.5	153	69.5	-Not Req'd	-Not Req'd	-Not Req'd	9	228.4	18.3	465.5	18.7	473.6
H7BG124DBD	96	2.8	146	66.4	155	70.5	-Not Req'd	-Not Req'd	-Not Req'd	9	228.4	18.3	465.5	18.7	473.6
<b>380/415 VOLTS - 3 Phase</b>															
H7BG094DBE	96	2.8	128	58.2	138	62.7	-Not Req'd	-Not Req'd	-Not Req'd	9	228.4	17.6	446.4	17.9	454.6
H7BG104DBE	96	2.8	144	65.5	153	69.5	-Not Req'd	-Not Req'd	-Not Req'd	9	228.4	18.3	465.5	18.7	473.6
H7BG124DBE	96	2.8	146	66.4	155	70.5	-Not Req'd	-Not Req'd	-Not Req'd	9	228.4	18.3	465.5	18.7	473.6

# H7NG SERIES (R407C)

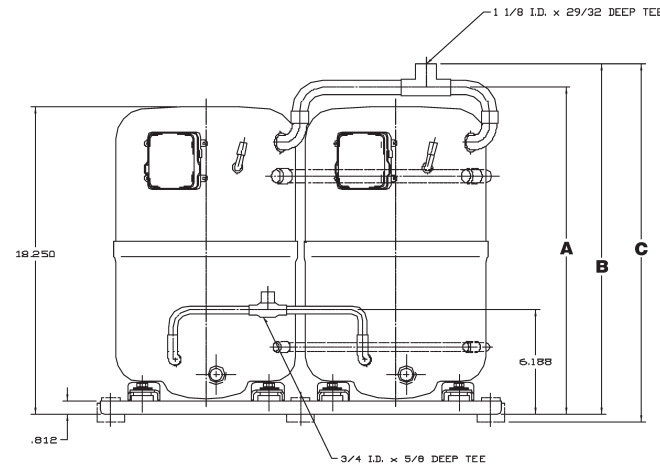
## 60 HZ

<b>230/208 VOLTS - 3 Phase</b>															
H7NG204FRD	224	6.6	248	112.7	260	118.2	-Not Req'd	-Not Req'd	-Not Req'd	11.8	299.5	21.8	552.0	22.4	568.8
H7NG294FPD	224	6.6	268	121.8	280	127.3	-Not Req'd	-Not Req'd	-Not Req'd	11.8	299.5	21.8	552.0	22.4	568.8
<b>460 VOLTS - 3 Phase</b>															
H7NG184DPE	224	6.6	241	109.5	253	115.0	-Not Req'd	-Not Req'd	-Not Req'd	11.8	299.5	21.8	552.0	22.4	568.8
H7NG204DRE	224	6.6	248	112.7	260	118.2	-Not Req'd	-Not Req'd	-Not Req'd	11.8	299.5	21.8	552.0	22.4	568.8
H7NG244DRE	224	6.6	247	112.3	269	122.3	-Not Req'd	-Not Req'd	-Not Req'd	11.8	299.5	21.8	552.0	22.4	568.8
H7NG294DPE	224	6.6	268	121.8	280	127.3	-Not Req'd	-Not Req'd	-Not Req'd	11.8	299.5	21.8	552.0	22.4	568.8

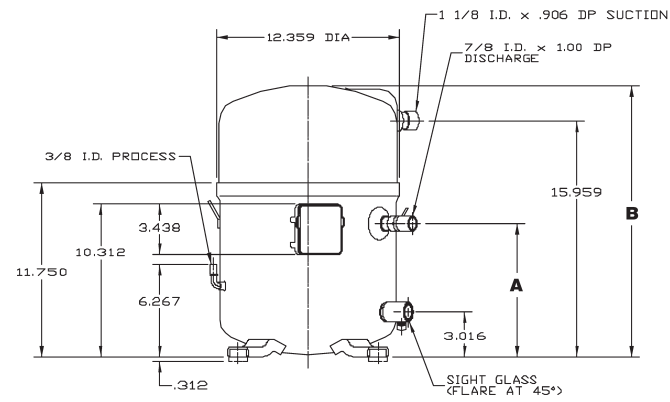
# H7NG SERIES (R407C)

## 50 HZ

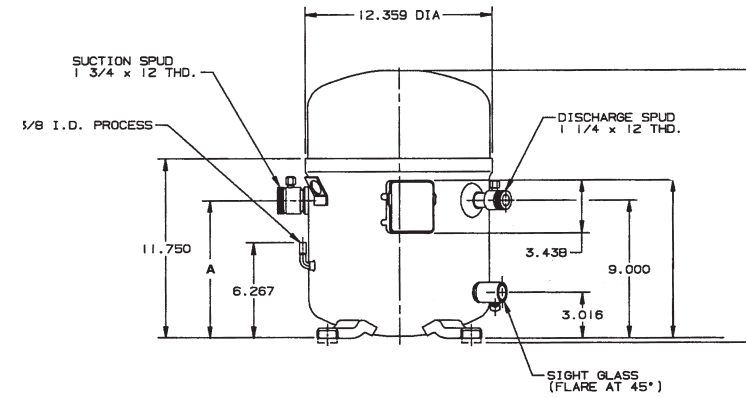
<b>220/200 VOLTS - 3 Phase</b>															
H7NG204FRD	224	6.6	248	112.7	260	118.2	-Not Req'd	-Not Req'd	-Not Req'd	11.8	299.5	21.8	552.0	22.4	568.8
H7NG294FPD	224	6.6	268	121.8	280	127.3	-Not Req'd	-Not Req'd	-Not Req'd	11.8	299.5	21.8	552.0	22.4	568.8
<b>380/415 VOLTS - 3 Phase</b>															
H7NG184DPE	224	6.6	241	109.5	253	115.0	-Not Req'd	-Not Req'd	-Not Req'd	11.8	299.5	21.8	552.0	22.4	568.8
H7NG204DRE	224	6.6	248	112.7	260	118.2	-Not Req'd	-Not Req'd	-Not Req'd	11.8	299.5	21.8	552.0	22.4	568.8
H7NG244DRE	224	6.6	257	116.8	269	122.3	-Not Req'd	-Not Req'd	-Not Req'd	11.8	299.5	21.8	552.0	22.4	568.8
H7NG294DPE	224	6.6	268	121.8	280	127.3	-Not Req'd	-Not Req'd	-Not Req'd	11.8	299.5	21.8	552.0	22.4	568.8



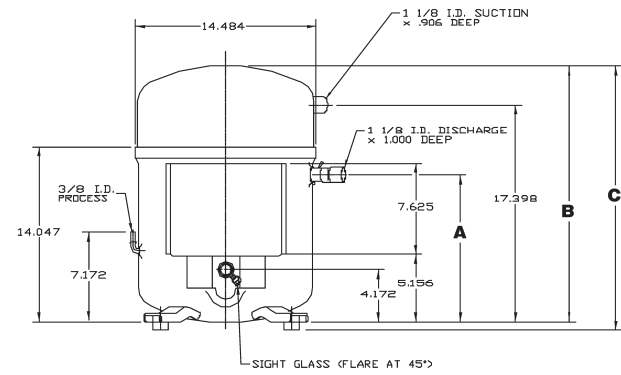
**H25D**



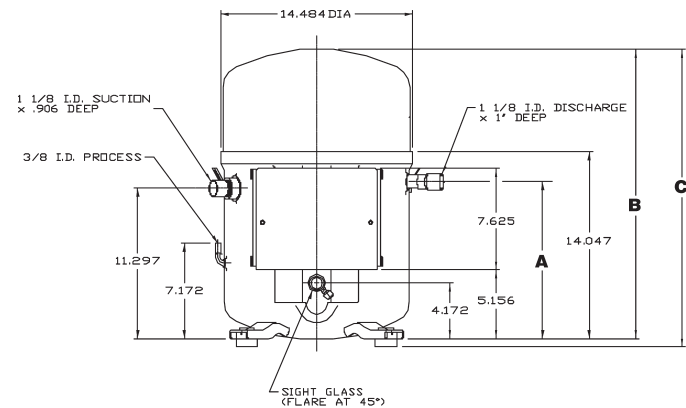
**H25G & H75G**  
(094-144)



**H2BG & H7BG**



**H25G & H75G**  
(184-294)



**H2NG & H7NG**  
(184-294)