

COMPRESSOR MODEL NUMBER SYSTEM

H 2 9 B 18 U A B C A
 Mounting Feet Dim A = 7.5 x 7.5 B = 4.8 x 8.0 C = 8.4 x 9.8 D = 6.12 x 8.0 E = 9.5 x 9.5
 F = 10.5 x 10.5 H = 7.5 x 21.5 J = 7.5 x 22.5 X = 8.8 x 6.1
 Electrical Characteristics A = 115-1-60
 B = 230-1-60
 C = 230/208-1-60
 D = 230/208-3-60 (220/200-3-50)
 E = 460-3-60 (380/415-3-50)
 F = 575-3-60 (500-3-50)
 G = 200-1-60
 H = 265-1-60 (220/240-1-50)
 J = 230/208-1-50
 K = 220/240-1-50
 L = 230/200-3-60 (220/200-3-50)

Motor Protector B = Internal Line Break
 P = Pilot Duty - Solid State
 R = Pilot Duty - Solid State (2nd Generation)
 T = Pilot Duty - Internal Thermostat and External Sensing Elements

Motor Type A = PSC Permanent Split Capacitor
 B = CSR Capacitor Start/Cap. Run
 C = RSCR Resistance Start/Cap. Run
 D = AI 3 Phase-Across the Line
 E = CSIR Cap. Start/Induction Run

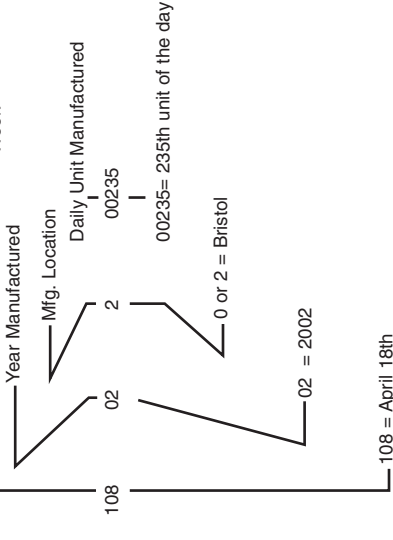
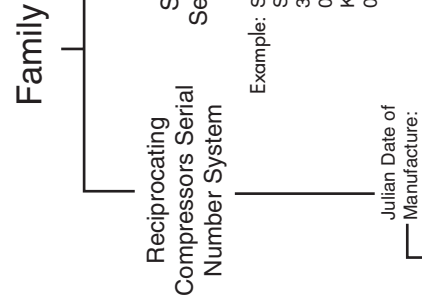
Capacity 183 = 18+3-0's = 18,000; 244 = 24+4-0's = 240,000 BTU/HR
 18U = 18+3-0's = 18,000 BTU/HR

Family A = Model A Reciprocating
 B = Model B Reciprocating
 C = Scroll (≤42K)
 D = Dual Compressor Application
 G = Model G Reciprocating
 R = Scroll (>42K)

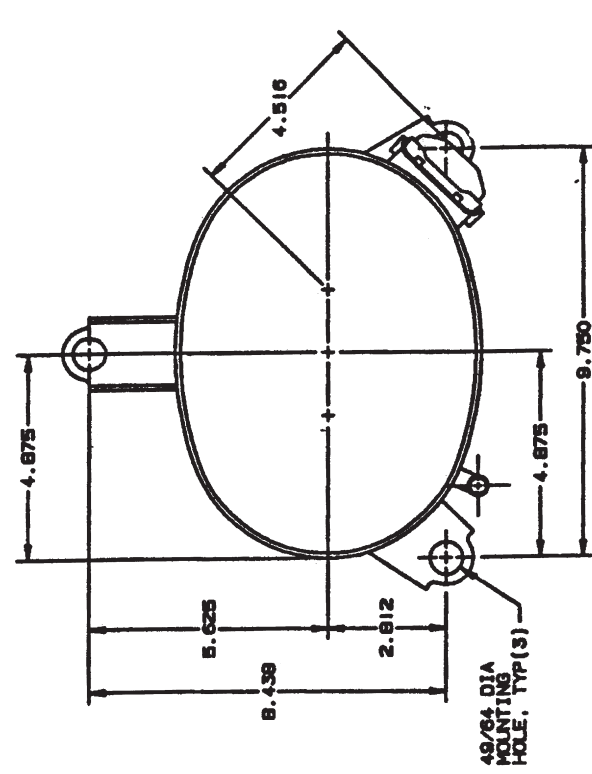
Generation B = Second Generation- No PRV (Except G series)
 D = Dual Compressor Application (Single & Interconnected)
 E = High Efficiency
 M = Alternate Pressure Relief Valve
 N = No Pressure Relief Valve (Except G series)
 O = Basic Standard Model
 P = Basic Standard Model- Upgrade Plus
 T = Second Generation - Basic Standard Model
 2 = Third Generation - Basic Standard Model
 3 = Fourth Generation - Basic Standard Model
 4 = Basic Standard Model - Improved Sound
 5 = Inertia Series - Standard Model
 6 = Inertia Series - Hi Efficiency Model
 7 = Inertia Series - Second Generation Hi Efficiency Model
 8 = Fifth Generation- Basic Standard Model Upgrade
 9 = Sixth Generation- Basic Standard Model Upgrade

Type of Refrigerant 1 = R12
 2 = R22
 4 = R134a
 5 = R502 or Alt. Replacement Refrigerant SUVA-HP-81 (Refrigerant R402B)
 6 = R404A (SUVA HP62)
 7 = R407C (SUVA AC9000 or KLEA 66) 8 = R410A

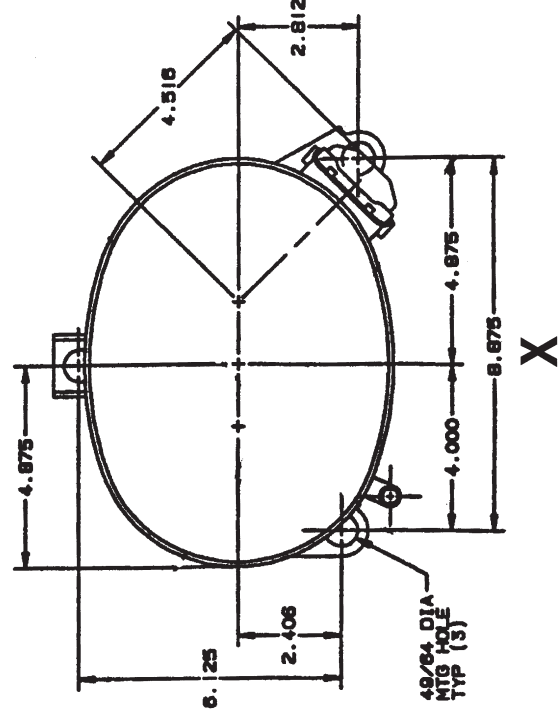
Refrigeration Application H = High Temperature
 M = Medium Temperature
 L = Low Temperature
 S = High Temperature (One Capacity / 1,2,3, or 4 cylinder) Half/Single
 T = High Temperature (Two Capacities / 2 or 4 cylinder)- Twin/Single



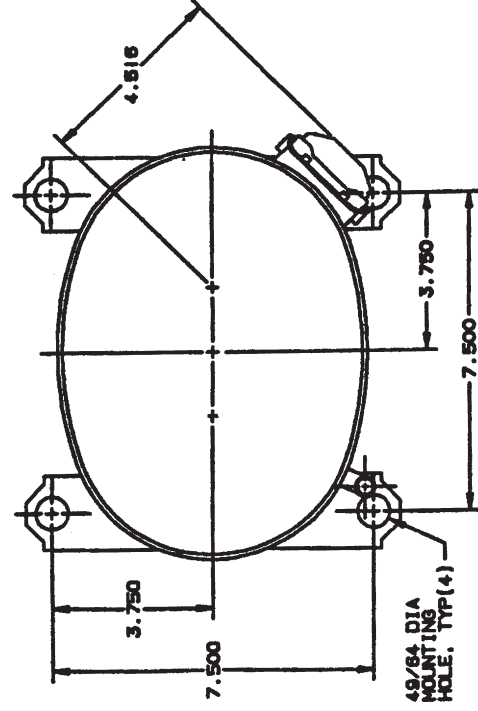
MOUNTING FEET CONFIGURATION



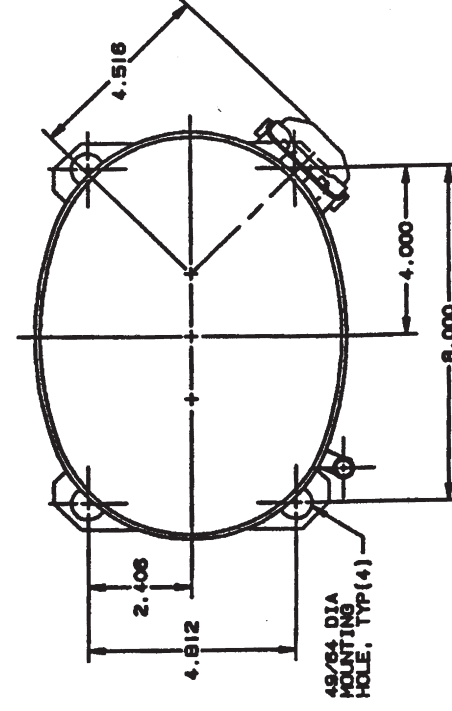
C



X



A



B

H75G SERIES (R407C)

60 HZ

Model	@45/130						@45/100			@45/110			Electrical Data RLA LRA MCC			Displacement IN ³ /REV CM ³ /REV	
	Capacity BTU/H WATTS		Motor Input WATTS	EER/COP BTU/WH W/W		Capacity BTU/H	Motor Input WATTS	EER BTU/WH	Capacity BTU/H	Motor Input WATTS	EER BTU/WH						
460/380 VOLTS - 3 Phase																	
H75G204DPV	185768	54508	17751	10.5	3.1	275972	15306	18.0	237926	16183	14.7	29.7	181	55.0	23.26	380.98	
H75G244DPV	216852	63629	20876	10.4	3.0	315646	18100	17.4	273462	19076	14.3	38.5	279	67.0	26.80	439.00	
H75G294DPV	256627	75300	26213	9.8	2.9	368645	23459	15.7	320691	24441	13.1	42.1	250	70.0	31.02	508.11	
460 VOLTS - 3 Phase																	
H75G094DBE	79985	23469	7792	10.3	3.0	125015	6555	19.1	107878	7286	14.8	12.7	95	20.5	10.22	167.40	
H75G124DBE	107851	31646	10221	10.6	3.1	160284	8472	18.9	140557	9441	14.9	17.0	130	33.0	12.61	206.57	
H75G144DBE	141100	41400	13980	10.1	3.0	137300	11240	12.2	167950	12157	13.8	21.6	138	34.5	15.05	246.50	

H75G SERIES (R407C)

50 HZ

380/415 VOLTS - 3 Phase																	
H75G094DBE	66654	19558	6493	10.3	3.0	104179	5463	19.1	89898	6072	14.8	12.6	95	20.5	10.22	167.40	
H75G124DBE	89876	26372	8517	10.6	3.1	133570	7060	18.9	117131	7867	14.9	17.0	130	33.0	12.61	206.57	
H75G144DBE	107258	31472	10765	10.0	2.9	164385	9365	17.6	139949	10131	13.8	21.6	126	34.5	15.05	246.47	
H75G204DPV	154807	45424	14792	10.5	3.1	229976	12755	18.0	198271	13486	14.7	28.2	170	51.0	23.26	380.98	
H75G244DPV	180710	53024	17397	10.4	3.0	263038	15083	17.4	227885	15896	14.3	36.3	290	53.0	26.80	439.00	
H75G294DPV	213856	62750	21844	9.8	2.9	307204	19549	15.7	267243	20367	13.1	40.4	258	61.0	31.02	508.11	

H2BG SERIES

60 HZ

230/208 VOLTS - 3 Phase																	
H2BG094DBD	88700	26026	8580	10.3	3.0	118016	6912	17.1	108684	7517	14.5	24.0	145	40.0	10.22	167.40	
H2BG104DBD	103900	30486	10025	10.4	3.0	130782	8057	16.2	121853	8774	13.9	29.3	166	45.0	11.63	190.50	
H2BG124DBD	121500	35651	12030	10.1	3.0	156344	9923	15.8	144193	10668	13.5	36.0	205	56.0	13.40	219.49	
460 VOLTS - 3 Phase																	
H2BG094DBE	88700	26026	8580	10.3	3.0	118016	6912	17.1	108684	7517	14.5	12.3	72	19.0	10.22	167.40	
H2BG104DBE	103900	30486	10025	10.4	3.0	130782	8057	16.2	121853	8774	13.9	14.6	87	22.0	11.63	190.50	
H2BG124DBE	119000	34917	12010	9.9	2.9	118445	6946	17.1	108273	7600	14.2	17.0	85	25.0	13.40	219.49	
575 VOLTS - 3 Phase																	
H2BG094DBF	88200	25879	8600	10.3	3.0	118500	6950	17.1	108300	7600	14.3	10.0	60	14.5	10.22	167.42	
H2BG124DBF	119000	34916	12050	9.9	2.9	156900	9800	16.0	143100	10700	13.4	13.4	66	20.0	13.40	219.52	

H2BG SERIES

50 HZ

220/200 - 3 Phase																	
H2BG094DBD	72400	21244	7020	10.3	3.0	114231	6707	17.0	103663	7219	14.4	23.7	145	34.5	10.22	167.40	
H2BG104DBD	84390	24762	8155	10.3	3.0	114231	6707	17.0	103663	7219	14.4	29.0	175	42.6	11.63	190.50	
H2BG124DBD	100000	29342	9800	10.2	3.0	130286	8167	16.0	119852	8807	13.6	36.0	215	51.0	13.40	219.49	
380/415 - 3 Phase																	
H2BG094DBE	72400	21244	7020	10.3	3.0	100323	5789	17.3	89966	6186	14.5	12.0	72	18.0	10.22	167.40	
H2BG104DBE	84390	24762	8155	10.3	3.0	114231	6707	17.0	103663	7219	14.4	14.2	77	20.2	11.63	190.50	
H2BG124DBE	97000	28462	9790	9.9	2.9	126417	8058	15.7	116292	8689	13.4	16.5	80	25.0	13.40	219.49	

H75G SERIES (R407C)

60 HZ

Model	Oil Charge OZ L		Weight Net Ship Lbs Kg Lbs Kg				ELECTRICAL START COMPONENTS			DIMENSIONS *DIAGRAMS FOUND ON PAGE 88					
							Run Capacitor MFD/VOLTS	Start Capacitor MFD/VOLTS	G.E. Relay	A		B		C	
	IN	MM	IN	MM	IN	MM	IN	MM	IN	MM	IN	MM			
460/380 VOLTS - 3 Phase															
H75G204DPV	224	6.6	248	112.7	260	118.2	-Not Req'd	-Not Req'd	-Not Req'd	11.8	299.5	20.8	527.1	21.4	543.9
H75G244DPV	224	6.6	257	116.8	269	122.3	-Not Req'd	-Not Req'd	-Not Req'd	11.8	299.2	21.8	552.5	22.4	569.3
H75G294DPV	224	6.6	268	121.8	280	127.3	-Not Req'd	-Not Req'd	-Not Req'd	11.8	299.2	21.8	552.5	22.4	569.3
460 VOLTS - 3 Phase															
H75G094DBE	96	2.8	146	66.4	155	70.5	-Not Req'd	-Not Req'd	-Not Req'd	9.0	228.4	18.3	465.5	18.7	473.6
H75G124DBE	96	2.8	164	74.5	173	78.6	-Not Req'd	-Not Req'd	-Not Req'd	9.0	228.4	20.3	516.0	20.6	524.1
H75G144DBE	96	2.8	167.0	76.0	176.0	80.1	-Not Req'd	-Not Req'd	-Not Req'd	9.0	228.3	20.6	522.1	20.9	530.2

H75G SERIES (R407C)

50 HZ

380/415 VOLTS - 3 Phase															
H75G094DBE	96	2.8	146	66.4	155	70.5	-Not Req'd	-Not Req'd	-Not Req'd	9.0	228.4	18.3	465.5	18.7	473.6
H75G124DBE	96	2.8	164	74.5	173	78.6	-Not Req'd	-Not Req'd	-Not Req'd	9.0	228.4	20.3	516.0	20.6	524.1
H75G144DBE	96	2.8	167	75.9	176	80.0	-Not Req'd	-Not Req'd	-Not Req'd	9.0	228.4	20.6	522.3	20.9	530.4
H75G204DPV	224	6.6	248	112.7	260	118.2	-Not Req'd	-Not Req'd	-Not Req'd	11.8	299.5	20.8	527.1	21.4	543.9
H75G244DPV	224	6.6	257	116.8	269	122.3	-Not Req'd	-Not Req'd	-Not Req'd	11.8	299.5	21.8	552.5	22.4	569.3
H75G294DPV	224	6.6	268	121.8	280	127.3	-Not Req'd	-Not Req'd	-Not Req'd	11.8	299.5	21.8	552.5	22.4	569.3

H2BG SERIES

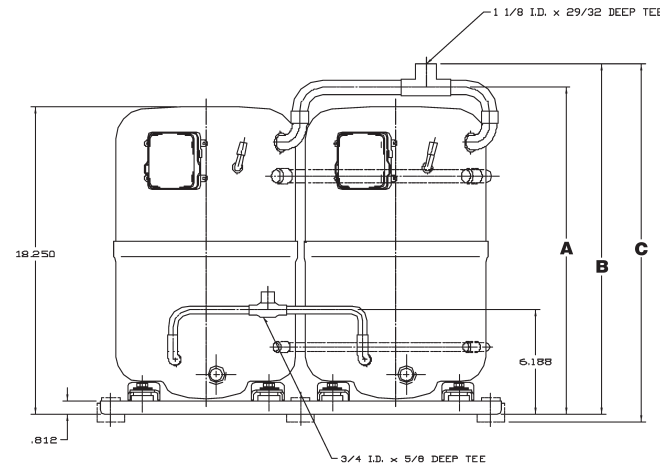
60 HZ

230/208 VOLTS - 3 Phase															
H2BG094DBD	96	2.8	128	58.2	138	62.7	-Not Req'd	-Not Req'd	-Not Req'd	9	228.4	17.6	446.4	17.9	454.6
H2BG104DBD	96	2.8	144	65.5	153	69.5	-Not Req'd	-Not Req'd	-Not Req'd	9	228.4	18.3	465.5	18.7	473.6
H2BG124DBD	96	2.8	146	66.4	155	70.5	-Not Req'd	-Not Req'd	-Not Req'd	9	228.4	18.3	465.5	18.7	473.6
460 VOLTS - 3 Phase															
H2BG094DBE	96	2.8	128	58.2	138	62.7	-Not Req'd	-Not Req'd	-Not Req'd	9	228.4	17.6	446.4	17.9	454.6
H2BG104DBE	96	2.8	144	65.5	153	69.5	-Not Req'd	-Not Req'd	-Not Req'd	9	228.4	18.3	465.5	18.7	473.6
H2BG124DBE	96	2.8	146	66.4	155	70.5	-Not Req'd	-Not Req'd	-Not Req'd	9	228.4	18.3	465.5	18.7	473.6
575 VOLTS - 3 Phase															
H2BG094DBF	96	2.8	128.0	58.2	138.0	62.8	-Not Req'd	-Not Req'd	-Not Req'd	9.0	228.3	17.6	446.3	17.9	454.4
H2BG124DBF	96	2.8	146.0	66.4	155.0	70.5	-Not Req'd	-Not Req'd	-Not Req'd	9.0	228.3	18.3	465.3	18.7	473.4

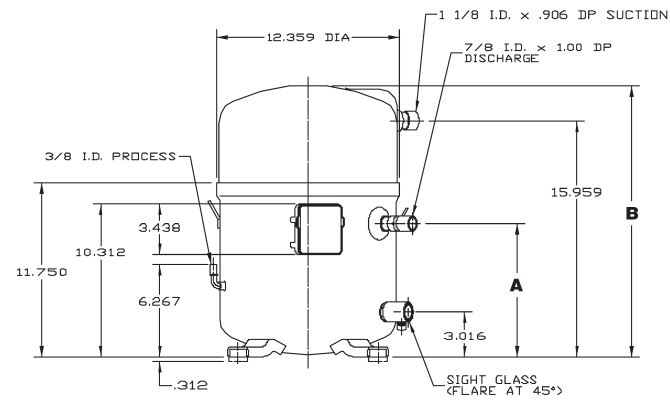
H2BG SERIES

50 HZ

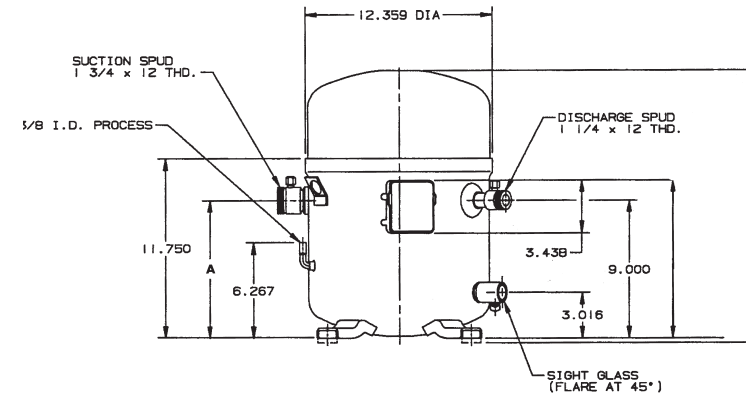
220/200 VOLTS - 3 Phase															
H2BG094DBD	96	2.8	128	58.2	138	62.7	-Not Req'd	-Not Req'd	-Not Req'd	9	228.4	17.6	446.4	17.9	454.6
H2BG104DBD	96	2.8	144	65.5	153	69.5	-Not Req'd	-Not Req'd	-Not Req'd	9	228.4	18.3	465.5	18.7	473.6
H2BG124DBD	96	2.8	146	66.4	155	70.5	-Not Req'd	-Not Req'd	-Not Req'd	9	228.4	18.3	465.5	18.7	473.6
380/415 VOLTS - 3 Phase															
H2BG094DBE	96	2.8	128	58.2	138	62.7	-Not Req'd	-Not Req'd	-Not Req'd	9	228.4	17.6	446.4	17.9	454.6
H2BG104DBE	96	2.8	144	65.5	153	69.5	-Not Req'd	-Not Req'd	-Not Req'd	9	228.4	18.3	465.5	18.7	473.6
H2BG124DBE	96	2.8	146	66.4	155	70.5	-Not Req'd	-Not Req'd	-Not Req'd	9	228.4	18.3	465.5	18.7	473.6



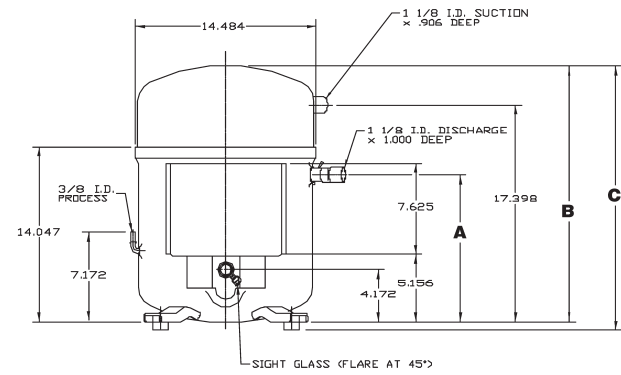
H25D



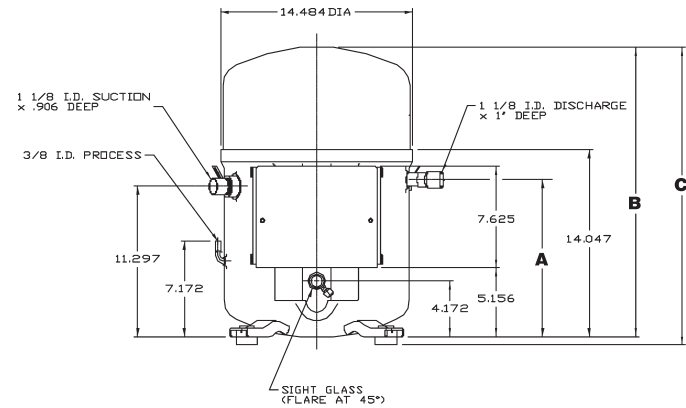
H25G & H75G
(094-144)



H2BG & H7BG



H25G & H75G
(184-294)



H2NG & H7NG
(184-294)