

COMPRESSOR MODEL NUMBER SYSTEM

H 2 9 B 18 U A B C A

Mounting Feet Dim A = 7.5 x 7.5 B = 4.8 x 8.0 C = 8.4 x 9.8 D = 6.12 x 8.0 E = 9.5 x 9.5
 F = 10.5 x 10.5 H = 7.5 x 21.5 J = 7.5 x 22.5 X = 8.8 x 6.1

Electrical Characteristics A = 115-1-60 M = 220/200-3-50
 B = 230-1-60 N = 380/415-3-50
 C = 230/208-1-60 P = 240/200-1-50
 D = 230/208-3-60 (220/200-3-50) T = 208-1-60
 E = 460-3-60 (380/415-3-50) U = 220/380-3-60
 F = 575-3-60 (500-3-50) V = 460/380-3-60 (380/415-3-50)
 G = 200-1-60 W = 380/460-3-60
 H = 265-1-60 (220/240-1-50) X = 380-3-60
 J = 230/208-1-50 Y = 230/208-3-60 (No 50 Hz)
 K = 220/240-1-50 Z = 380/415-3-50 Hz
 L = 230/200-3-60 (220/200-3-50)

Motor Protector B = Internal Line Break
 P = Pilot Duty - Solid State
 R = Pilot Duty - Solid State (2nd Generation)
 T = Pilot Duty - Internal Thermostat and External Sensing Elements

Motor Type A = PSC Permanent Split Capacitor F = PWS 3 Phase-Part Winding Start
 B = CSR Capacitor Start/Cap. Run G = 3 Phase 2/4/Pole (2 Speed)
 C = RSCR Resistance Start/Cap. Run J = 1 Phase 2/4 Pole (2 Speed)
 D = AI 3 Phase-Across the Line K = 3 Phase-Dual Voltage
 E = CSIR Cap. Start/Induction Run L = 3 Phase - WYE DELTA

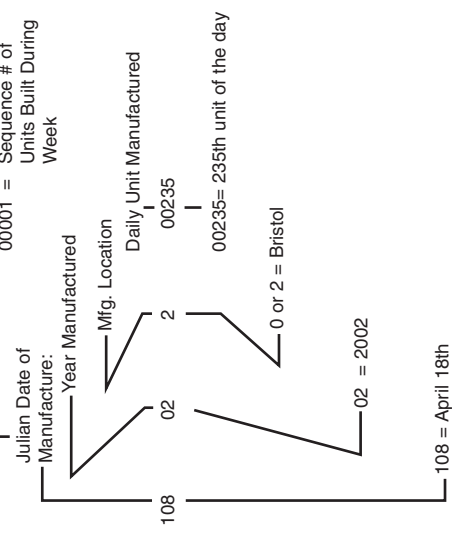
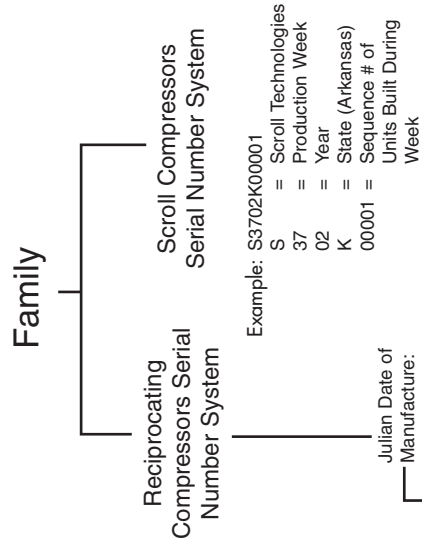
Capacity 183 = 18+3-0's = 18,000; 244 = 24+4-0's = 240,000 BTU/HR
 18U = 18+3-0's = 18,000 BTU/HR

Family A = Model A Reciprocating G = Model G Reciprocating
 B = Model B Reciprocating R = Scroll (>42K)
 C = Scroll (≤42K)
 D = Dual Compressor Application

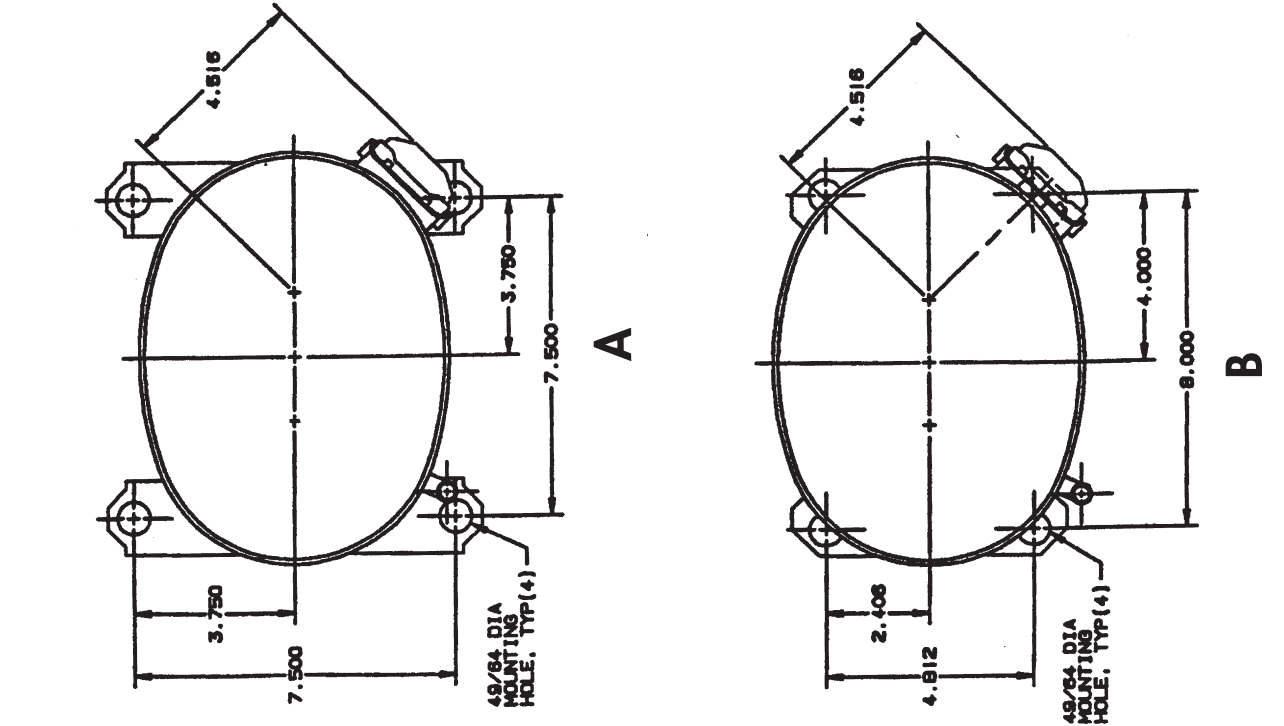
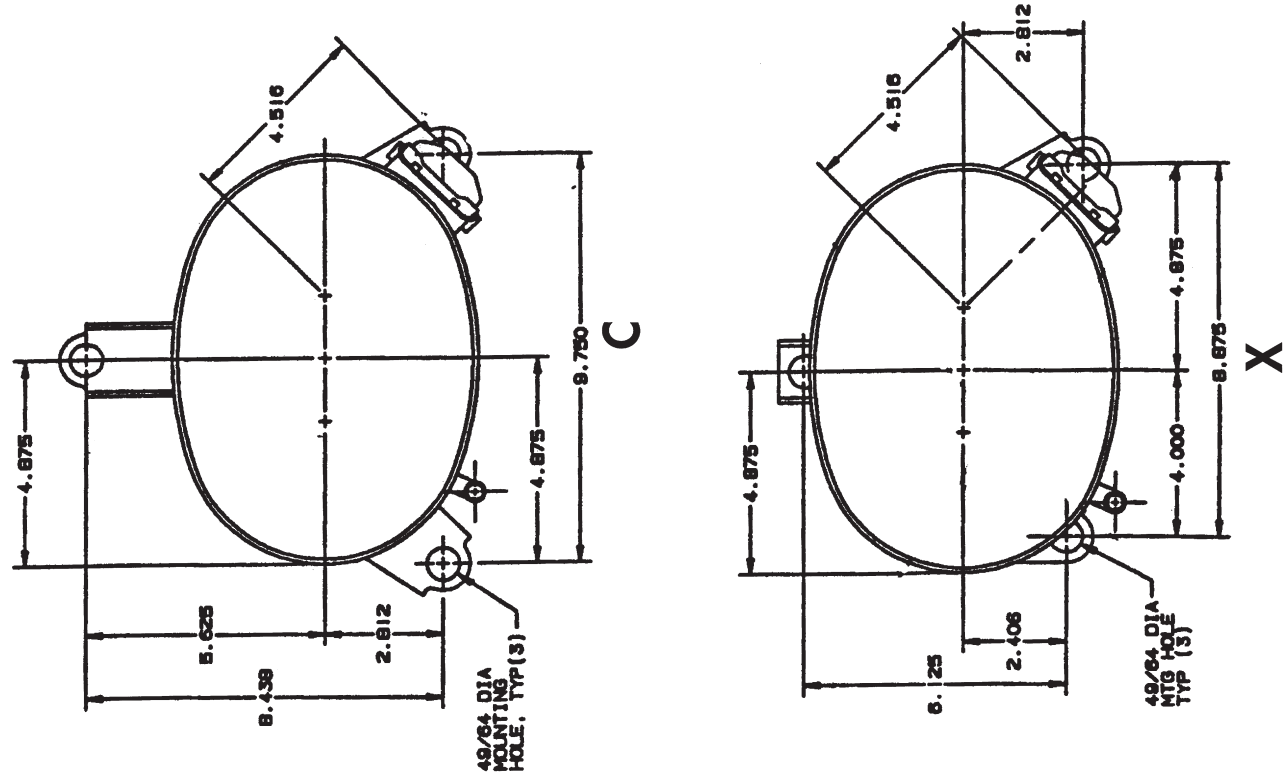
Generation B = Second Generation- No PRV (Except G series) 2 = Third Generation - Basic Standard Model
 D = Dual Compressor Application (Single & Interconnected) 3 = Fourth Generation - Basic Standard Model
 E = High Efficiency 4 = Basic Standard Model - Improved Sound
 M = Alternate Pressure Relief Valve 5 = Inertia Series - Standard Model
 N = No Pressure Relief Valve (Except G series) 6 = Inertia Series - Hi Efficiency Model
 O = Basic Standard Model 7 = Inertia Series - Second Generation Hi Efficiency Model
 P = Basic Standard Model- Upgrade Plus 8 = Fifth Generation- Basic Standard Model Upgrade
 T = Second Generation - Basic Standard Model 9 = Sixth Generation- Basic Standard Model Upgrade

Type of Refrigerant 1 = R12 5 = R502 or Alt. Replacement Refrigerant SUVA-HP-81 (Refrigerant R402B)
 2 = R22 6 = R404A (SUVA HP62)
 4 = R134a 7 = R407C (SUVA AC9000 or KLEA 66) 8 = R410A

Refrigeration Application H = High Temperature S = High Temperature (One Capacity / 1,2,3, or 4 cylinder) Half/Single
 M = Medium Temperature T = High Temperature (Two Capacities / 2 or 4 cylinder)- Twin/Single
 L = Low Temperature



MOUNTING FEET CONFIGURATION



H23A SERIES

50 HZ

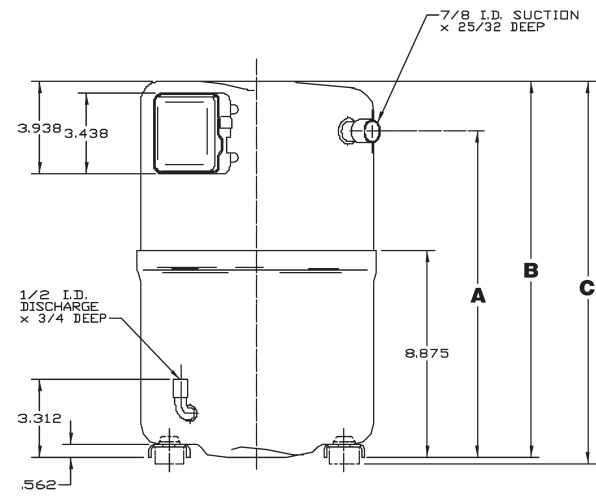
Model	@45/130				@45/100			@45/110			Electrical Data RLA LRA MCC			Displacement IN ³ /REV CM ³ /REV			
	Capacity BTU/H WATTS		Motor Input WATTS	EER/COP BTU/WH W/W		Capacity BTU/H	Motor Input WATTS	EER BTU/WH	Capacity BTU/H	Motor Input WATTS						EER BTU/WH	
	BTU/H	WATTS	BTU/WH	W/W	BTU/H	WATTS	BTU/WH	BTU/H	WATTS	BTU/WH	BTU/H	WATTS	BTU/WH	RLA	LRA	MCC	IN ³ /REV
220/240 VOLTS - 1 Phase																	
H23A263ABH	21800	6397	2170	10.0	2.9	29684	1763	16.8	26611	1879	14.2	10.6	62	18.0	3.01	49.30	
H23A283ABK	22250	6529	2240	9.9	2.9	30323	1878	16.1	27395	1980	13.8	11.0	62	20.0	3.16	51.76	
H23A303ABH	24000	7042	2430	9.9	2.9	32068	1988	16.1	29247	2134	13.7	11.4	62	20.0	3.28	53.73	
H23A323ABH	26100	7658	2640	9.9	2.9	34493	2157	16.0	31378	2301	13.6	12.5	72	22.0	3.52	57.66	
H23A353ABH	28590	8389	2920	9.8	2.9	37413	2402	15.6	34221	2556	13.4	13.8	78	24.0	3.78	61.92	
H23A383ABK	32400	9507	3220	10.1	3.0	41961	2644	15.9	38583	2820	13.7	15.5	82	28.0	4.05	66.34	
H23A423ABK	35000	10270	3420	10.2	3.0	44757	2810	15.9	41400	3000	13.8	17.0	90	28.0	4.43	72.56	
H23A463ABK	39400	11561	3745	10.5	3.1	50071	2991	16.7	46420	3265	14.2	18.8	100	33.0	4.75	77.81	
230/208 VOLTS - 1 Phase																	
H23A263ABJ	21850	6411	2185	10.0	2.9	29817	1771	16.8	26724	1887	14.2	10.7	62	18.0	3.01	49.30	
H23A353ABJ	29480	8650	2830	10.4	3.1	38503	2327	16.5	35370	2470	14.3	13.9	84	23.0	3.78	61.92	
H23A383ABJ	32230	9457	3080	10.5	3.1	41833	2499	16.7	38250	2690	14.2	16.2	107	31.7	4.05	66.34	
220/200 VOLTS - 3 Phase																	
H23A263DBL	21770	6388	2140	10.2	3.0	29701	1739	17.1	26626	1853	14.4	7.0	55	14.0	3.01	49.30	
H23A303DBL	24200	7101	2400	10.1	3.0	32357	1964	16.5	29511	2109	14.0	9.0	76	16.0	3.28	53.73	
H23A323DBL	26800	7864	2650	10.1	3.0	35419	2137	16.6	32224	2290	14.1	9.4	76	16.0	3.52	57.66	
H23A353DBL	28950	8495	2880	10.1	2.9	37678	2340	16.1	34660	2503	13.8	10.0	76	18.0	3.78	61.92	
H23A383DBL	32000	9389	3140	10.2	3.0	41440	2544	16.3	38107	2724	14.0	10.7	76	20.0	4.05	66.34	
H23A423DBL	35500	10416	3390	10.5	3.1	45414	2754	16.5	42012	2951	14.2	11.2	78	20.0	4.43	72.56	
H23A463DBL	39700	11649	3850	10.3	3.0	50179	3173	15.8	46746	3434	13.6	12.7	90	24.0	4.75	77.81	
H23A503DBL	42380	12435	4310	9.8	2.9	55352	3506	15.8	51199	3819	13.4	14.7	106	25.0	5.17	84.68	
H23A543DBL	46500	13644	4580	10.2	3.0	59658	3808	15.7	54930	4131	13.3	15.1	106	25.0	5.55	90.91	
H23A563DBL	47500	13938	4640	10.2	3.0	60910	3839	15.9	56412	4237	13.3	16.0	124	30.0	5.66	92.71	
H23A623DBL	52300	15346	5100	10.3	3.0	67283	4247	15.8	61187	4568	13.4	18.0	124	32.0	6.17	101.06	
380/415 VOLTS - 3 Phase																	
H23A263DBE	21615	6342	2220	9.7	2.9	29481	1801	16.4	26421	1919	13.8	3.8	30	8.0	3.01	49.30	
H23A303DBE	23900	7013	2340	10.2	3.0	32065	1910	16.8	29390	2086	14.1	4.1	30	8.0	3.28	53.73	
H23A323DBE	26770	7855	2580	10.4	3.0	32065	1910	16.8	29390	2086	14.1	4.3	30	8.0	3.52	57.66	
H23A353DBE	28960	8497	2820	10.3	3.0	37678	2292	16.4	34660	2451	14.1	5.0	35	8.3	3.78	61.92	
H23A383DBE	31410	9216	3050	10.3	3.0	40665	2471	16.5	37392	2646	14.1	5.2	39	9.5	4.05	66.34	
H23A423DBE	35200	10328	3430	10.3	3.0	45031	2786	16.2	41655	2987	13.9	5.8	39	9.5	4.43	72.56	
H23A463DBE	39000	11443	3820	10.2	3.0	49287	3152	15.6	45925	3430	13.4	6.3	45	13.0	4.75	77.81	
H23A503DBE	42200	12382	4210	10.0	2.9	55090	3423	16.1	50956	3728	13.7	6.6	53	12.5	5.17	84.68	
H23A543DBE	45925	13475	4440	10.3	3.0	58889	3684	16.0	54226	3995	13.6	7.2	53	12.5	5.55	90.91	
H23A563DBE	47500	13938	4560	10.4	3.1	60910	3769	16.2	56412	4162	13.6	7.5	62	14.0	5.66	92.71	
H23A583DBE	49200	14400	4650	10.6	3.1	62900	3736	16.9	58400	4022	14.5	7.7	62	15.0	5.92	97.06	
H23A623DBE	51800	15199	5000	10.4	3.0	66639	4164	16.0	60608	4477	13.5	8.2	62	16.0	6.17	101.06	
500 VOLTS - 3 Phase																	
H23A383DBF	31680	9296	3095	10.2	3.0	41033	2515	16.3	37730	2690	14.0	4.2	36	8.0	4.05	66.34	
H23A423DBF	35200	10328	3430	10.3	3.0	45008	2804	16.1	41655	2987	13.9	4.6	36	8.0	4.43	72.56	
H23A463DBF	39000	11443	3820	10.2	3.0	49289	3152	15.6	45925	3430	13.4	4.9	36	10.0	4.75	77.81	
H23A503DBF	42200	12382	4210	10.0	2.9	55090	3423	16.1	50956	3728	13.7	5.4	43	9.0	5.17	84.68	
H23A543DBF	45900	13468	4440	10.3	3.0	58889	3684	16.0	54226	3995	13.6	5.7	43	10.0	5.55	90.91	
H23A563DBF	47500	13938	4560	10.4	3.1	60910	3769	16.2	56412	4162	13.6	6.1	50	12.0	5.66	92.71	
H23A623DBF	51800	15199	5000	10.4	3.0	66639	4164	16.0	60608	4477	13.5	6.5	50	13.0	6.17	101.06	

*Data Subject to Revision

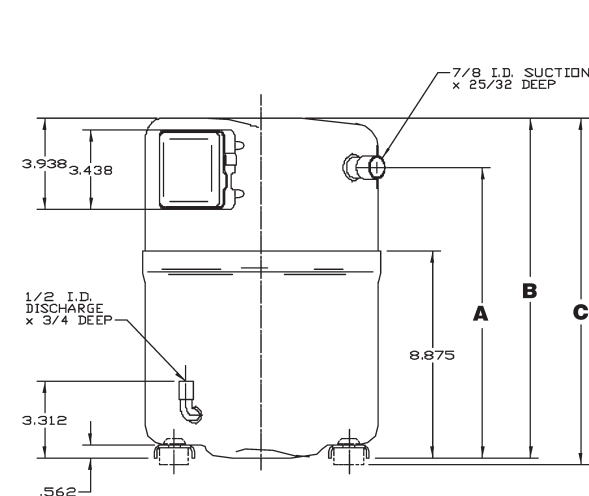
H23A SERIES

50 HZ

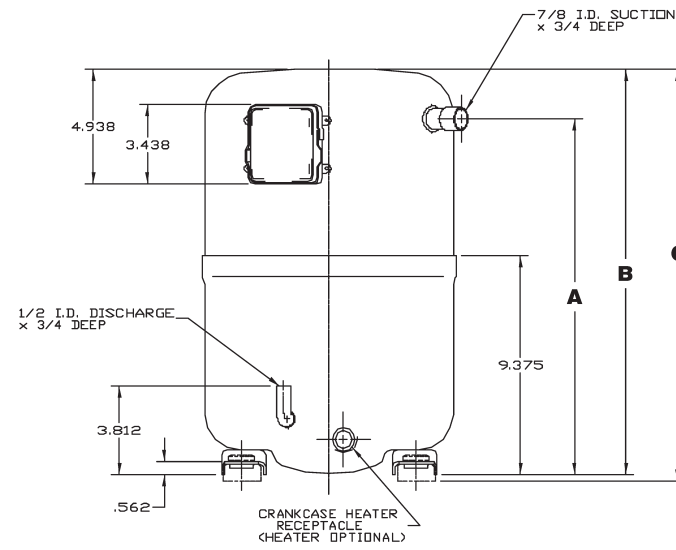
Model	Oil Charge OZ L		Weight Net Ship Lbs Kg Lbs Kg				ELECTRICAL START COMPONENTS			DIMENSIONS *DIAGRAMS FOUND ON PAGE 66					
							Run Capacitor MFD/VOLTS	Start Capacitor MFD/VOLTS	G.E. Relay	A		B		C	
	IN	MM	IN	MM	IN	MM	IN	MM							
220/240 VOLTS - 1 Phase															
H23A263ABH	50	1.5	71.5	32.5	76.0	34.5	35/370	145-175/250	3ARR3*10AS*	12.5	317.2	14.6	371.3	14.9	378.4
H23A283ABK	50	1.5	71.5	32.5	76.0	34.5	35/370	145-175/250	3ARR3*10AS*	12.5	317.2	14.6	371.3	14.9	378.4
H23A303ABH	50	1.5	73.5	33.4	78.0	35.5	35/370	145-175/250	3ARR3*10AS*	12.5	317.2	14.6	371.3	14.9	378.4
H23A323ABH	50	1.5	73.5	33.4	78.0	35.5	40/370	145-175/250	3ARR3*10AT*	12.5	317.2	14.6	371.3	14.9	378.4
H23A353ABH	50	1.5	74.0	33.6	78.5	35.7	35/370	145-175/250	3ARR3*25AV*	12.5	317.2	14.6	371.3	14.9	378.4
H23A383ABK	50	1.5	78.0	35.5	82.5	37.5	35/440	145-175/330	3ARR3*4AA*	12.5	317.2	14.6	371.3	14.9	378.4
H23A423ABK	50	1.5	78.0	35.5	82.5	37.5	40/440	145-175/330	3ARR3*27AA*	12.5	317.2	14.6	371.3	14.9	378.4
H23A463ABK	55	1.6	85.0	38.6	89.5	40.7	40/440	145-175/330	3ARR3*4AA*	12.5	317.2	14.6	371.3	14.9	378.4
230/208 VOLTS - 1 Phase															
H23A263ABJ	50	1.5	71.5	32.5	76.0	34.5	35/370	145-175/220	3ARR3*10AS*	12.5	317.2	14.6	371.3	14.9	378.4
H23A353ABJ	50	1.5	85.0	38.6	89.5	40.7	35/440	145-175/330	3ARR3*4A*	12.5	317.2	14.6	371.3	14.9	378.4
H23A383ABJ	50	1.5	86.0	39.1	90.5	41.1	40/440	145-175/250	3ARR3*6AS*	12.5	317.2	14.6	371.3	14.9	378.4
220/200 VOLTS - 3 Phase															
H23A263DBL	50	1.5	72.0	32.7	76.5	34.8	-Not Req'd	-Not Req'd	-Not Req'd	12.5	317.2	14.6	371.3	14.9	378.4
H23A303DBL	50	1.5	73.0	33.2	77.5	35.2	-Not Req'd	-Not Req'd	-Not Req'd	12.5	317.2	14.6	371.3	14.9	378.4
H23A323DBL	50	1.5	73.0	33.2	77.5	35.2	-Not Req'd	-Not Req'd	-Not Req'd	12.5	317.2	14.6	371.3	14.9	378.4
H23A353DBL	50	1.5	73.0	33.2	77.5	35.2	-Not Req'd	-Not Req'd	-Not Req'd	12.5	317.2	14.6	371.3	14.9	378.4
H23A383DBL	50	1.5	74.0	33.6	78.5	35.7	-Not Req'd	-Not Req'd	-Not Req'd	12.5	317.2	14.6	371.3	14.9	378.4
H23A463DBL	50	1.5	74.0	33.6	78.5	35.7	-Not Req'd	-Not Req'd	-Not Req'd	12.5	317.2	14.6	371.3	14.9	378.4
H23A463DBL	55	1.6	74.0	33.6	78.5	35.7	-Not Req'd	-Not Req'd	-Not Req'd	12.5	317.2	14.6	371.3	14.9	378.4
H23A503DBL	55	1.6	79.5	36.1	84.0	38.2	-Not Req'd	-Not Req'd	-Not Req'd	14.0	355.3	16.1	409.4	16.4	416.5
H23A543DBL	55	1.6	79.5	36.1	84.0	38.2	-Not Req'd	-Not Req'd	-Not Req'd	14.0	355.3	16.1	409.4	16.4	416.5
H23A563DBL	55	1.6	83.0	37.7	87.5	39.8	-Not Req'd	-Not Req'd	-Not Req'd	14.0	355.3	16.1	409.4	16.4	416.5
H23A623DBL	55	1.6	83.0	37.7	87.5	39.8	-Not Req'd	-Not Req'd	-Not Req'd	14.0	355.3	16.1	409.4	16.4	416.5
380/415 VOLTS - 3 Phase															
H23A263DBE	50	1.5	72.0	32.7	76.5	34.8	-Not Req'd	-Not Req'd	-Not Req'd	12.5	317.2	14.6	371.3	14.9	378.4
H23A303DBE	50	1.5	72.0	32.7	76.5	34.8	-Not Req'd	-Not Req'd	-Not Req'd	12.5	317.2	14.6	371.3	14.9	378.4
H23A323DBE	50	1.5	73.0	33.2	77.5	35.2	-Not Req'd	-Not Req'd	-Not Req'd	12.5	317.2	14.6	371.3	14.9	378.4
H23A353DBE	50	1.5	73.0	33.2	77.5	35.2	-Not Req'd	-Not Req'd	-Not Req'd	12.5	317.2	14.6	371.3	14.9	378.4
H23A383DBE	50	1.5	74.0	33.6	78.5	35.7	-Not Req'd	-Not Req'd	-Not Req'd	12.5	317.2	14.6	371.3	14.9	378.4
H23A423DBE	50	1.5	74.0	33.6	78.5	35.7	-Not Req'd	-Not Req'd	-Not Req'd	12.5	31				



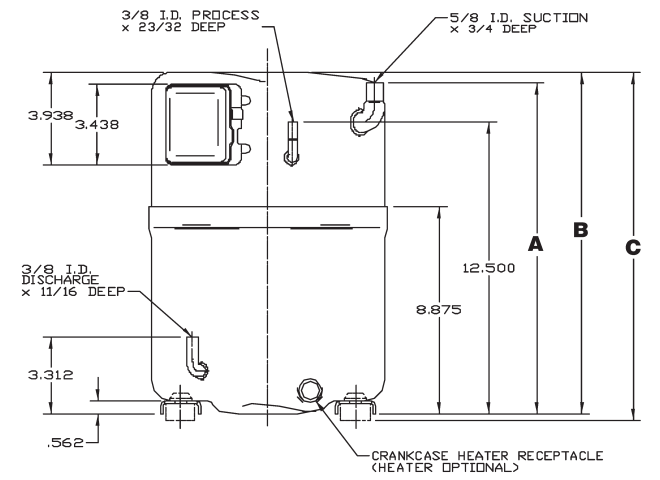
H23A



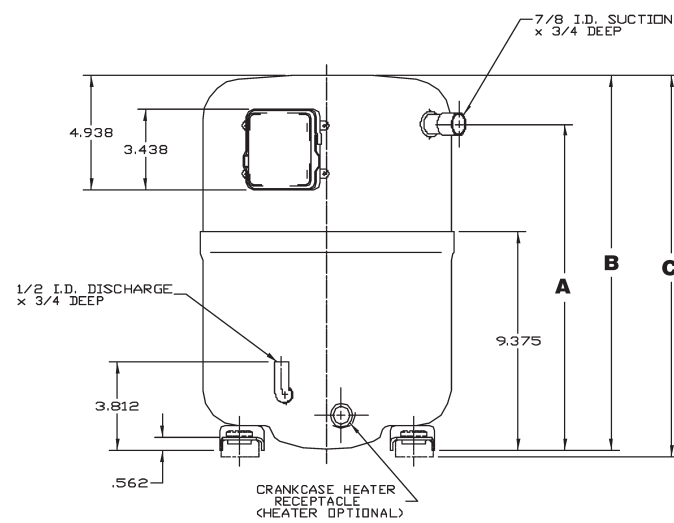
H24A



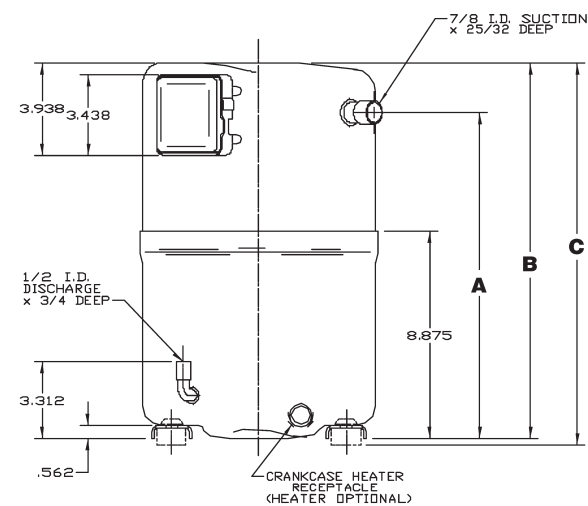
H29A & T29A



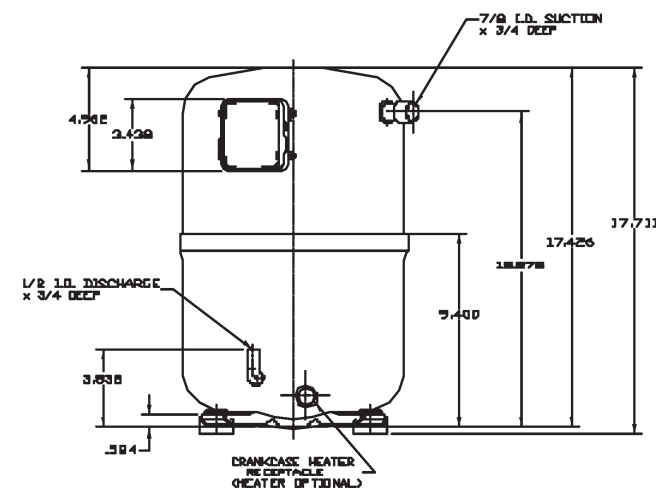
H73A



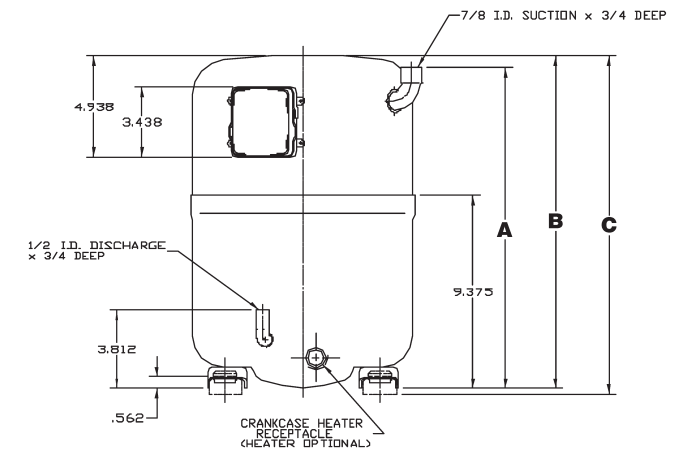
H25A, H26A, H27A



H28A & H78A



H89A



H79A