

COMPRESSOR MODEL NUMBER SYSTEM

H 2 9 B 18 U A B C A

Mounting Feet Dim A = 7.5 x 7.5 B = 4.8 x 8.0 C = 8.4 x 9.8 D = 6.12 x 8.0 E = 9.5 x 9.5
 F = 10.5 x 10.5 H = 7.5 x 21.5 J = 7.5 x 22.5 X = 8.8 x 6.1

Electrical Characteristics A = 115-1-60
 B = 230-1-60
 C = 230/208-1-60
 D = 230/208-3-60 (220/200-3-50)
 E = 460-3-60 (380/415-3-50)
 F = 575-3-60 (500-3-50)
 G = 200-1-60
 H = 265-1-60 (220/240-1-50)
 J = 230/208-1-50
 K = 220/240-1-50
 L = 230/200-3-60 (220/200-3-50)

Motor Protector B = Internal Line Break
 P = Pilot Duty - Solid State
 R = Pilot Duty - Solid State (2nd Generation)
 T = Pilot Duty - Internal Thermostat and External Sensing Elements

Motor Type A = PSC Permanent Split Capacitor
 B = CSR Capacitor Start/Cap. Run
 C = RSCR Resistance Start/Cap. Run
 D = AI 3 Phase-Across the Line
 E = CSIR Cap. Start/Induction Run

Capacity 183 = 18+3-0's = 18,000; 244 = 24+4-0's = 240,000 BTU/HR
 18U = 18+3-0's = 18,000 BTU/HR

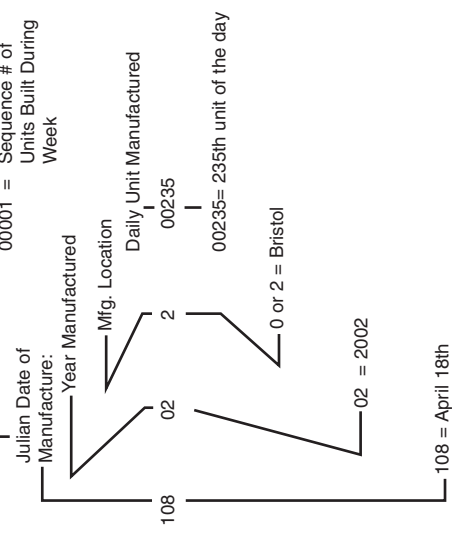
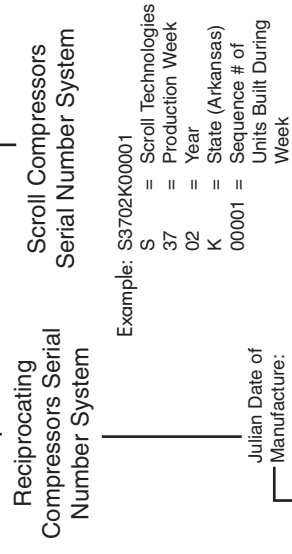
Family A = Model A Reciprocating
 B = Model B Reciprocating
 C = Scroll (≤42K)
 D = Dual Compressor Application
 G = Model G Reciprocating
 R = Scroll (>42K)

Generation B = Second Generation- No PRV (Except G series)
 D = Dual Compressor Application (Single & Interconnected)
 E = High Efficiency
 M = Alternate Pressure Relief Valve
 N = No Pressure Relief Valve (Except G series)
 O = Basic Standard Model
 P = Basic Standard Model- Upgrade Plus
 T = Second Generation - Basic Standard Model

Type of Refrigerant 1 = R12
 2 = R22
 4 = R134a

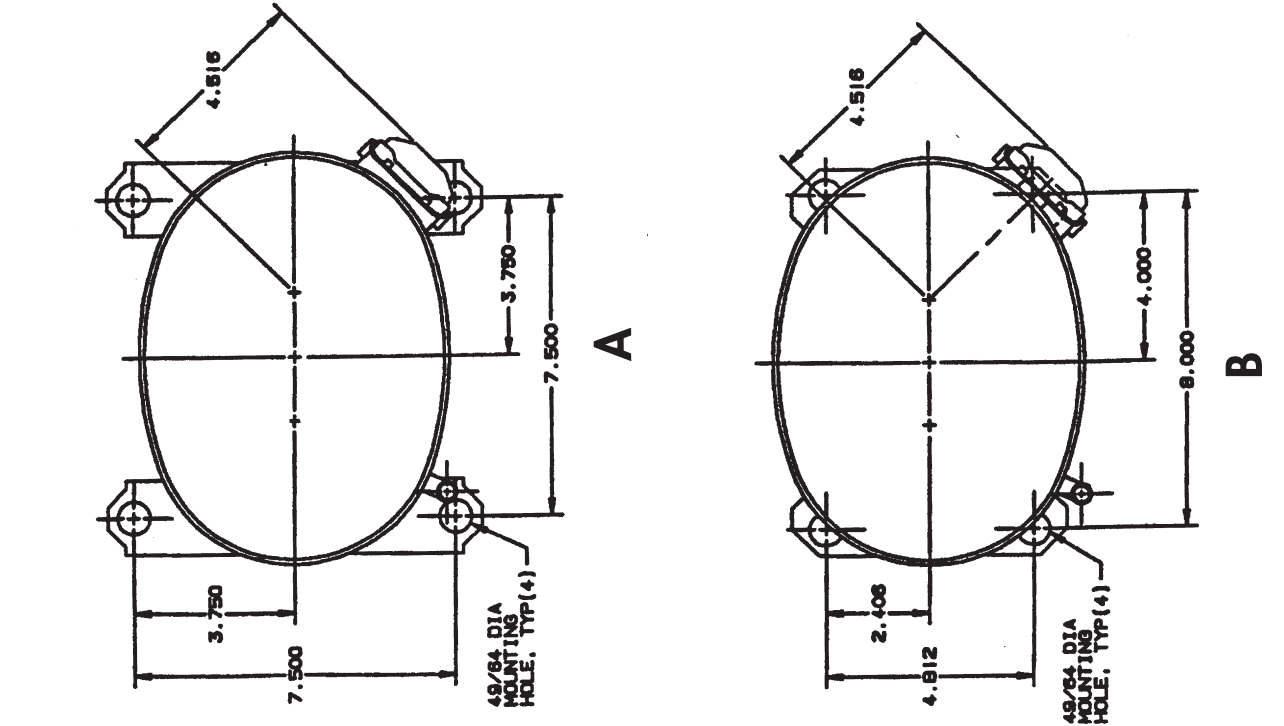
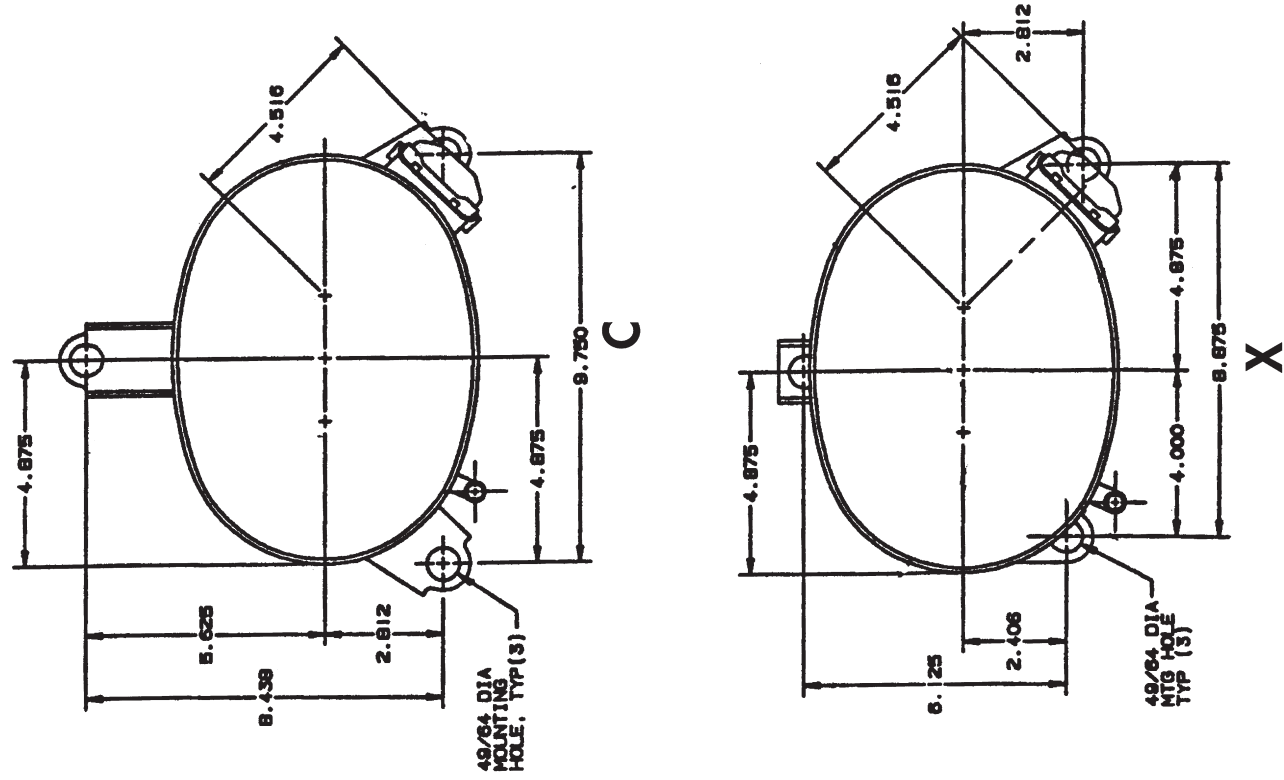
Refrigeration Application H = High Temperature
 M = Medium Temperature
 L = Low Temperature

Family



- F = PWS 3 Phase-Part Winding Start
- G = 3 Phase 2/4/Pole (2 Speed)
- J = 1 Phase 2/4 Pole (2 Speed)
- K = 3 Phase-Dual Voltage
- L = 3 Phase - WYE DELTA

MOUNTING FEET CONFIGURATION



H79B SERIES (R407C)

60 HZ

Model	@45/130				@45/100			@45/110			Electrical Data			Displacement		
	Capacity BTU/H WATTS	Motor Input WATTS	EER/COP		Capacity BTU/H	Motor Input WATTS	EER	Capacity BTU/H	Motor Input WATTS	EER	RLA	LRA	MCC	IN/REV	CM ³ /REV	
			BTU/WH	W/W												BTU/WH
380/415 VOLTS - 3 Phase																
H79B28UDEBE	20629	6053	2224	9.3	2.7	29004	1656	17.5	26392	1892	13.9	4.2	38	74.0	2.90	47.50

H79B SERIES (R407C)

50 HZ

220/240 VOLTS - 1 Phase																
H79B17UABH	12370	3630	1346	9.2	2.7	17991	1151	15.6	16073	1231	13.1	6.4	42	11.0	1.97	32.27
H79B18UABH	13096	3843	1293	10.1	3.0	18734	1088	17.2	16861	1174	14.4	6.7	42	12.0	2.03	33.25
H79B20UABH	14643	4297	1520	9.6	2.8	20973	1266	16.6	18875	1367	13.8	7.6	55	15.0	2.24	36.69
H79B22UABH	16592	4868	1682	9.9	2.9	23011	1373	16.8	20903	1485	14.1	8.4	55	15.0	2.44	39.97
H79B24UABK	17278	5070	1721	10.0	2.9	24327	1425	17.1	21942	1537	14.3	9.0	56	16.0	2.56	41.93
H79B26UABK	18892	5543	1866	10.1	3.0	26678	1554	17.2	24202	1690	14.3	9.6	58	18.0	2.76	45.21
H79B28UABK	20434	5996	2094	9.8	2.9	28502	1695	16.8	25893	1858	13.9	10.7	70	20.0	2.90	47.50
H79B30UABK	21905	6427	2218	9.9	2.9	30493	1792	17.0	27554	1964	14.0	11.6	76	21.0	3.08	50.45
H79B32UABK	23391	6863	2335	10.0	2.9	32415	1891	17.1	29447	2059	14.3	12.4	76	22.0	3.26	53.40
H79B33UABK	24251	7116	2396	10.1	3.0	33222	1924	17.3	30278	2102	14.4	13.0	76	23.0	3.34	54.71
H79B35UABK	26263	7706	2704	9.7	2.8	35113	2201	16.0	32145	2302	14.0	13.4	85	23.0	3.52	57.66
380/415 VOLTS - 3 Phase																
H79B22UDEBE	16447	4826	1663	9.9	2.9	23026	1355	17.0	20936	1461	14.3	3.3	30	6.0	2.44	39.97
H79B24UDEBE	17185	5042	1741	9.9	2.9	25018	1479	16.9	22592	1604	14.1	3.4	30	7.0	2.56	41.93
H79B26UDEBE	19204	5635	1978	9.7	2.8	26928	1593	16.9	24452	1742	14.0	4.1	38	7.0	2.76	45.21
H79B30UDEBE	22003	6456	2258	9.7	2.9	30540	1791	17.1	27692	1975	14.0	4.4	42	8.0	3.08	50.45
H79B32UDEBE	23297	6836	2385	9.8	2.9	33033	2096	15.8	29995	2243	13.4	4.7	42	8.0	3.26	53.40
H79B33UDEBE	24045	7055	2419	9.9	2.9	33264	1958	17.0	29972	2145	14.0	4.8	42	8.0	3.34	54.71
H79B35UDEBE	26008	7631	2729	9.5	2.8	36343	2161	16.8	32483	2302	14.1	5.0	42	9.0	3.52	57.66

H73BQ SERIES (R407C)

50 HZ

220/240 VOLTS - 1 Phase																
H73B17QABH	11500	3374	1290	8.9	2.6	16568	1054	15.7	14805	1143	13.0	6.8	40	13.0	1.84	30.14
H73B19QABK	12700	3726	1410	9.0	2.6	18018	1189	15.2	16218	1280	12.7	7.4	53	13.0	2.03	33.25
H73B20QABK	14400	4225	1520	9.5	2.8	20353	1250	16.3	18316	1352	13.5	8.0	53	14.0	2.18	35.71
H73B22QABH	16000	4695	1690	9.5	2.8	22911	1383	16.6	20588	1503	13.7	9.2	53	16.0	2.44	39.97
H73B24QABK	17800	5223	1890	9.4	2.8	23949	1571	15.2	21852	1698	12.9	9.7	55	17.0	2.61	42.75
H73B26QABK	19500	5722	2070	9.4	2.8	26422	1684	15.7	24269	1835	13.2	11.3	65	18.0	2.82	46.19
H73B28QABH	21000	6162	2180	9.6	2.8	28315	1770	16.0	25836	1924	13.4	12.0	65	20.0	2.97	48.65
H73B30QABK	22300	6543	2380	9.4	2.7	30220	1949	15.5	27581	2108	13.1	12.4	68	20.0	3.15	51.60
H73B32QABK	24400	7159	2550	9.6	2.8	32529	2118	15.4	29845	2287	13.0	14.0	91	23.0	3.34	54.71
H73B35QABK	25200	7394	2640	9.5	2.8	33034	2144	15.4	30213	2318	13.0	15.2	95	26.0	3.46	56.67
380/415 VOLTS - 3 Phase																
H73B20QDBE	14000	4108	1480	9.5	2.8	19580	1203	16.3	17620	1302	13.5	3.2	24	6.0	2.18	35.71
H73B22QDBE	15500	4548	1650	9.4	2.8	22040	1331	16.6	19806	1447	13.7	3.4	24	6.0	2.44	39.97
H73B24QDBE	17300	5076	1840	9.4	2.8	24007	1474	16.3	21687	1619	13.4	3.6	30	6.0	2.61	42.75
H73B28QDBE	20300	5956	2120	9.6	2.8	27239	1704	16.0	24854	1853	13.4	4.0	30	8.0	2.97	48.65
H73B30QDBE	21600	6338	2320	9.3	2.7	29071	1877	15.5	26533	2030	13.1	4.6	34	8.0	3.15	51.60
H73B32QDBE	23600	6925	2490	9.5	2.8	31293	2040	15.3	28711	2202	13.0	4.9	34	9.0	3.34	54.71
H73B35QDBE	24400	7159	2580	9.5	2.8	21779	2065	10.5	29065	2232	13.0	4.9	38	9.0	3.46	56.67

H79B SERIES (R407C)

60 HZ

Model	Oil Charge OZ L	Weight				ELECTRICAL START COMPONENTS			DIMENSIONS						
		Net		Ship		Run Capacitor MFD/VOLTS	Start Capacitor MFD/VOLTS	G.E. Relay	*DIAGRAMS FOUND ON PAGE 36						
		Lbs	Kg	Lbs	Kg				A	B	C	IN	MM	IN	MM
220/240 VOLTS - 3 Phase															
H79B28UDEBE	35	1.0	63.0	28.6	66.5	30.2	-Not Req'd	-Not Req'd	-Not Req'd	13.3	336.8	13.8	349.0	14.0	356.1

H79B SERIES (R407C)

50 HZ

220/240 VOLTS - 1 Phase															
H79B17UABH	35	1.0	61.5	28.0	64.0	29.1	30/370	145-175/250	3ARR3*10S*	12.8	324.1	13.2	336.3	13.5	343.4
H79B18UABH	35	1.0	61.5	28.0	64.0	29.1	30/370	145-175/250	3ARR3*10S*	12.8	324.1	13.2	336.3	13.5	343.4
H79B20UABH	35	1.0	65.0	29.5	68.5	31.1	30/370	145-175/250	3ARR3*10U*	13.3	336.8	13.8	349.0	14.0	356.1
H79B22UABH	35	1.0	65.0	29.5	68.5	31.1	35/370	145-175/250	3ARR3*10U*	13.3	336.8	13.8	349.0	14.0	356.1
H79B24UABK	35	1.0	67.0	30.5	70.5	32.0	35/370	145-175/250	3ARR3*10S*	13.3	336.8	13.8	349.0	14.0	356.1
H79B26UABK	35	1.0	67.0	30.5	70.5	32.0	40/370	145-175/250	3ARR3*10S*	13.3	336.8	13.8	349.0	14.0	356.1
H79B28UABK	35	1.0	67.0	30.5	70.5	32.0	40/370	145-175/250	3ARR3*3L*	13.3	336.8	13.8	349.0	14.0	356.1
H79B30UABK	35	1.0	69.5	31.6	73.0	33.2	40/370	145-175/250	3ARR3*10S*	13.8	349.5	14.2	361.7	14.5	368.8
H79B32UABK	35	1.0	69.5	31.6	73.0	33.2	40/370	145-175/250	3ARR3*10S*	13.8	349.5	14.2	361.7	14.5	368.8
H79B33UABK	35	1.0	69.5	31.6	73.0	33.2	40/370	145-175/250	3ARR3*10S*	13.8	349.5	14.2	361.7	14.5	368.8
H79B35UABK	35	1.0	71.5	32.5	75.0	34.1	45/370	145-175/250	3ARR3*10S*	13.8	349.5	14.2	361.7	14.5	368.8
380/415 VOLTS - 3 Phase															
H79B22UDEBE	35	1.0	60.5	27.5	64.0	29.1	-Not Req'd	-Not Req'd	-Not Req'd	12.8	324.1	13.2	336.3	13.5	343.4
H79B24UDEBE	35	1.0	61.0	27.7	64.5	29.3	-Not Req'd	-Not Req'd	-Not Req'd	13.3	336.8	13.8	349.0	14.0	356.1
H79B26UDEBE	35	1.0	63.0	28.6	66.5	30.2	-Not Req'd	-Not Req'd	-Not Req'd	13.3	336.8	13.8	349.0	14.0	356.1
H79B30UDEBE	35	1.0	67.5	30.7	71.0	32.3	-Not Req'd	-Not Req'd	-Not Req'd	14.0	354.9	14.2	361.7	14.5	368.8
H79B32UDEBE	35	1.0	67.5	30.7	71.0	32.3	-Not Req'd	-Not Req'd	-Not Req'd	13.8	349.5	14.2	361.7	14.5	368.8
H79B33UDEBE	35	1.0	67.5	30.7	71.0	32.3	-Not Req'd	-Not Req'd	-Not Req'd	13.8	349.5	14.2	361.7	14.5	368.8
H79B35UDEBE	40	1.2	67.5	30.7	71.0	32.3	-Not Req'd	-Not Req'd	-Not Req'd	13.8	349.5	14.2	361.7	14.5	368.8

H73BQ SERIES (R407C)

50 HZ

220/240 VOLTS - 1 Phase															
H73B17QABH	40	1.2	60.0	27.3	63.5	28.9	30/370	88-108/250	3ARR3*25AS*	12.2	310.4	12.7	321.1	12.9	327.7
H73B19QABK	40	1.2	62.5	28.4	66.0	30.0	30/370	88-108/250	3ARR3*10AS*	12.8	324.1	13.2	336.3	13.5	343.4
H73B20QABK	40	1.2	63.0	28.6	66.5	30.2	30/370	88-108/250	3ARR3*25AS*	12.8	324.1	13.2	336.3	13.5	343.4
H73B22QABH	40	1.2	62.5	28.4	66.0	30.0	30/370	88-108/250	3ARR3*25AS*	12.8	324.1	13.2	336.3	13.5	343.4
H73B24QABK	40	1.2	62.0	28.2	66.5	30.2	35/440	88-108/250	3ARR3*10AS*	12.8	324.1	13.2	336.3	13.5	343.4
H73B26QABK	40	1.2	64.7	29.4	68.2	31.0	35/370	88-108/250	3ARR3*24AP*	12.8	324.1	13.2	336.3	13.5	343.4
H73B28QABH	40	1.2	64.8	29.5	68.3	31.0	35/370	88-108/250	3ARR3*24AP*	13.0	329.4	13.2	336.3	13.5	343.4
H73B30QABK	40	1.2	64.5	29.3	68.0	30.9	45/440	88-108/250	3ARR3*25AS*	13.0	329.4	13.2	336.3	13.5	343.4
H73B32QABK	40	1.2	69.5	31.6	73.0	33.2	45/440	88-108/250	3ARR3*25AS*	13.9	351.8	14.1	358.6	14.4	365.7
H73B35QABK	40	1.2	71.0	32.3	74.5	33.9	50/440	88-108/250	3ARR3*24R*	13.9	351.8	14.1	358.6	14.4	365.7
380/415 VOLTS - 3 Phase															
H73B20QDBE	40	1.2													

H89B SERIES (R410A)

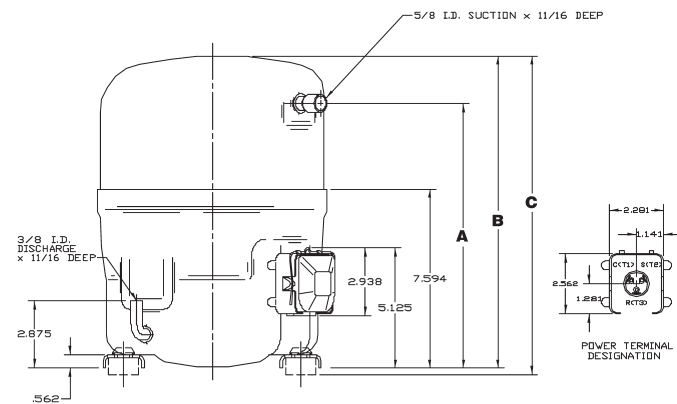
50 HZ

Model	@45/130				@45/100				@45/110				Electrical Data			Displacement	
	Capacity		Motor Input		Capacity		Motor Input		Capacity		Motor Input						
	BTU/H	WATTS	BTU/WH	W/W	BTU/H	WATTS	BTU/WH	W/W	BTU/H	WATTS	BTU/WH	W/W	RLA	LRA	MCC	IN ³ /REV	CM ³ /REV
220/200 VOLTS - 3 Phase																	
H89B183DBL	14900	4372	1610	9.3	2.7	22100	1310	16.9	19680	1439	13.7	6.5	60	11.0	1.56	25.47	
H89B243DBL	20675	6066	2225	9.3	2.7	29300	1715	17.1	26400	1915	13.8	7.7	60	13.0	1.91	31.29	
H89B283DBL	24650	7233	2590	9.5	2.8	33900	1985	17.1	31050	2180	14.2	9.7	82	16.0	2.18	35.71	
220/240 VOLTS - 1 Phase																	
H89B223ABH	18570	5449	1970	9.4	2.8	26540	1530	17.3	24020	1690	14.2	9.1	58	15.0	1.82	29.81	
H89B323ABH	27300	8010	2880	9.5	2.8	37375	2210	16.9	33950	2448	13.9	13.9	85	23.5	2.40	39.37	
H89B343ABH	29100	8538	3040	9.6	2.8	39500	2310	17.1	36000	2560	14.1	15.1	85	25.5	2.53	41.45	
380/415 VOLTS - 3 Phase																	
H89B183DBV	14900	4372	1610	9.3	2.7	22100	1310	16.9	19680	1439	13.7	6.5	60	11.0	1.56	25.47	
H89B203DBV	16800	4929	1775	9.5	2.8	24425	1385	17.6	22073	1533	14.4	3.3	31	5.7	1.68	27.55	
H89B243DBV	20675	6066	2225	9.3	2.7	29300	1715	17.1	26400	1915	13.8	3.8	31	6.5	1.91	31.29	
H89B283DBV	24650	7233	2590	9.5	2.8	33900	1985	17.1	31050	2180	14.2	4.3	42	8.0	2.18	35.71	
H89B303DBV	26300	7717	2760	9.5	2.8	35800	2100	17.0	32700	2300	14.2	4.7	42	8.4	2.30	37.63	
H89B343DBV	29125	8546	3070	9.5	2.8	39850	2350	17.0	36200	2610	13.9	5.4	42	9.5	2.53	41.45	
H89B363DBV	30430	8928	3190	9.5	2.8	41060	2430	16.9	37650	2671	14.1	5.8	42	9.5	2.62	42.92	

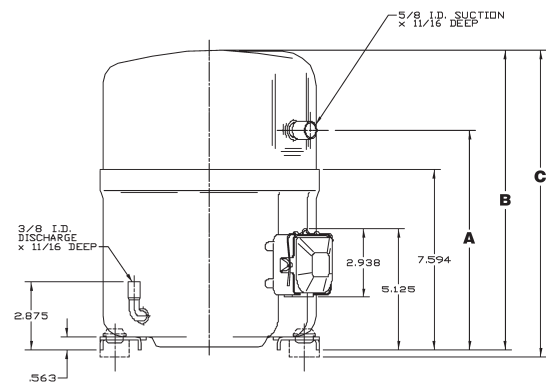
*Data Subject to Revision

B FAMILY

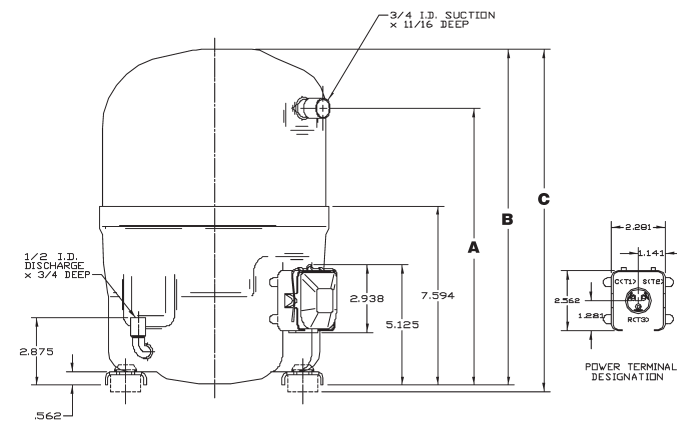
Diagrams



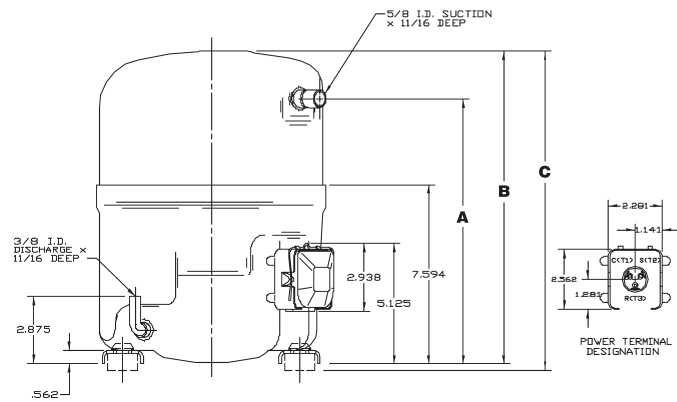
H23 & H73B



H24B



H25B, H26B, H27B



H29B & H79B

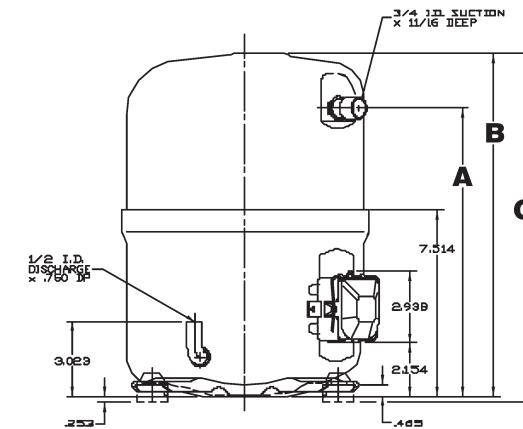
H89B SERIES (R410A)

50 HZ

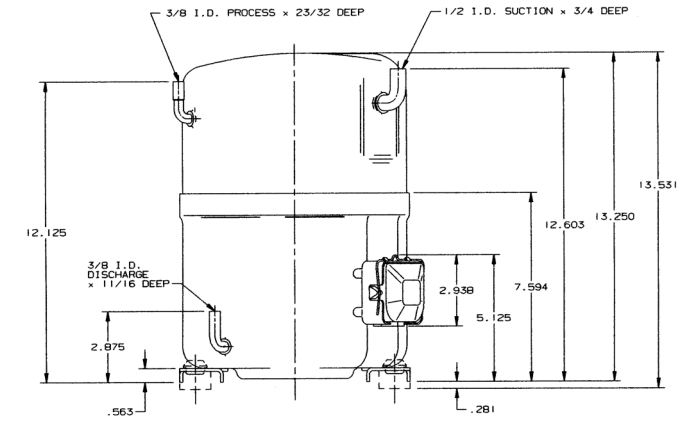
Model	Oil Charge		Weight				ELECTRICAL START COMPONENTS			DIMENSIONS						
							Run Capacitor	Start Capacitor	G.E. Relay	*DIAGRAMS FOUND ON PAGE 36						
	OZ	L	Lbs	Net Kg	Ship Lbs	Kg	MFD/VOLTS	MFD/VOLTS	Relay	A IN	MM	B IN	MM	C IN	MM	
220/200 VOLTS - 3 Phase																
H89B183DBL	40	1.2	67.0	30.5	70.0	31.8	-Not Req'd	-Not Req'd	-Not Req'd	11.1	282.6	13.3	338.4	13.6	344.8	
H89B243DBL	40	1.2	67.0	30.5	70.0	31.8	-Not Req'd	-Not Req'd	-Not Req'd	11.6	295.3	13.8	351.1	14.1	357.5	
H89B283DBL	40	1.2	73.5	33.4	76.5	34.8	-Not Req'd	-Not Req'd	-Not Req'd	11.6	295.3	13.8	351.1	14.1	357.5	
220/240 VOLTS - 1 Phase																
H89B223ABH	40	1.2	72.0	32.7	77.1	35.0	40/370	161-193/250	3ARR3*10AS*	11.6	295.4	13.8	351.3	14.1	357.6	
H89B323ABH	40	1.2	76.0	34.6	79.0	35.9	45/370	270-324/250	3ARR3*10AU*	12.1	308.0	14.3	363.8	14.6	370.1	
H89B343ABH	40	1.2	77.5	35.3	82.6	37.6	45/370	270-324/250	3ARR3*10AU*	12.1	308.0	14.3	363.8	14.6	370.1	
380/415 VOLTS - 3 Phase																
H89B183DBV	40	1.2	67.0	30.5	70.0	31.8	-Not Req'd	-Not Req'd	-Not Req'd	11.1	282.6	13.3	338.4	13.6	344.8	
H89B203DBV	40	1.2	67.0	30.5	70.0	31.8	-Not Req'd	-Not Req'd	-Not Req'd	11.1	282.6	13.3	338.4	13.6	344.8	
H89B243DBV	40	1.2	67.0	30.5	70.0	31.8	-Not Req'd	-Not Req'd	-Not Req'd	11.6	295.3	13.8	351.1	14.1	357.5	
H89B283DBV	40	1.2	73.5	33.4	76.5	34.8	-Not Req'd	-Not Req'd	-Not Req'd	11.6	295.3	13.8	351.1	14.1	357.5	
H89B303DBV	40	1.2	73.5	33.4	76.5	34.8	-Not Req'd	-Not Req'd	-Not Req'd	12.1	308.0	14.3	363.8	14.6	370.1	
H89B343DBV	40	1.2	73.5	33.4	76.5	34.8	-Not Req'd	-Not Req'd	-Not Req'd	12.1	308.0	14.3	363.8	14.6	370.1	
H89B363DBV	40	1.2	73.5	33.4	76.5	34.8	-Not Req'd	-Not Req'd	-Not Req'd	12.1	308.0	14.3	363.8	14.6	370.1	

B FAMILY

Diagrams



H89B



H2EB